

Dear _____

Thank you for your signature on the recent petition and the accompanying letter expressing concerns about the proposed junior pump track in Marsden Park. We appreciate your dedication to our community and the thoughtful consideration you have given to this matter.

In line with Pendle Borough Council's Corporate Plan, our ambitions are to engage and support communities, foster community pride, and promote a safer, greener environment. One of the primary objectives for this year is to promote healthy communities by protecting our parks, taking pride in our green spaces, and developing sustainable leisure activities that enhance health and well-being.

Marsden Park is a cherished space, regularly used for various forms of exercise, relaxation, and social interaction. The park's natural beauty, including its woodland and formal garden areas, offers significant mental health benefits, such as inducing relaxation, reducing stress, and providing a venue for social interaction. We acknowledge the importance of preserving these qualities and the diverse wildlife that inhabits the park.

We understand the concerns about the potential negative impacts of placing the junior pump track in the middle of the woodland area. These include the disruption of the peaceful environment, the threat to wildlife, and safety concerns for pedestrians. Additionally, issues related to emergency vehicle access, potential parking issues, and unsupervised use of the track have been raised.

We believe that with proper planning and community engagement, it is possible to address a number of these concerns effectively. The proposed junior pump track aims to promote healthy outdoor activities, offering a safe and structured environment for children and young people to enjoy cycling. This aligns with our goal to enhance community health and well-being.

Included with this letter is a question-and-answer sheet regarding the points raised on the petition. I hope this information will go some way to addressing your concerns.

Thank you once again for your involvement and dedication to the betterment of our community.

Yours sincerely,

Pendle Borough Council

FAQs

The pump track could be detrimental to park users who seek tranquillity and relaxation.
--

The proposed location for the pump track has been carefully selected to minimize disruption to the park's serene areas. You may have heard it is to be placed in the heart of the woodland. This isn't the case; the proposed site is located on an underused grass area in an accessible area that balances recreation and conservation. This new proposed location is the result of a previous consultation, held in 2022, in which the original area of the of lido was questioned, raising points around noise and disruption. With those points being taken onboard, this new location further away from houses and dog walkers was investigated.
--

See map below showing the proposed location (Figure 1) and rough size of the track. (Figure 2)
--

The pump track will harm wildlife, including various species of birds and bats.
--

Measures will be in place to protect the habitats of local wildlife. The track's design and location will ensure minimal disturbance to the natural environment and its inhabitants. Pump tracks by their very nature consist mostly of grassed banking with hard surfacing kept to a minimum. (Figure 2) Once complete the inclusion of additional, new planting will further enhance the biodiversity in the park, including new trees, native hedging and wildflowers.

Cyclists riding on footpaths will pose a danger to vulnerable pedestrians.

The pump track will be designed with clear separations from pedestrian pathways, such as native hedging and trees, ensuring safety for all park users. This will be bolstered with the addition of signage and line marking.
--

There is no access for emergency vehicles due to gated entrances and no staff manning the site.
--

There are several entrances to the site within a very short distance to the proposed location, enabling easy and quick access to the park. As with most leisure facilities in parks, such as playgrounds, tennis courts and zipwires, there will be no additional managing the site. As the site is aimed at younger people it is expected parents will continue to be responsible for their children's safety.

The track will lead to vandalism, bullying, and dangerous practices.

This is no different to any other playground or leisure facility. There is always a chance that undesirable people may use the area. However, it has been shown time and time again that involving the local youth in its design upkeep and maintenance will foster a sense of responsibility and community pride, reducing the likelihood of vandalism and misuse Evidence from many other pump tracks suggests that ASB is shown to decrease in these areas as people take on a sense of ownership and pride in their area.. Historically, areas without activities for users to engage in are more likely to suffer from ASB.
--

Parking issues.

The track is aimed at local youths, below driving age, who are predicted to travel on foot or by bicycle to the park and there an increase in parked vehicles in the area is not expected.
--

Alternative locations such as Marsden Hall Road, Ring stone Crescent, Walverden Park, and Hard Platts should be considered.
--

Each suggested alternative location has been evaluated. However, Marsden Park was chosen for its accessibility, suitability, and potential to serve the community effectively. The proposed site within Marsden Park offers the best balance of space, safety, and convenience, while providing the area with a much-needed resource for the younger members of our society.
--

The proposed site also takes into consideration other facilities in the park ensuring that no one area, such as Walton Lane becomes overwhelmed, while encouraging users to explore and enjoy the whole of the park.

The design and nature of the junior pump track ensures it is low maintenance with minimal environmental impact. Constructed using tarmac and grass, the example below at Witton Park is now 10 years old, has required minimal maintenance and is still in good condition. (Figure 3)

Thank you for taking the time to read through this information. If you would like to share your thoughts, please use this QR code to access an online survey.



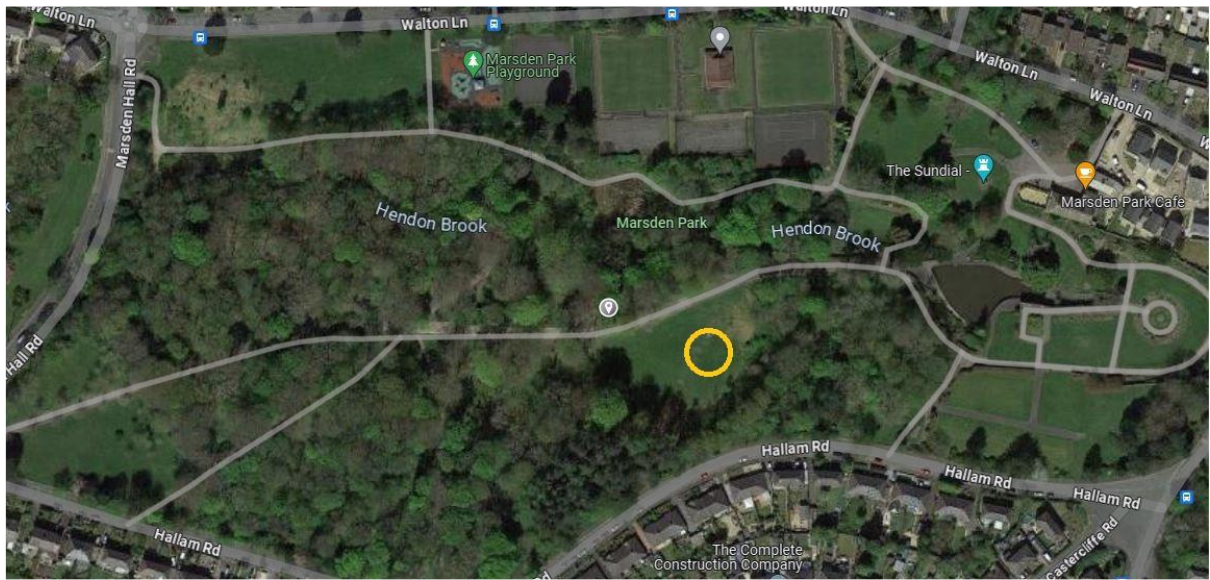


Figure 1- Proposed Location

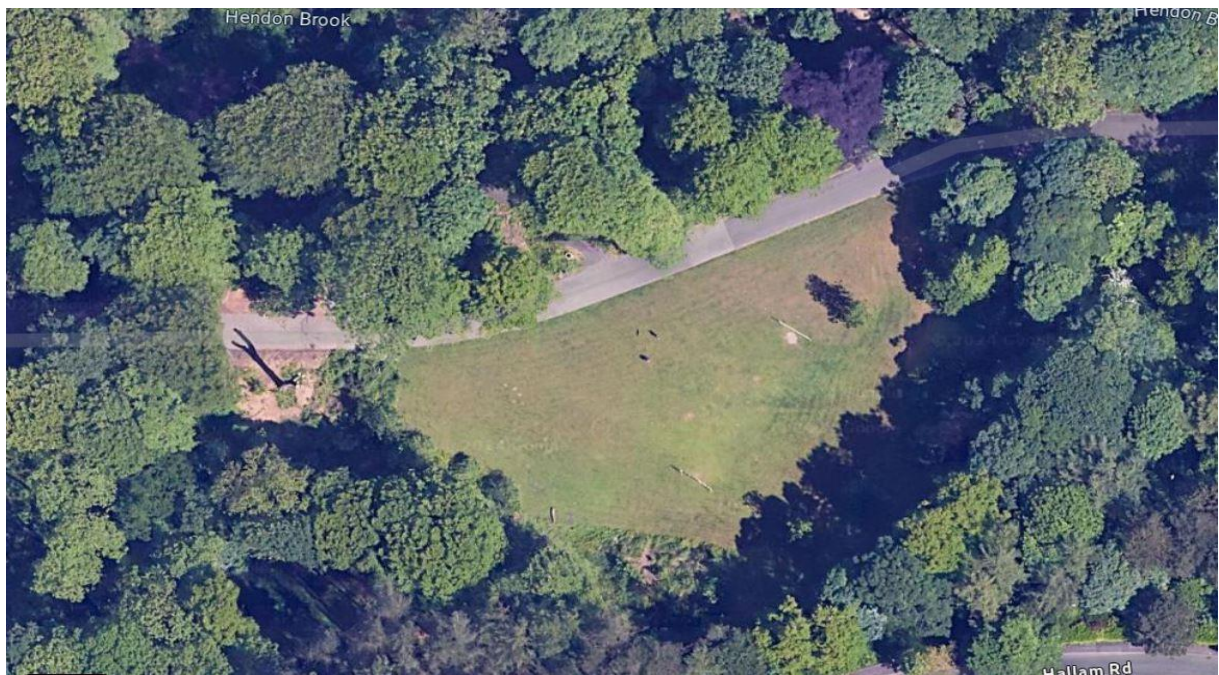


Figure 2- Rough design layout showing proposed size of track



Figure 3- Witton Park Pump Track