

SKATEPARKS AND PUBLIC SPACES

**SAMPLE SCHEMES**

**CANVAS**

Canvas Spaces Limited | 12 Dowry Square, Bristol BS8 4SH, United Kingdom.  
Registered Co. in England & Wales no. 8723592 | VAT Reg. no. 172 5172 16  
All content © Canvas Spaces Limited

ARTISTIC ENGINEERING



## You must be thinking about skateparks and spaces!

Thank you for taking the time to review some of our sample skatepark designs. The aim of this document is to give you an idea of size, budget and layout of some popular elements which form a skatepark or skateable/rideable space. The selection of designs have been chosen for their varied make-up with more 'street' or transition (ramp) orientated layouts and a mixture of both.

These example designs are intended to give you an idea of what can be achieved for a specified budget and space. However, we of course would welcome the opportunity to design a bespoke layout for your project as part of our consultation, design and construction service.

CANVAS can be involved with any stage of your project, from concept generation and consultation through to design development, planning and construction, with a free service for many aspects.

We are also pleased to announce that we have produced a similar document, aimed at installing isolated elements into an existing hard-standing or proposed site - an alternative design concept also proving very popular for its lower cost and its appealing use of space and usability. This is available on request.

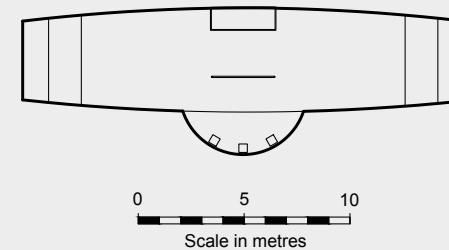
We very much look forward to discussing your project and ideas with you.

Many thanks,

A handwritten signature in black ink, likely belonging to a member of the CANVAS team. The signature is stylized and cursive, with the first letter being a large 'C'.

The CANVAS team





### Good to know

The ideal 'spot' for anyone wanting to enjoy classic forms, to learn and have fun

Hugely popular elements without the interference of larger forms

A booklet is available for skateparks under £50,000

### Budget

£45,000

### Materials

Float finish, reinforced concrete; integrally coloured concrete; galvanised steel coping and edging; wood-effect walls; hard-standing seating area

### Overall Dimensions

21m x 5.5m







### Budget

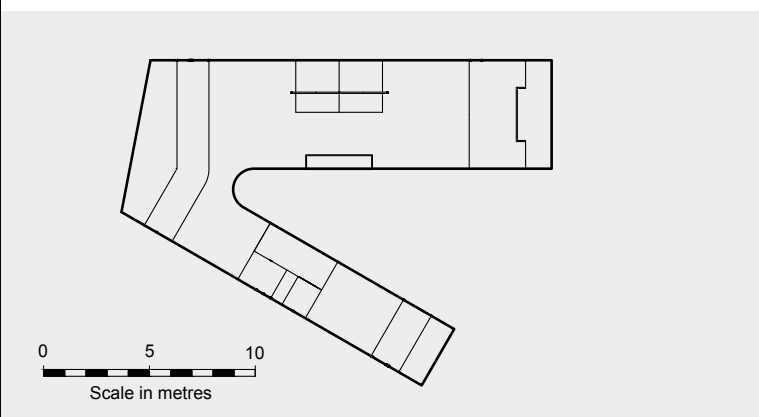
£66,000

### Materials

Float finish, reinforced concrete;  
integrally coloured concrete;  
custom artwork finishing;  
galvanised steel coping and  
edging

### Overall Dimensions

19m x 15m



### Good to know

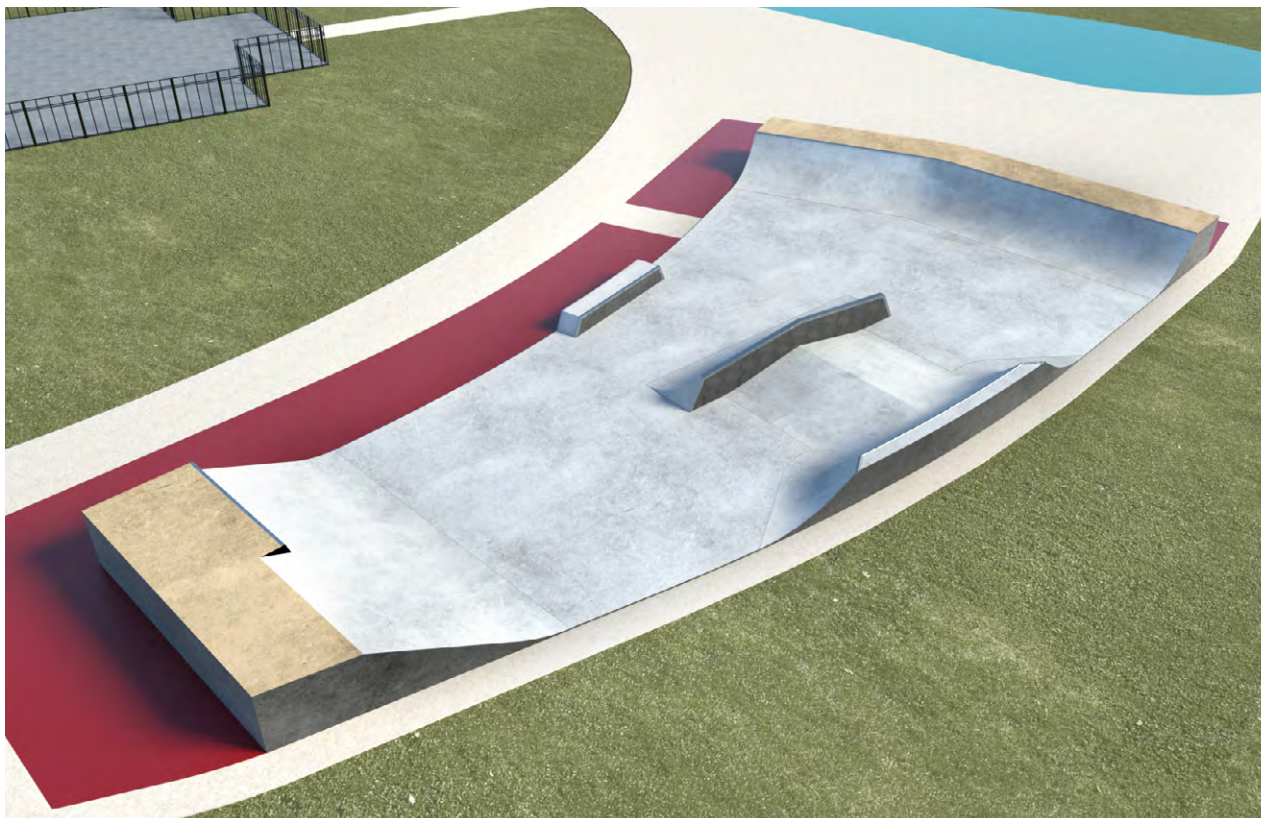
Low-level scheme

Two separate areas (Rhythm  
and 'Street') to maximise use

Rhythm area aimed at  
Scooter/BMX users

'Street' area aimed  
at skaters





### Good to know

Low-level scheme

.....  
Holds multiple users within  
a relatively small space

.....  
Offers varied forms  
and obstacles for  
differing types of use

.....  
Suitable for installation  
within an existing  
hard-standing area  
for cost-saving

### Budget

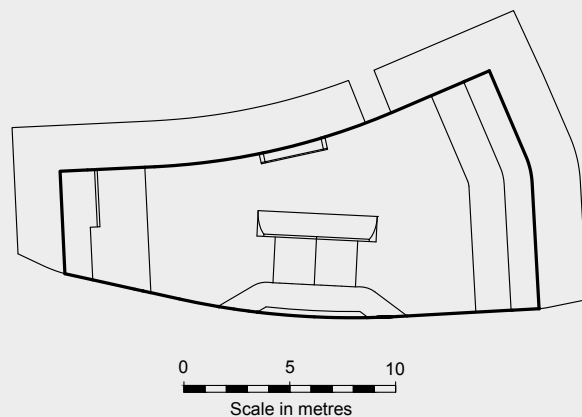
£67,000

### Materials

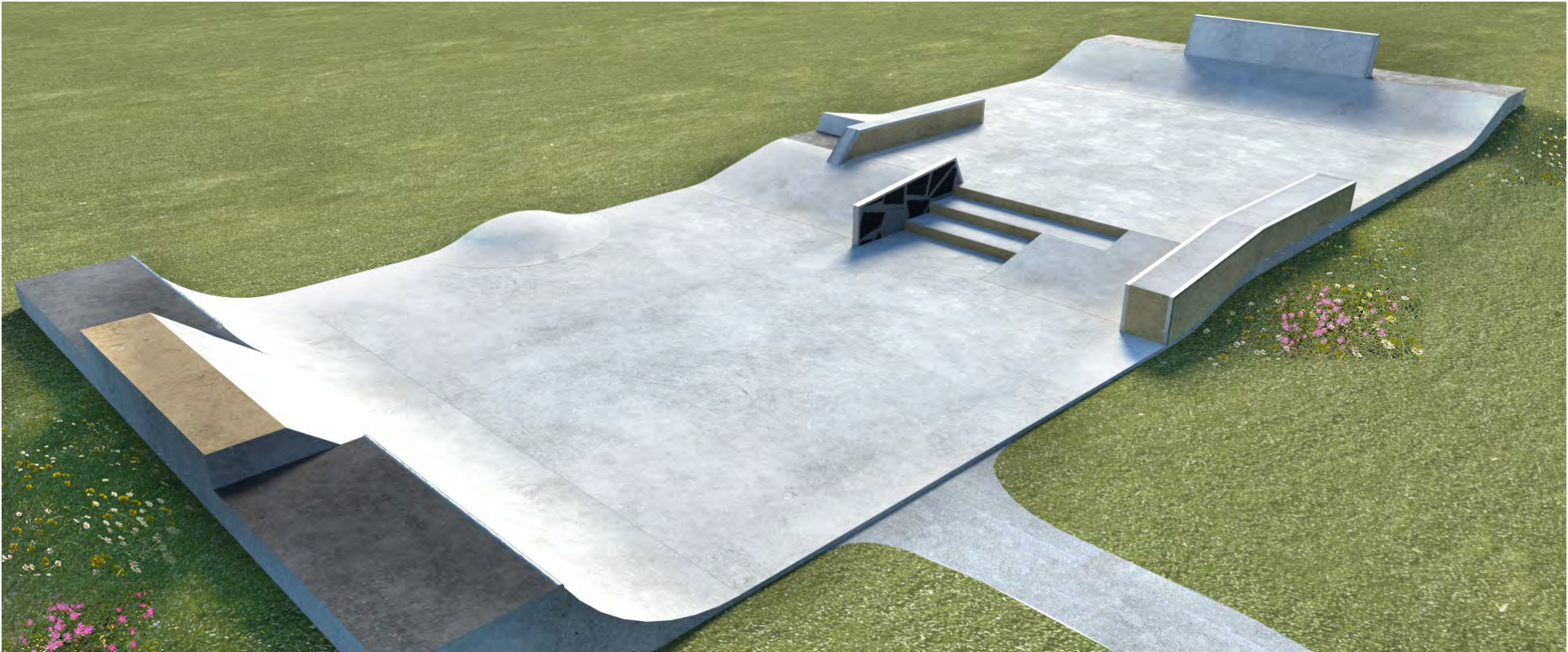
Float finish, reinforced concrete;  
integrally coloured concrete;  
galvanised steel coping and  
edging

### Overall Dimensions

20m x 10m







**Budget**

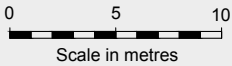
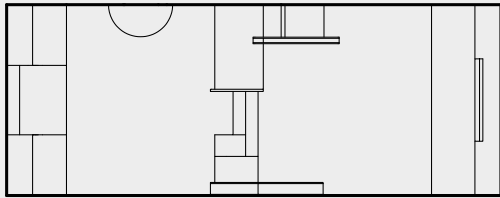
£85,000

**Materials**

Float finish, reinforced concrete;  
integrally coloured concrete;  
custom artwork finishing;  
galvanised steel coping and  
edging

**Overall Dimensions**

20 x 15m



**Good to know**

Low-level scheme

.....

Modern 'street' elements

.....

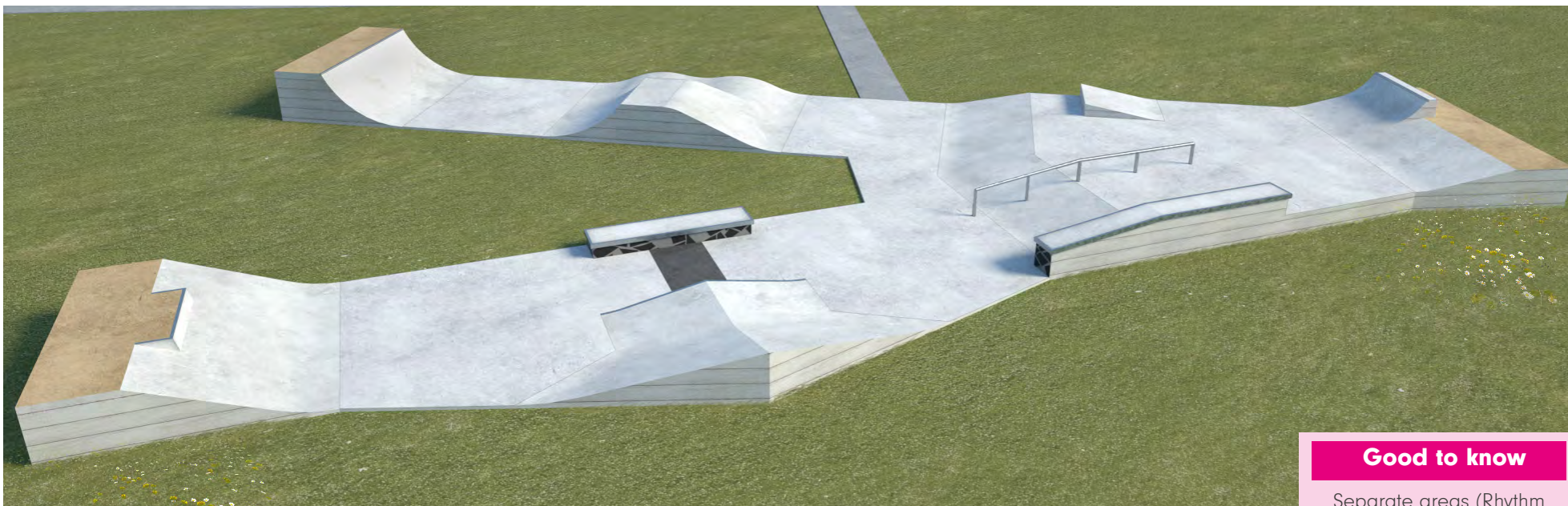
Spacious flatland areas

.....

Varied heights of ramps  
for progression







### Good to know

Separate areas (Rhythm and 'Street')

.....

Level change for economically fitting to existing ground levels

.....

Varied obstacles and forms to suit a wide range of use

.....

Layout can be used in separation or flowing throughout entire layout

.....

Retaining walls finished with wood panel effect to suit certain surrounding aesthetics

### Budget

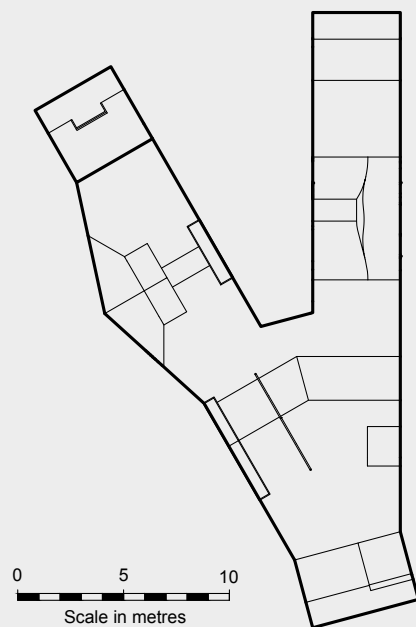
£92,000

### Materials

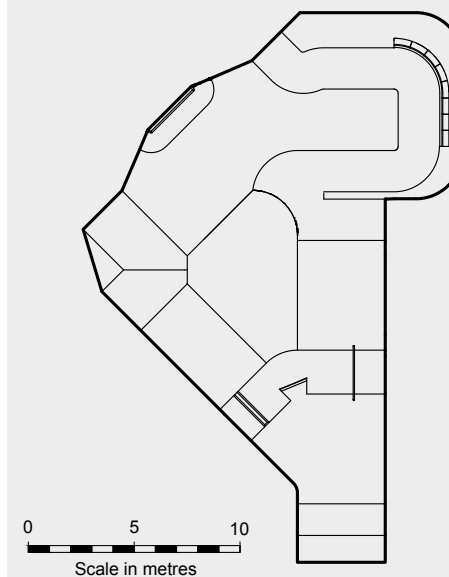
Float finish, reinforced concrete; integrally coloured concrete; custom artwork finishing; galvanised steel coping and edging; wood-effect retaining walls; granite blocks

### Overall Dimensions

28m x 17m







### Good to know

Lap-style layout to create longer lines within a smaller space

Mixture of ramp and street/park elements

Mini-ramp included and positioned in an area for separate use whilst remaining accessible

Hard-standing seating area

Soft landscaping opportunities within central area and perimeter

### Budget

£93,000

### Materials

Float finish, reinforced concrete; integrally coloured concrete; galvanised steel coping and edging; granite blocks ; pool coping

### Overall Dimensions

25m x 16m





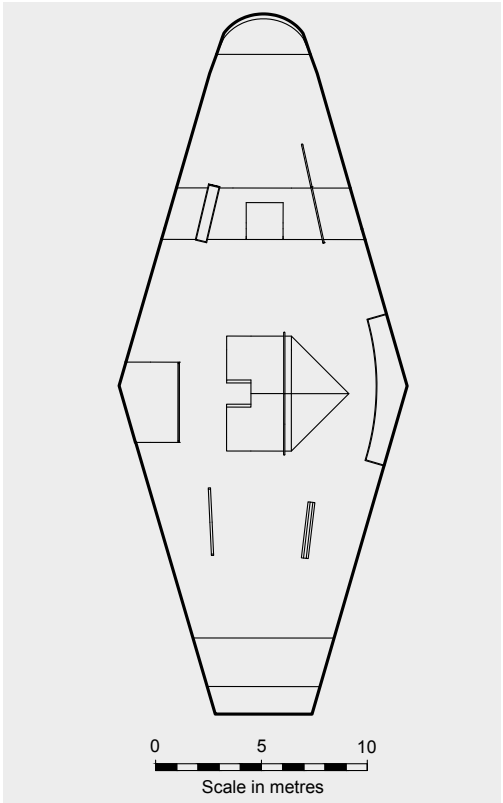


### Good to know

'Street' style forms and layout

Low-level obstacles for beginners and advanced technical users

Spacious layout, incorporating varied street elements for comfortable use



### Budget

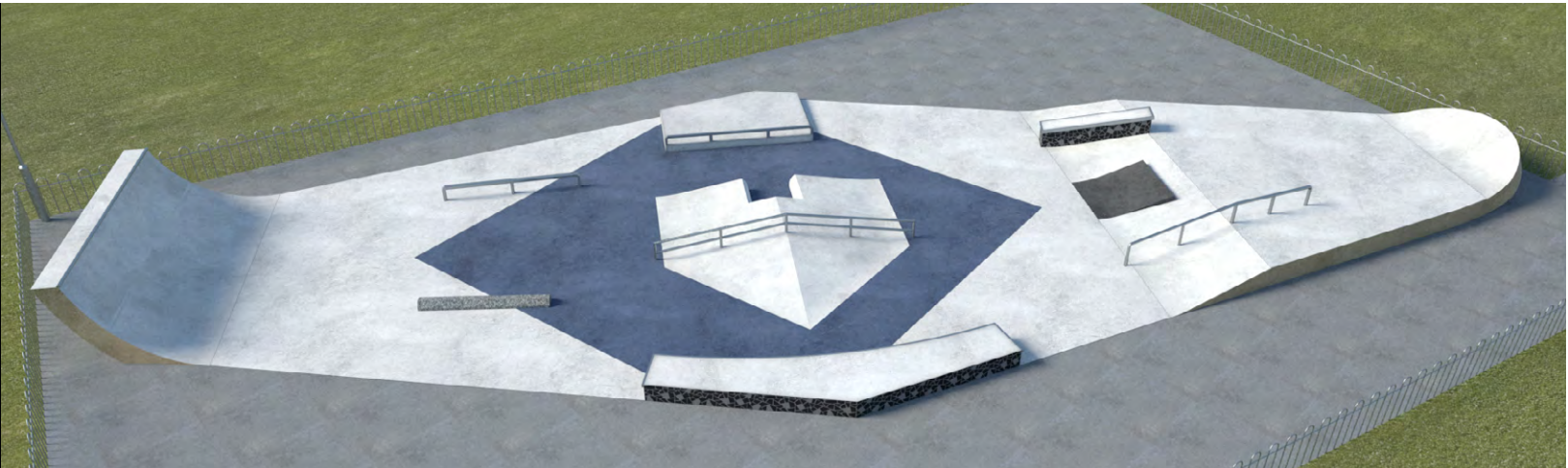
£105,000

### Materials

Float finish, reinforced concrete; integrally coloured concrete; custom artwork finishing; galvanised steel coping and edging; granite blocks

### Overall Dimensions

21m x 13m







### Budget

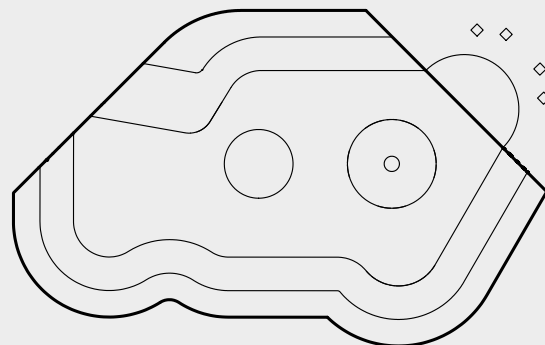
£112,000

### Materials

Float finish, reinforced concrete;  
integrally coloured concrete;  
custom artwork finishing;  
galvanised steel coping and  
edging; wood-effect retaining  
walls

### Overall Dimensions

24m x 14m



0 5 10  
Scale in metres



### Good to know

Low-level bowl layout for  
beginners and advanced  
technical users

.....

Benefits of an enclosed  
bowl whilst omitting  
the need for a positive  
drainage system

.....

Spacious standing space





### Budget

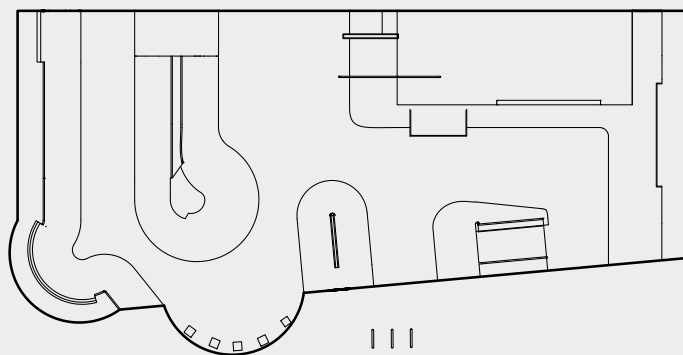
£160,000

### Materials

Float finish, reinforced concrete;  
integrally coloured concrete;  
custom artwork finishing;  
galvanised steel coping and  
edging; granite blocks

### Overall Dimensions

30m x 14m



0 5 10  
Scale in metres

### Good to know

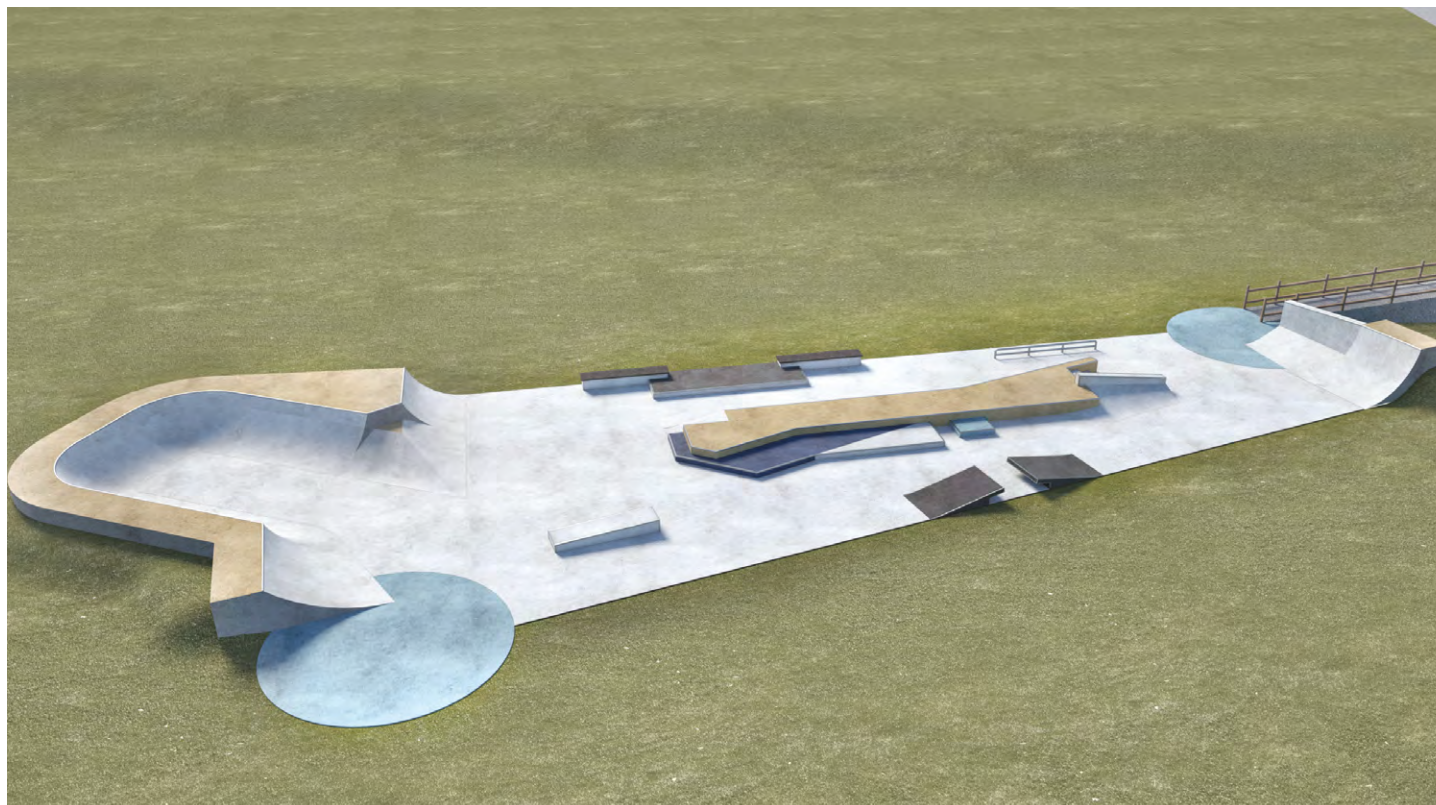
Inclusion of a mini-ramp with  
bowled elements, omitting  
the requirement for drainage  
within a closed bowl

Obstacles with varied  
angles of approach and use

Hard-standing seating  
area and cycle stands

Rolled lips and  
varied transitions





### Good to know

Spacious layout with 'street' features

.....

Central low-level stage, appealing to beginners and advanced technical users

.....

Rarely found 'street' features, appealing to many users

### Budget

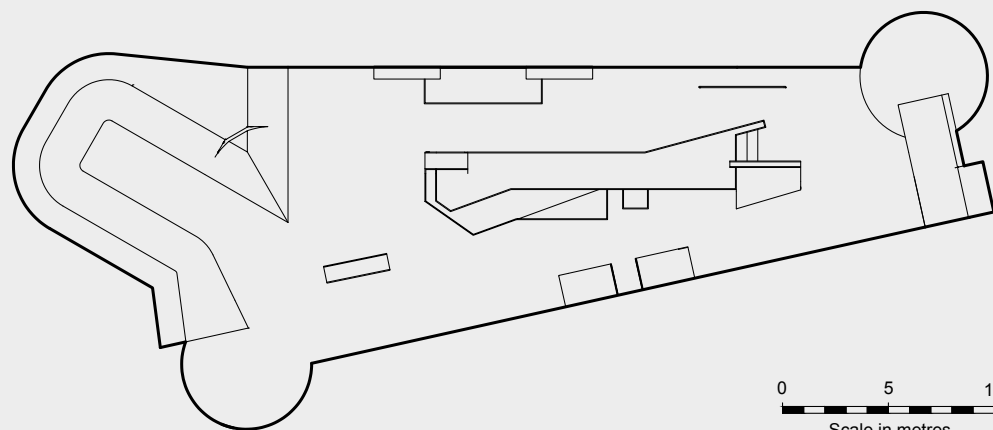
£190,000

### Materials

Float finish, reinforced concrete; integrally coloured concrete; galvanised steel coping and edging; granite blocks

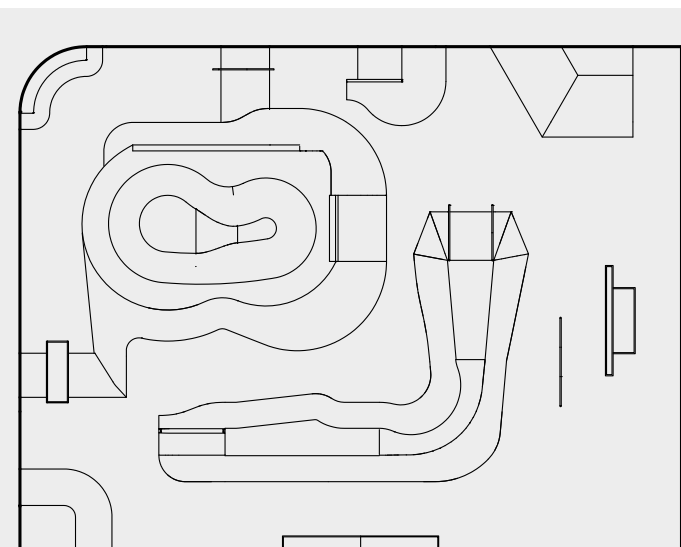
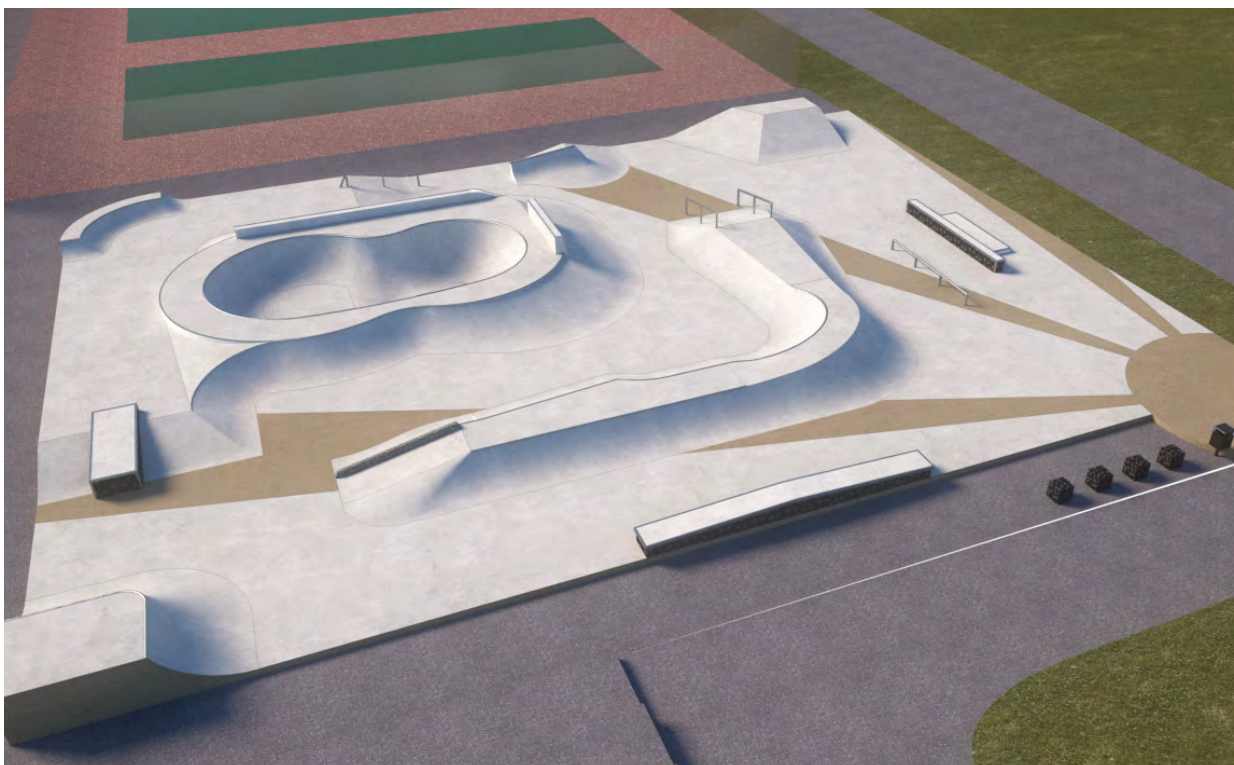
### Overall Dimensions

45m x 15m



0 5 10  
Scale in metres





0 5 10  
Scale in metres

### Good to know

Mix of plaza, street and ramp features

.....

Stand-alone pool

.....

Inner and outer lines to allow for busier times

.....

Popular 'street' features surrounded by plenty of space

.....

Slower and faster areas

### Budget

£270,000

### Materials

Float finish, reinforced concrete; integrally coloured concrete; custom artwork finishing; galvanised steel coping and edging; granite blocks

### Overall Dimensions

30m x 22m







### Budget

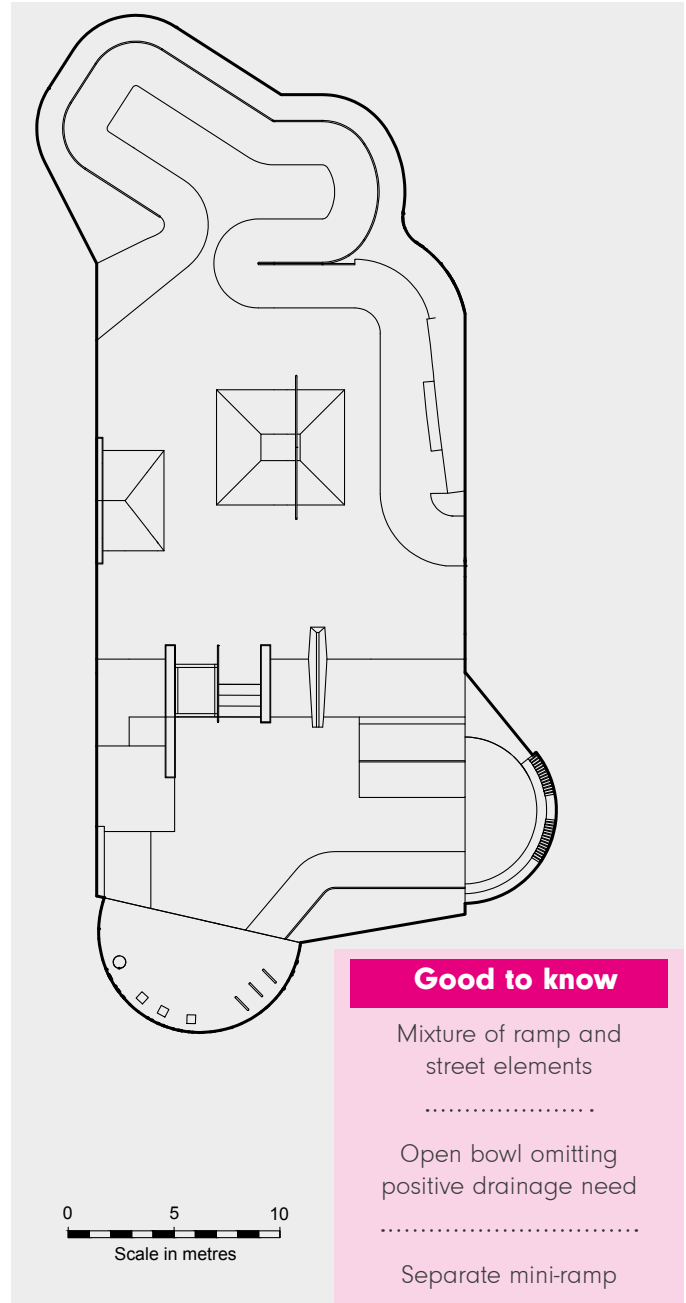
£275,000

### Materials

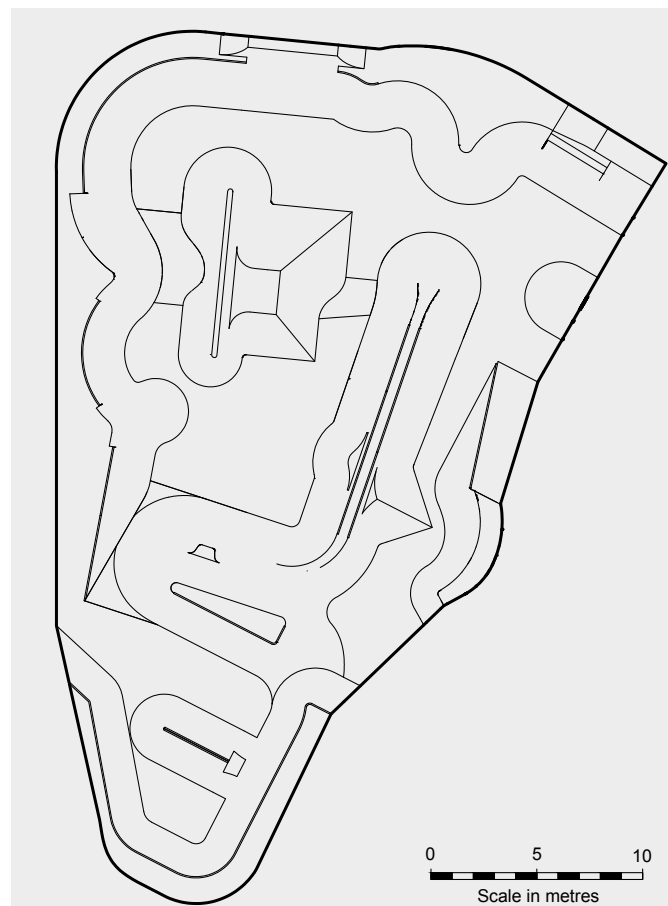
Float finish, reinforced concrete; integrally coloured concrete; custom artwork finishing; galvanised steel coping and edging; wood-effect retaining walls; granite blocks

### Overall Dimensions

45m x 18m







### Budget

£290,000

### Materials

Float finish, reinforced concrete; galvanised steel coping and edging;

### Overall Dimensions

42m x 26m



### Good to know

Varied transitions to encourage progression and interest

.....  
Inclusive for beginners through to advanced users  
.....

Rarely seen transition-based skatepark with ramps on all sides ranging from low-level to high-level





### Budget

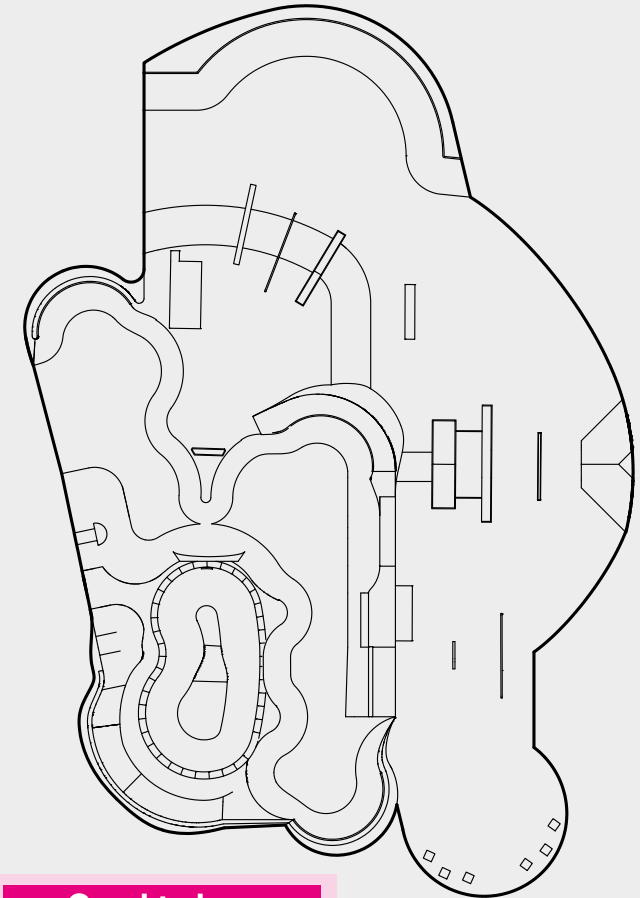
£295,000

### Materials

Float finish, reinforced concrete;  
integrally coloured concrete;  
custom artwork finishing;  
galvanised steel coping  
and edging; granite blocks;  
stone-effect retaining walls;  
sustainable drainage system

### Overall Dimensions

39m x 25m



### Good to know

Mixture of ramp and  
street elements

.....

Stand-alone pool

.....

Usable in separate areas  
whilst allowing flow  
throughout the entire space

0 5 10  
Scale in metres





### Budget

£400,000

### Materials

Float finish, reinforced concrete;  
integrally coloured concrete;  
custom artwork finishing;  
galvanised steel coping and  
edging; granite blocks

### Overall Dimensions

94m 15m

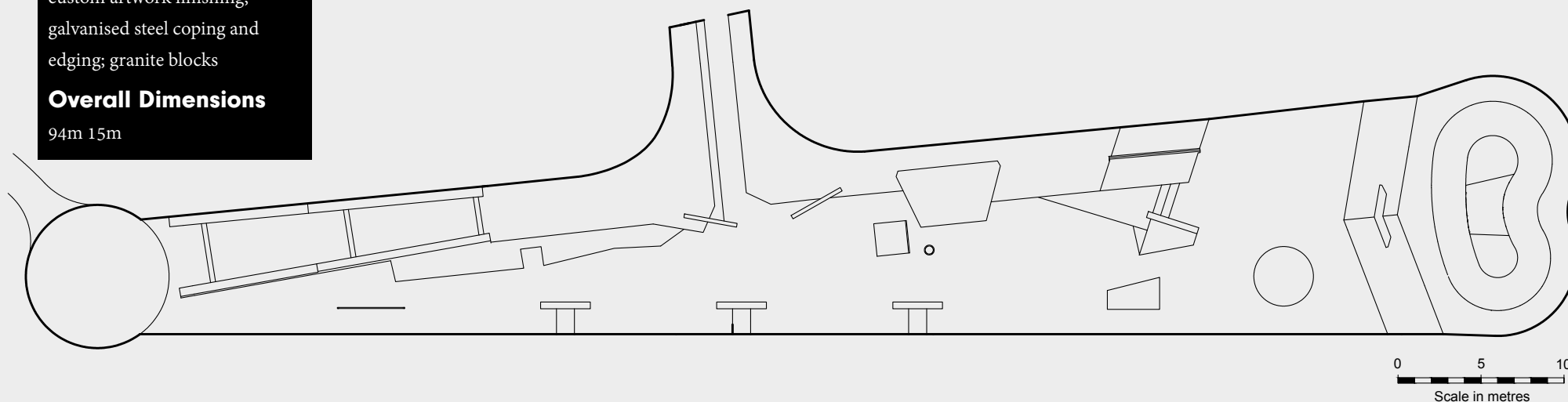


### Good to know

Plaza-style layout and forms

Cost-effective features

Spacious layout designed to take  
advantage of desirably large flat  
areas and lines of 'street' obstacles







## Contact us

Follow us on social media for updates  
of parks, projects and events

### **Canvas Spaces Limited**

12 Dowry Square

Bristol

United Kingdom

BS8 4SH

t. +44 (0)117 373 0818

e. [info@canvasspaces.co.uk](mailto:info@canvasspaces.co.uk)

[www.instagram.com/canvas\\_sps](https://www.instagram.com/canvas_sps) 

[www.facebook.com/canvas.spaces](https://www.facebook.com/canvas.spaces) 



FS 671793







A R T I S T I C   E N G I N E E R I N G

Canvas Spaces Limited | 12 Dowry Square, Bristol BS8 4SH United Kingdom  
Registered company in England & Wales no. 8723592 | VAT Reg. no. 172 5172 16