

Introduction: Objectives and Scope

Introduction

- The main objectives of the project is to determine, on behalf of the Health system and key stakeholders, the future service requirement in Barnoldswick and how we best accommodate; based upon a health led review of demand and supply taking into consideration condition and investment required.

Current status

- Since 2018 NHSPS has looked at various options, working alongside stakeholders
 - East Lancashire CCG
 - ELHT
 - Airedale FT

[Barnoldswick, England - Google Maps](#)



Current Demise – Barnoldswick Butts Clinic

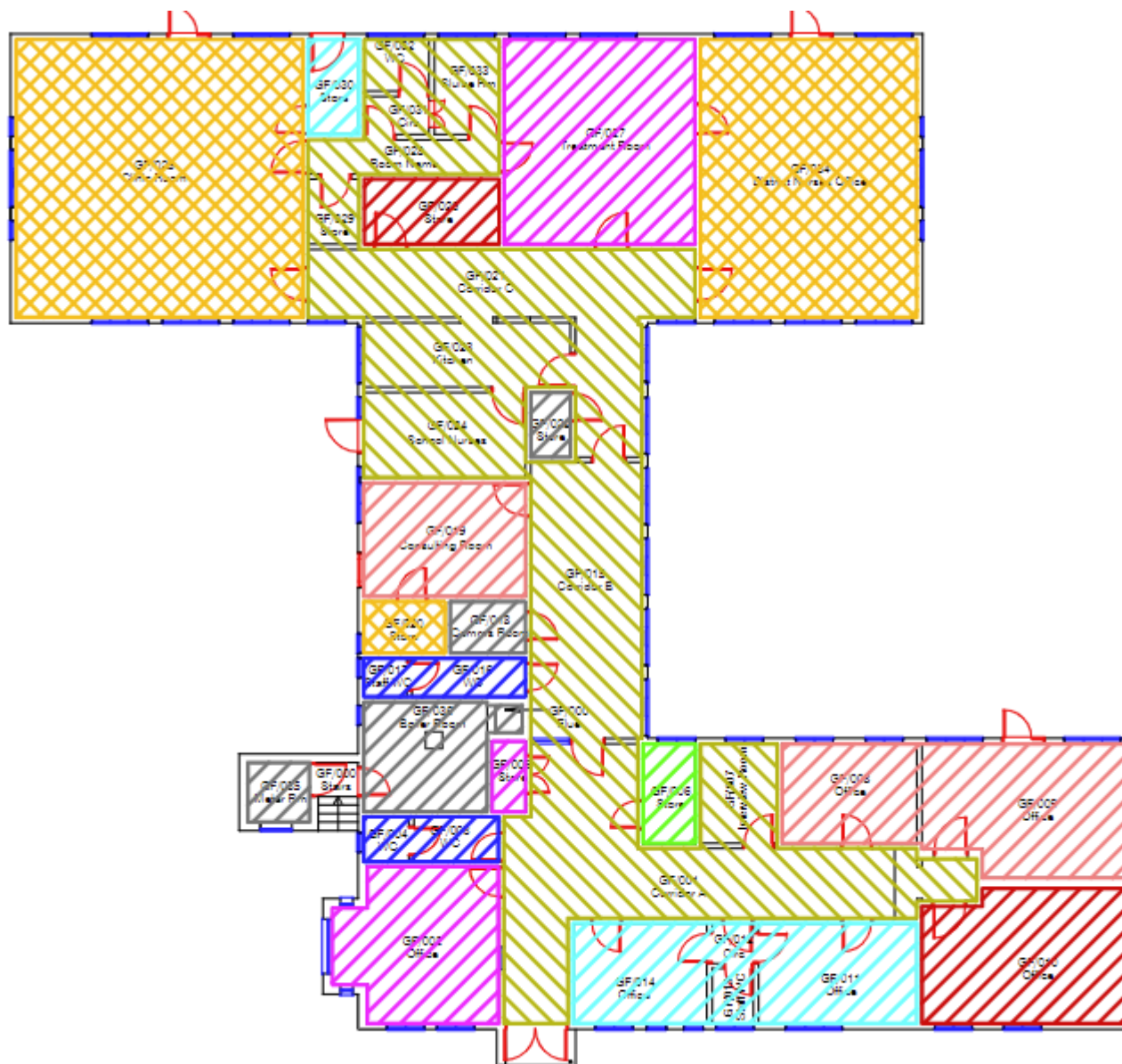











Property Services

Occupiers	Occupancy Tenure	Exclusive occup'n NIA	Shared area NIA	Total NIA (sqm)	Services	Commissioner Body
Airedale FT -	Undocumented			41.36	Midwives	CCG
East Lancashiire Hospitals FT	Undocumented			105.01	Children's Speech and Language therapy. Podiatary	CCG
Lancashire and South Cumbria FT	Undocumented			5.47	sessional	CCG
CCG void/Vacant	Undocumented			151.53	Space currently void	VOID
TOTAL						

Occupancy status

- As stated above the occupiers are currently all undocumented and due to COVID all but the midwives are currently working remotely or from other sites.



	01000	NIA	24.41 m ²
	01200	NIA	27.28 m ²
	01300	NIA	3.61 m ²
	01400	NIA	44.85 m ²
	NHSPS Vacant	NIA	99.94 m ²
	NHSPS Shared Area	NIA	124.01 m ²
	NHSPS Sessional Space	NIA	40.13 m ²
	NHSPS Common Parts	GIA	8.46 m ²
	NHSPS Retained Area	GIA	17.08 m ²

Requirements and Demand

MONDAY		TUESDAY		WEDNESDAY		THURSDAY		FRIDAY	
AM	PM	AM	PM	AM	PM	AM	PM	AM	PM
Airedale Midwives (Colne HC)		Airedale Midwives		Airedale Midwives		Airedale Midwives		Airedale Midwives	
SALT (LSCFT)	SALT (LSCFT)	SALT (LSCFT)	SALT (LSCFT)	Podiatry	Podiatry	Treatment Room	Treatment Room		
Podiatry	Podiatry	Minds Matter	Minds Matter	Minds Matter					
Minds Matter	Minds Matter				Treatment Room				
Treatment Room	Treatment Room								

Airedale Midwives

Current Caseload (by area): Barnoldswick (45); Earby (30); Colne (36); Others [incl Pendle West and Burnley] (12); Out of Area [Ribbles Valley and Skipton] (4)

Based on the number of ladies from Colne and Others - is there scope to utilise a room at Colne Health Centre (? Cost implications)

Use Butts clinic as an office base and occasional PN visit in the afternoon (Mon - Fri).

Will need lockable storage and access to the internet. Room sufficient to hold a couch, handwashing facilities, screen and two chairs.

Midwives ran an antenatal clinic from Earby Surgery on Wednesday AM but due to limited capacity/clinical space, this is no longer being offered by the practice.

Children's Centres in both Colne and Barnoldswick have no plans to re-open their doors currently. Airedale used to see ladies at Colne on a Monday and Thursday AM and at Barnoldswick on a Monday and Tuesday AM. This status may change.... Meeting being held 30.06.21 about the future of Children's Centres.

Minds Matter (ELHT)

Looking to hold face to face in the community but somewhat reduced from what they previously offered. More information to follow one clarity has been sought from clinicians.

Days could be flexed not fixed - awaiting clinician confirmation.

SALT (LSCFT)

Currently seeing clients from Barnoldswick and Earby in clinics held at both YS in Nelson and St Peters in Burnley.

Client caseload still the same

Ideally need one room for 2 full days a week (previously Monday and Tuesday - ideally keep these days and times)

Podiatry (ELHT)

Moved out of Butts Clinic and are currently providing the service from Colne Health Centre.

Natalie Wood advised that the service are not keen to move into Rainhall - this needs a further discussion with commissioners.

Treatment

Room (ELHT)

Moved out of Rainhall Centre and are currently providing the service from Colne Health Centre.

Monday and Thursday or Tues/Fri and half day where it fits 08:30 - 17:00 and 13:30 - 17:00. Will require lockable storage space.

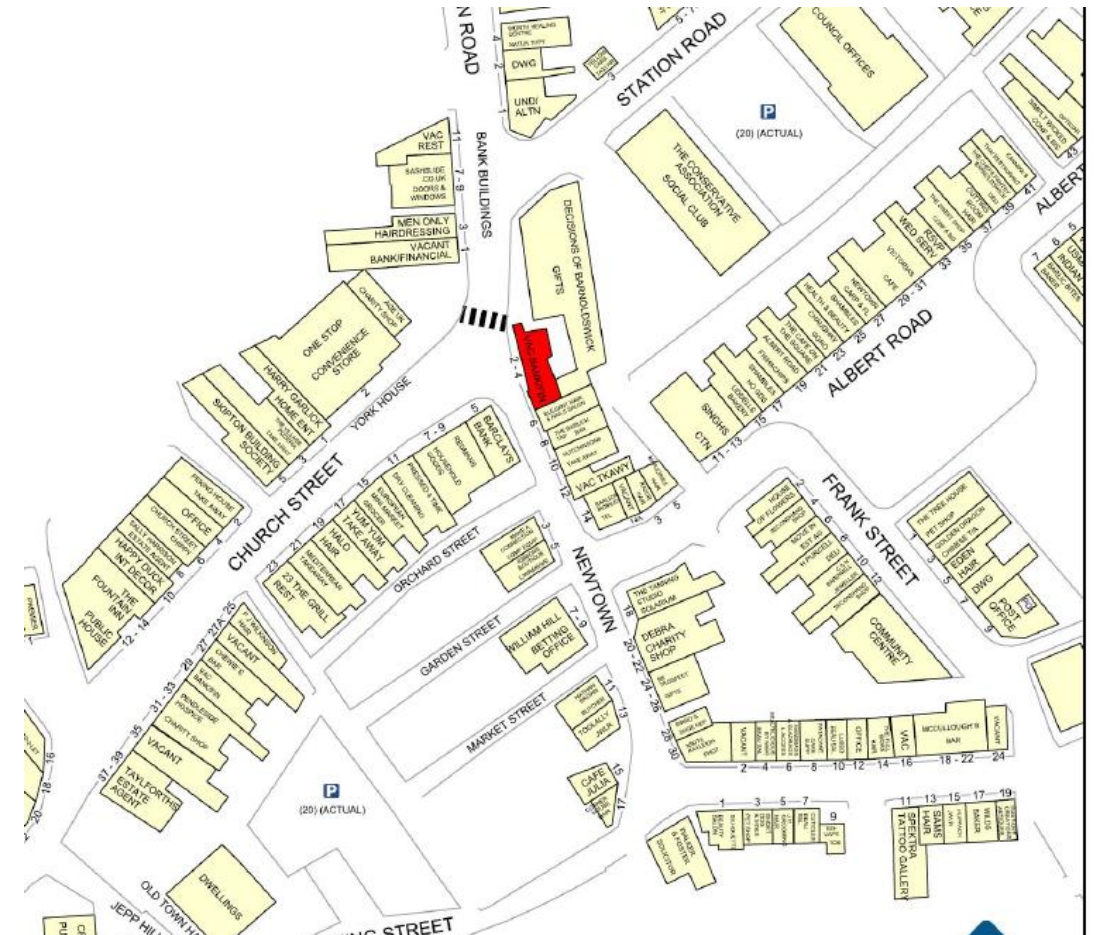
NB Noise in the system from patients has started again within the communities with regard to services coming back closer to home.

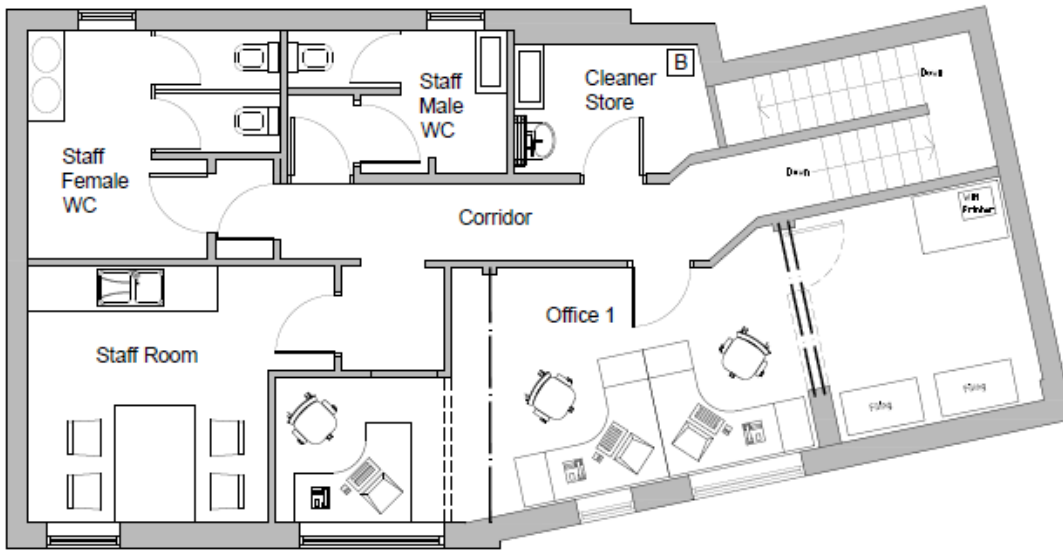
Preferred Option – Former Bank

Secure 3 x multipurpose rooms, one consulting rooms and back office to provide space within Barnoldswick so services are not displaced. The rooms will support Minds Matters, Speech and Language, Midwifery and Podiatry. Bookable space will also be available at the Colne HC as a overflow solution for patients who are able to travel the 4 mile journey. The rooms will be modern fit for purpose flexible space which will be co-located with existing NHS services within a well established Community building.

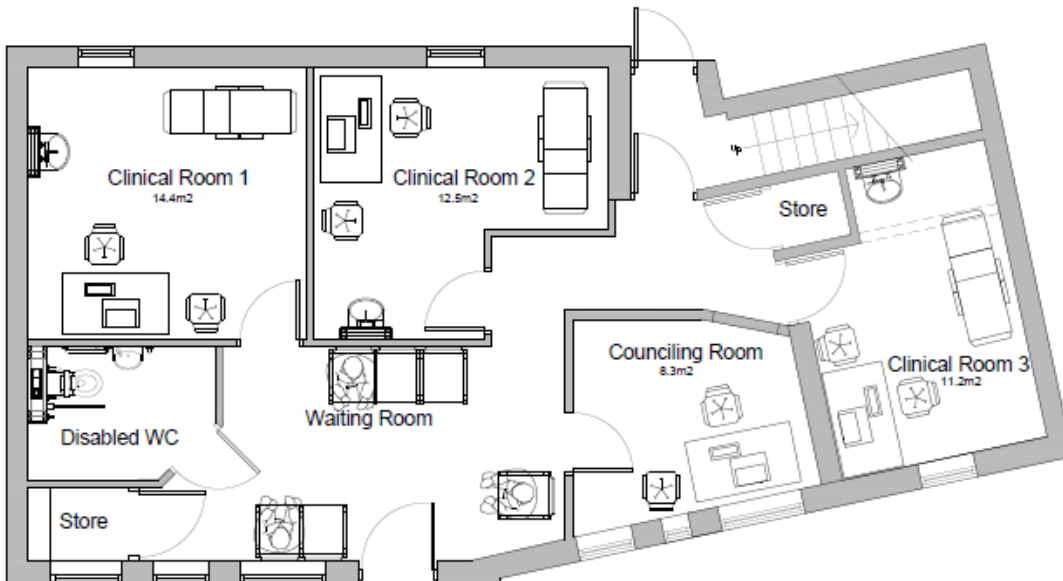


[9 B6251 - Google Maps](#)





Proposed First Floor Plan
1:50 Scale



Proposed Ground Floor Plan

Pro's

- Co-located with existing NHS services
- The proposed space will be modern fit for purpose and fully compliant.
- Will reduce overall running costs versus current facility
- Will ensure services are retained within Barnoldswick
- Disposal of Barnoldswick Butts clinic to generate a capital receipt
- Promotes Health on the high street

Con's

- Floor space available will reduce