

PETITION REQUESTING PARKING CHANGES AND REMOVAL OF GRASS VERGE IN CHAPEL STREET, BRIERFIELD, PENDLE

1st July 2021

To Lancashire County Council

We are writing to request that LCC can take action to remove the grass verges that are still in place on the upper end of Chapel Street in Brierfield (BB9 5DF).

Currently the Upper and Lower parts of Chapel streets have already had their grass verges removed and replaced by either tarmac or block paving. (See Appendix 3a and 3b)

The reason for this request is that parking is a big issue now and is worsening over time, (as family sizes and other factors such as more people owning vehicles). Furthermore road safety is a big concern as there is a T-junction leading off Chapel Street on to Limefield Avenue which on its own wouldn't have been an issue, however Chapel street is also a dead-end road so vehicles need to reverse from Chapel street onto Limefield Avenue to turn around due to the grass verges, cars can only park on the road (legally) and therefore the space for the T-Junction is very limited (see Appendix 1b).

The above actions (on the T-junction) have also caused damage to vehicles overtime (due to restrictive space), (please see Appendix 2).

Supporting information –

- 1) Grass verges from 81 Chapel street and above do not exist. (See Appendix 3a)
- 2) Grass verges from 65 Chapel Street and below have been replaced with tarmac / block paving for parking (See Appendix 3b)
- 3) Damage caused to vehicles whilst parked legally on the road due to restricted T-Junction and not being able to park on the verge (See Appendix 1b).
- 4) Current grass verges in bad state of repair and danger to public.
- 5) LCC have to maintain the grass verges to cut the grass (when required), this is an extra cost that is not required if grass verges are removed.

Currently the grass verges between 79 Chapel Street and 67 Chapel Street are in a bad state of repair, as some bollards are missing / removed, there are potholes within the verges themselves which is already a danger to the public (See Appendix 1a)

Our proposals are as follows.

1 – remove grass verges from 79 Chapel Street to 67 Chapel street (whole side) and tarmac over so that cars can park on the pavement (however if pavement parking is not allowed then please see proposal 3)

or

2 – remove grass verges remove grass verges from 79 Chapel Street to 67 Chapel street (whole side) and replace with block paving so that cars can park on the pavement (however if pavement parking is not allowed then please see proposal 3)

or

3- remove grass verges and indent the verge space back so the parking bays can be created in the affected areas (see Appendix 4 for affected areas and proposals)

Please see attached petition signed by residents, we all feel very strongly about this and we know that this will be investigated by yourselves with all the evidence in mind.

Regards

Chapel Street (Brierfield) Residents

We the residents of Chapel street Brierfield agree to the proposals highlighted in the letter.

[illegible]

Appendices

Appendix 1a



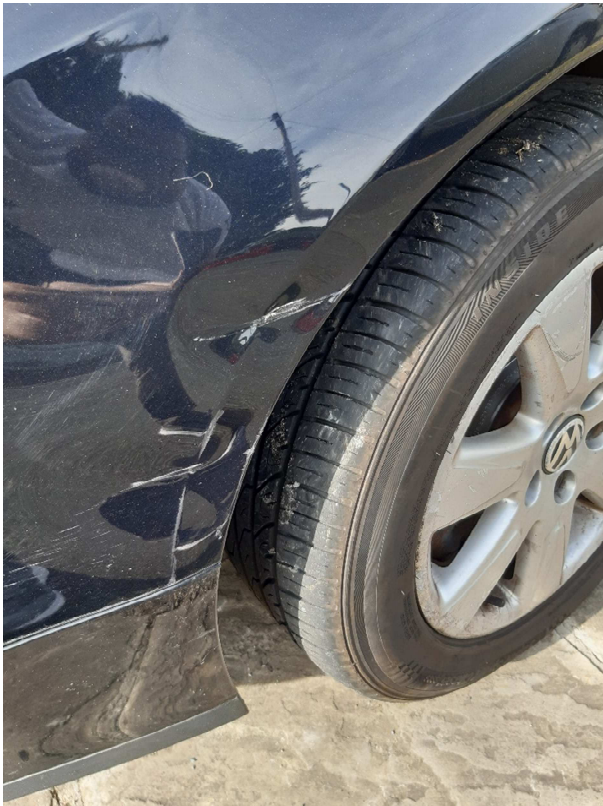
- 1 Some bollards are missing
- 2 Cars having to find space in between bollards to park

Appendix 1b

Junction below has very limited space for reversing, due to cars having to park on the road, this also causes issues with the Pendle Bin collections, as the trucks must reverse on this corner.



Appendix 2



Appendix 3a

Grass verges from 81 Chapel street and above do not exist and have been removed. Please see before and after photos



Appendix 3b

Grass verges from 65 Chapel Street and below have been replaced with tarmac / block paving for parking



Appendix 4

Affected areas highlighted in boxes below



Possible proposal - remove grass verges and indent the verge space back so the parking bays can be created in the affected areas (example below)

