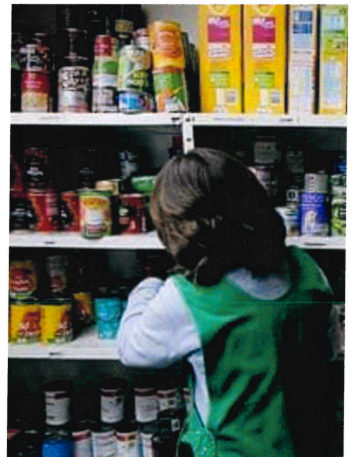
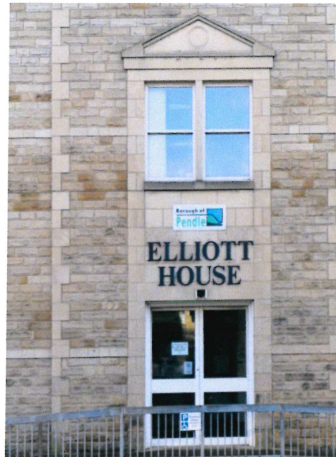


Elliot House

A connected and thriving Community Hub



www.lightbeamacademy.org.uk

Community Hub at Elliot House

The LightBeam Academy is a registered UK Charity (No: 1179496) established in April 2017 to serve the local community of Pendle and East Lancashire.

The Elliot House Community Hub will promote wellbeing, cohesion and respect for all members of society. Our aim is to create a hub of community services in one place which is inclusive and accessible to all.

Objectives

Our objectives are as follows:

- Create a Community space for integration, community cohesion and interfaith work
- Provide a quality supplementary-school Education addressing underachievement in the Pendle area
- To address issues affecting those who are socially and economically marginalised
- Create an environment for Excellence in Sports, Art and Drama
- Deliver sensitive and culturally appropriate mental health services to the local community
- Provide a safe space for Community mediation and restorative justice
- To offer advice and guidance and specialist support services to all communities with a particular emphasis on the Eastern European and Refugee communities

Our current partnerships

- Hawes Community Farm, Colne
- Inayat Health and Wellbeing, Burnley and Pendle
- Inspiring Grace, Pendle
- Pendleside Hospice
- Emmaus, Burnley
- Open Door, Colne
- Pendle Awaaz Radio, Pendle
- SeanLovell Films

Elliot House – A Community Hub

Elliot House will house three diverse organisations providing a range of services.

LightBeam Academy – registered charity number: 1179496

- A community-based organisation providing education, interfaith and community cohesion activities.

Inspiring Grace – registered charity number: 1158044

- Established in 2008, providers of one of the largest foodbank support service in Pendle. Inspiring Grace also provides sports activities and a Scouts Programme.

Inayat Health and Wellbeing - Inayat delivers mental health training across the Northwest. It also provides Counselling services, Safeguarding Children training and Mediation and Restorative Justice services

We are also in discussion with other community organisations who are keen to have a base in the Community Hub.

The services that will be delivered from Elliot House include:

- Culturally sensitive Mental Health services and training workshops
- Community Café
- Community Space for interfaith work
- Foodbank and Support services
- Advice and Guidance hub – addressing Refugee and Eastern European needs
- Exercise and fitness centre for disadvantaged/vulnerable people
- Tackling social isolation amongst elderly and women.
- Mother and Toddler groups
- Community Meeting Spaces
- Business Hub – Hot desking facilities
- Drama and Arts Classes for children with autism and learning disabilities
- Substance misuse support
- Community mentoring scheme for young offenders
- Counselling and Mediation Services
- Training facilities for the community
- Alternative health and Homeopathic clinics
- Outreach services for the NHS, including nurse visits, physiotherapy sessions
- A hub for Adult Education provision including the delivery of key life skills and ESOL
- Booster classes for English, Mathematics and Science for all ages to raise educational attainment levels



Elliot House
Feasibility study

LUM
LUMITEKTON

LU178-F01

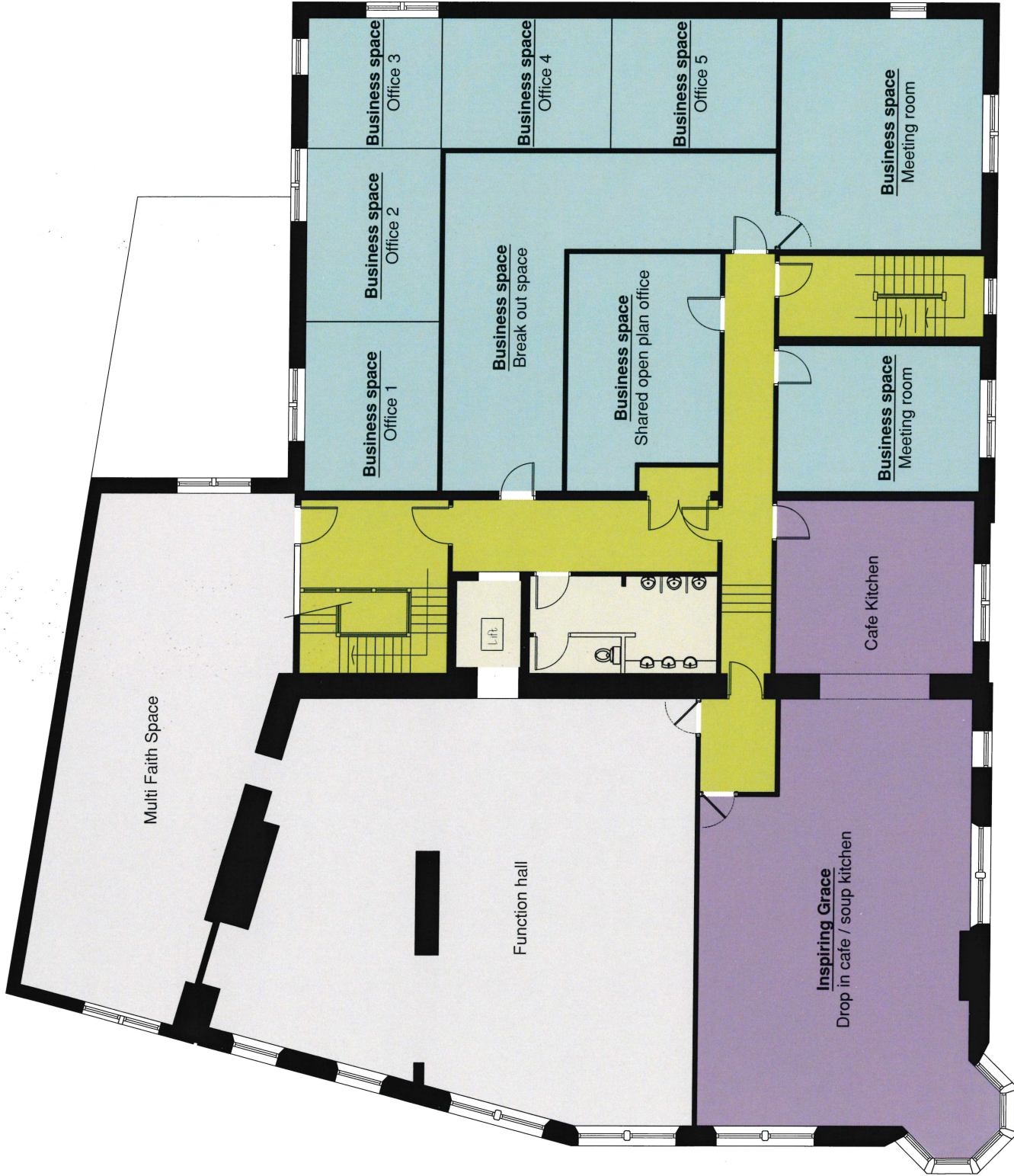
Ground Floor Plan
1:100@A3



Elliot House
Feasibility study



First Floor Plan
1:100@A3



Second Floor Plan
1:100@A3