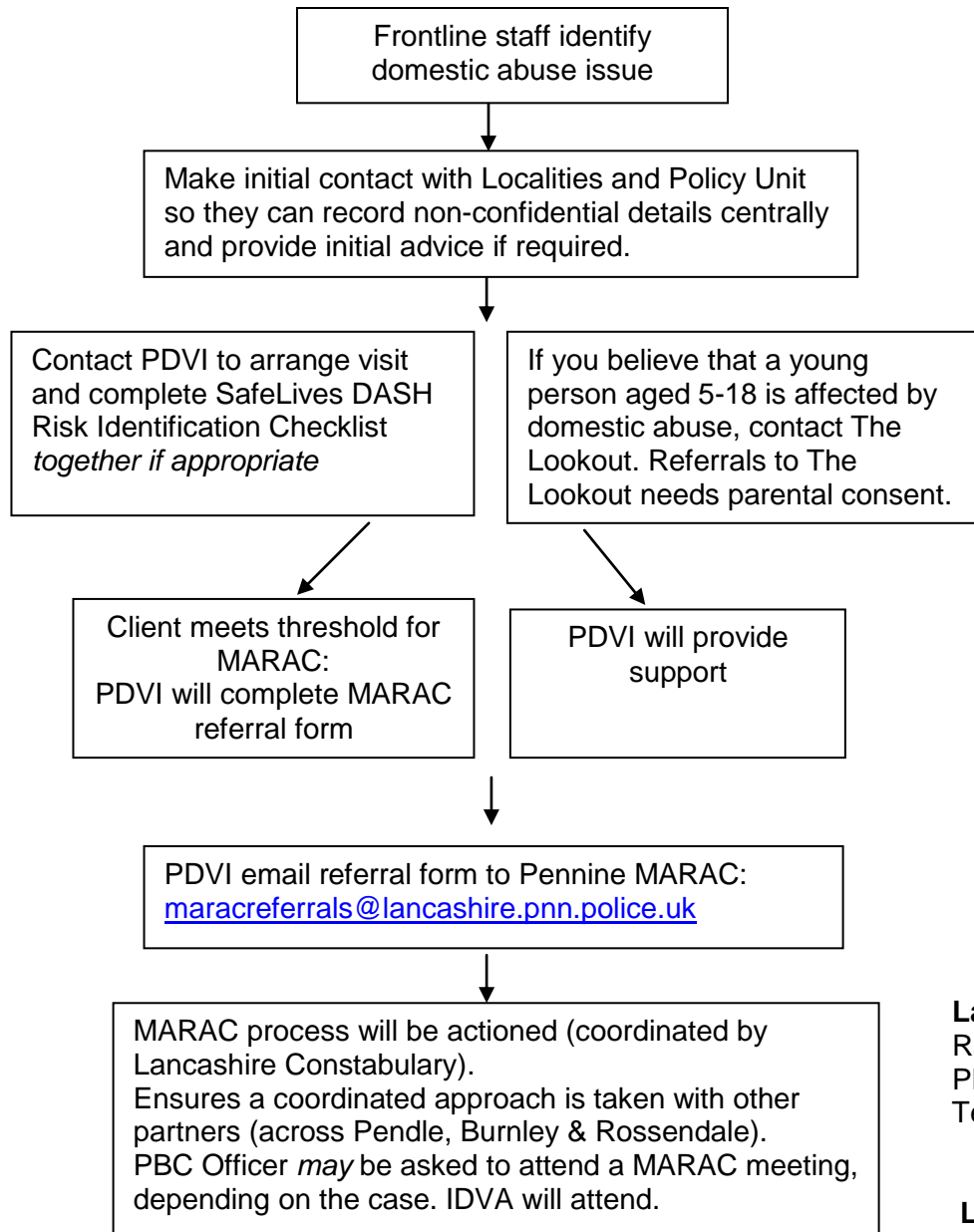


If any immediate risks are identified, contact the Police or Social Care Services on 0300 123 6721



PBC Policy support:
Sarah Astin: ext. 1782
Tim Horsley: ext. 1280

Domestic Abuse Service Manager for 'PDVI'
Jen Gore 01282 726001
jen.gore@p-a-c.org.uk

Lancashire MARAC Chair
Rabiya Jiva
PPU Headquarters, Hutton
Tel. 01772 412669

Lancashire MARAC Co-ordinator
maracreferrals@lancashire.pnn.police.uk
Tel. 01772 412771

Key:
MARAC = Multi-Agency Risk Assessment Conference
DASH = Domestic Abuse, Stalking and Honour-based Violence (Risk Identification Checklist)
IDVA = Independent Domestic Violence Advisor
PDVI = Pendle Domestic Violence Initiative
PPU = Public Protection Unit