



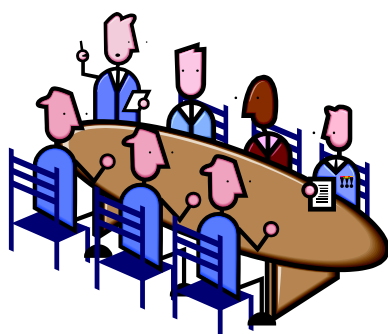
A MEETING OF THE
**HEALTH AND SOCIAL CARE
SCRUTINY PANEL**

will be held at

**7.00 p.m. on Tuesday 22nd August, 2017
at the Town Hall, Nelson**

The Health and Social Care Panel considers issues which affect the health and social care of people in Pendle and seeks improvements where necessary.

Members of the public may speak at the meeting. You should try to make your request in writing or by telephone by 12 noon on the day of the meeting. If you are unable to do this however, the Chairman may still allow you to speak if you turn up at the meeting.



**For further information please contact
Committee Services on 01282 661648**

AGENDA FOR A MEETING OF THE HEALTH AND SOCIAL CARE SCRUTINY PANEL 22ND AUGUST, 2017

1. MINUTES

Enc. The minutes of a meeting of the Panel, held on 21st June, 2017 are submitted for approval.

2. SCRUTINY REVIEWS

Highlighting the symptoms of Sepsis

Heather Coleman and Paul Dean of East Lancashire Hospitals Trust will attend the meeting to give a presentation.

3. CLINICAL COMMISSIONING GROUP UPDATE

To welcome Dr. Asif Garda, the new Clinical Commissioning Group (CCG) clinical lead for Pendle.

Enc. The minutes of the Pendle Locality Commissioning Steering Group held on 4th May, 2017 are submitted for information.

4. LOCAL STRATEGIC PARTNERSHIP THEMATIC GROUPS REPORT

Enc. The Neighbourhood Services Manager submits the attached report which provides an update on progress with the Health and Social Care elements of the Local Strategic Partnership (LSP) Thematic Groups report.

5. HEALTH AND WELLBEING

Pendle Health and Wellbeing Partnership Board

Enc. The notes of the Pendle Health and Wellbeing Partnership Board meeting held on 22nd June, 2017 are submitted for information.

6. LANCASHIRE AND SOUTH CUMBRIA SUSTAINABILITY AND TRANSFORMATION PLAN

Together a Healthier Future

Enc. The attached report provides a brief background to the Lancashire and South Cumbria Sustainability and Transformation Plan (STP) and the resulting Together a Healthier Future programme. Key findings from a recent Pendle engagement event are also submitted.

7. WORK PLAN

Enc. The Panel's Work Plan 2017/18 is submitted for information.
