

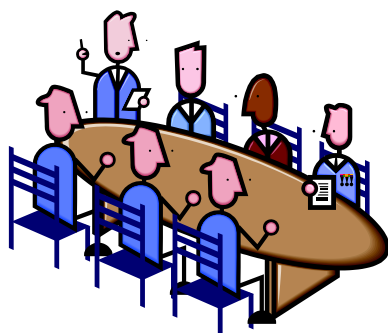


A MEETING OF THE
**HEALTH AND SOCIAL CARE
SCRUTINY PANEL**

will be held at
7.00 p.m. on Tuesday 13th December, 2016
at the Town Hall, Nelson

The Health and Social Care Panel considers issues which affect the health and social care of people in Pendle and seeks improvements where necessary.

Members of the public may speak at the meeting. You should try to make your request in writing or by telephone by 12 noon on the day of the meeting. If you are unable to do this however, the Chairman may still allow you to speak if you turn up at the meeting.



**For further information please contact
Committee Services on 01282 661648**

SUPPLEMENTAL AGENDA FOR A MEETING OF THE HEALTH AND SOCIAL CARE SCRUTINY PANEL 13TH DECEMBER, 2016

2. EXTENDED ACCESS TO PRIMARY CARE

At the June 2016 meeting of this Panel, Members received a presentation on proposals to improve access to GP services in East Lancashire. A consultation on the proposals closed on 8th July.

A representative of East Lancashire Clinical Commissioning Group will attend the meeting to present on the results of the consultation and the next steps for delivery of a new model.