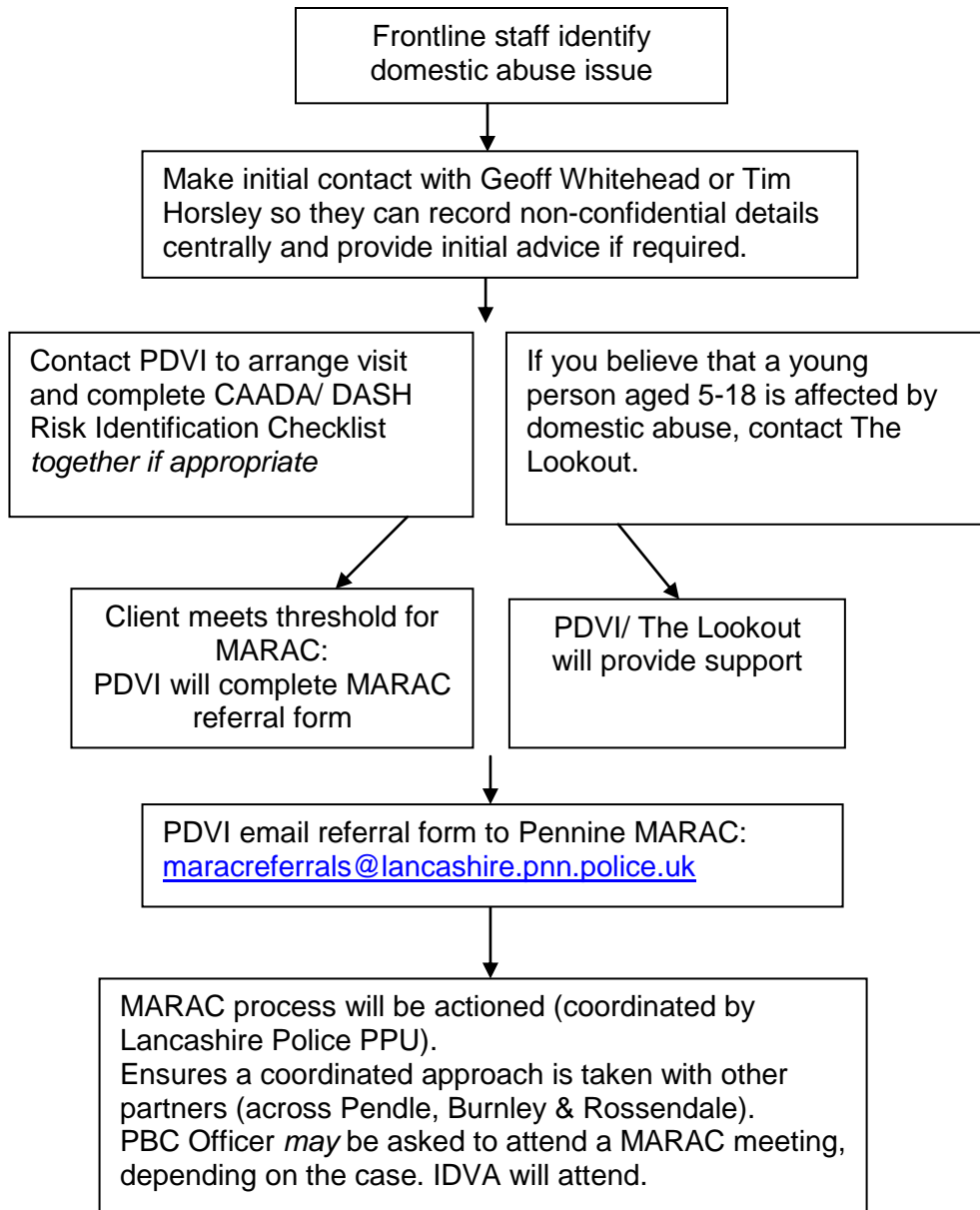


If any immediate risks are identified, contact the Police or Social Care on 0300 123 6720



PBC Policy support:
Geoff Whitehead: ext. 1660
Tim Horsley: ext. 1280

Domestic Abuse Service Manager for 'PDVI' and 'The Lookout'
Jen Gore 01282 726001
jen.gore@pendle-action.org.uk

Lancashire MARAC Chair
Rabiya Jiva
PPU Headquarters, Hutton
Tel. 01772 412669

Lancashire MARAC Co-ordinator
Nicola McGrath
Public Protection
Development and Compliance Unit
01772 413686
Nicola.mcgrath@lancashire.pnn.police.uk

Lancashire MARAC Co-ordinator
Danielle Fairclough
Public Protection
Development and Compliance Unit
01772 413686
danielle.fairclough@lancashire.pnn.police.uk

Key:
MARAC = Multi-Agency Risk Assessment Conference
DASH = Domestic Abuse, Stalking and Honour-based Violence (Risk Identification Checklist)
IDVA = Independent Domestic Violence Advisor
PDVI = Pendle Domestic Violence Initiative
PPU = Public Protection Unit