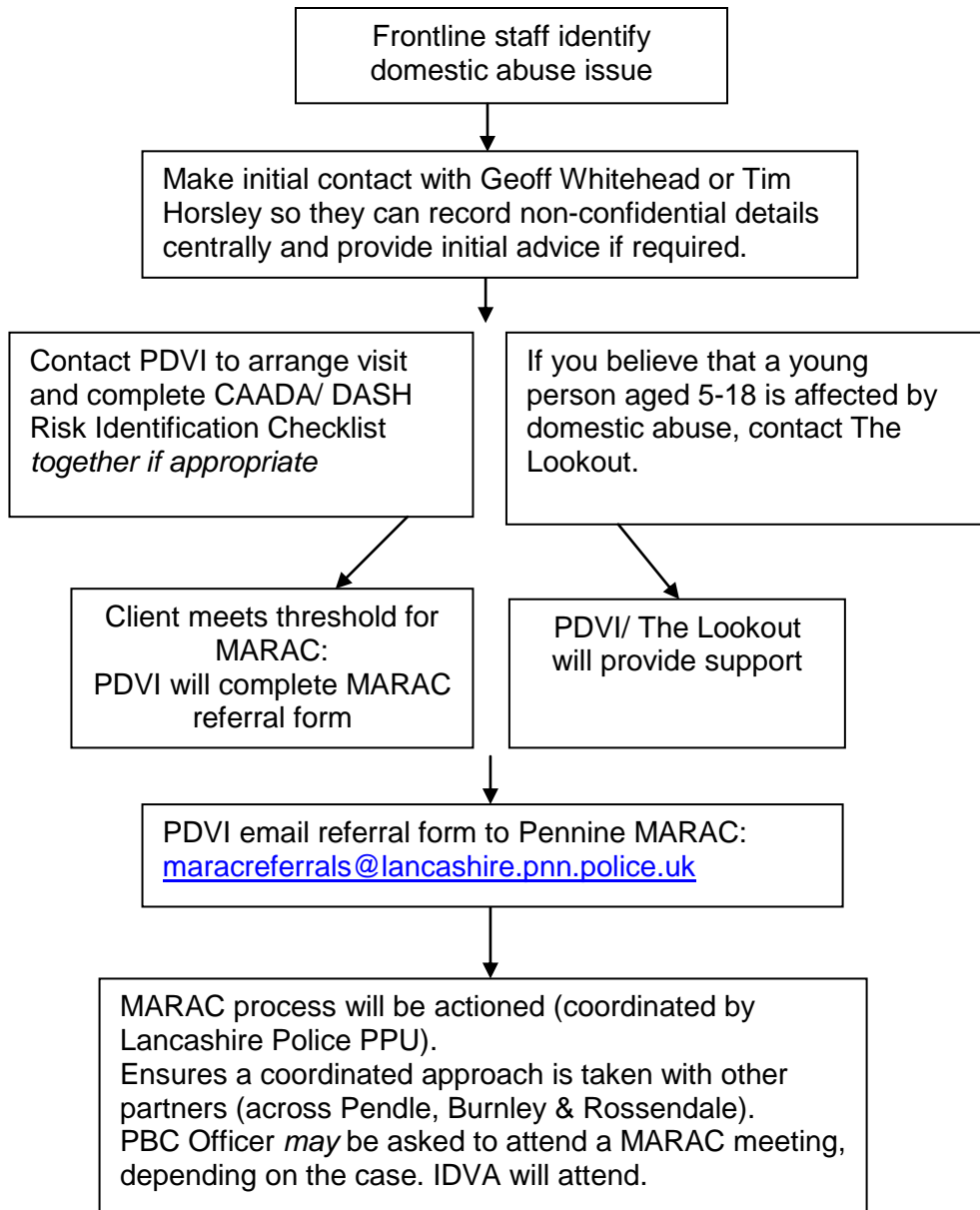


**If any immediate risks are identified, contact the Police or Social Care on 0300 123 6720**



**PBC Policy support:**  
Geoff Whitehead: ext. 1660  
Tim Horsley: ext. 1280

**Domestic Abuse Service Manager for 'PDVI' and 'The Lookout'**  
Jen Gore 01282 726001  
[jen.gore@pendle-action.org.uk](mailto:jen.gore@pendle-action.org.uk)

**Lancashire MARAC Chair**  
Rabiya Jiva  
PPU Headquarters, Hutton  
Tel. 01772 412669

**Lancashire MARAC Co-ordinator**  
Nicola McGrath  
Public Protection  
Development and Compliance Unit  
01772 413686  
[Nicola.mcgrath@lancashire.pnn.police.uk](mailto:Nicola.mcgrath@lancashire.pnn.police.uk)

**Lancashire MARAC Co-ordinator**  
Danielle Fairclough  
Public Protection  
Development and Compliance Unit  
01772 413686  
[danielle.fairclough@lancashire.pnn.police.uk](mailto:danielle.fairclough@lancashire.pnn.police.uk)

**Key:**  
MARAC = Multi-Agency Risk Assessment Conference  
DASH = Domestic Abuse, Stalking and Honour-based Violence (Risk Identification Checklist)  
IDVA = Independent Domestic Violence Advisor  
PDVI = Pendle Domestic Violence Initiative  
PPU = Public Protection Unit