



A MEETING OF THE

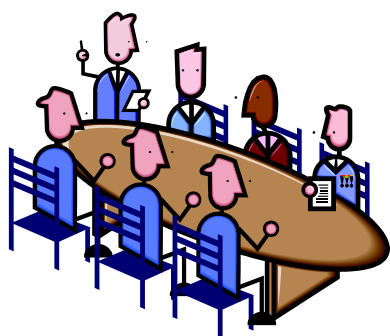
HEALTH AND SOCIAL CARE SCRUTINY PANEL

will be held at

**7.00 p.m. on Tuesday 24th February, 2015
at the Town Hall, Nelson**

The Health and Social Care Panel considers issues which affect the health and social care of people in Pendle and seeks improvements where necessary.

Members of the public may speak at the meeting. You should try to make your request in writing or by telephone by 12 noon on the day of the meeting. If you are unable to do this however, the Chairman may still allow you to speak if you turn up at the meeting.



**For further information please contact
Committee Services on 01282 661648**

Under the Openness of Local Government Bodies Regulations 2014, people attending open meetings can film, audio record, take photographs or use social media. Oral commentary is not allowed during meetings as it would be disruptive. If you are attending a meeting, you need to be aware that you may be filmed by others attending. This is not within our control.

AGENDA FOR A MEETING OF THE HEALTH AND SOCIAL CARE SCRUTINY PANEL 24TH FEBRUARY, 2015

1. MINUTES

Enc. The minutes of a meeting of the Panel, held on 13th January, 2015 are submitted for information.

2. SCRUTINY REVIEW OF DISTRICT NURSE PROVISION

(i) Airedale NHS Foundation Trust

Ann Wagner of Airedale NHS Foundation Trust will attend the meeting to deliver a presentation on “Right Care”, the Trust’s community outreach service.

(ii) Update from the East Lancashire Clinical Commissioning Group (ELCCG) and East Lancashire Hospitals Trust (ELHT)

To receive the response of the ELCCG and ELHT to outstanding issues raised at the last meeting and an update from the Transformation Partnership. **(To follow)**

3. CLINICAL COMMISSIONING GROUP – UPDATE

To receive an update from the newly appointed Pendle Locality Clinical Lead, Dr. Stuart Berry.

4. PUBLIC HEALTH UPDATE

Enc. To receive the attached update from Dianne Gardner, Specialist in Public Health (East Locality) at Lancashire County Council, on recent public health activity in Pendle.

5. SOCIAL CARE COMPLAINTS

Further to the decision of the Panel at its last meeting, the Scrutiny Manager will provide an update on ways in which the film that was made during the course of the joint review of the Adult Social Care Complaints Procedure has been used.

6. CHANGING PLACES

The Scrutiny Manager will provide an update on progress in finding a suitable location for a Changing Places toilet in Pendle.
