

## Emergency Food Support

### West Craven Food Bank

Food parcels available for delivery on request – serving those who live in Barnoldswick, Earby, Salterforth and Kelbrook. Telephone: **07415 186651**. Line open on Wednesdays **1pm – 5pm and Thursday 8am – 5pm**.

Website: [wcravenfoodbank.org](http://wcravenfoodbank.org) Email: [wcravenfood@gmail.com](mailto:wcravenfood@gmail.com)

Food parcel deliveries take place on Thursday morning.

### St John with St Phillips Church, Leeds Road, Nelson, BB9 9XB

Tuesday **11am-1pm**. Church foodbank is open from 10am for soup and a hot drink – everyone is welcome.

Monday evenings – Lighthouse café – 2 course meal for those in need of support living in Nelson, Bradley and Barrowford.

### Salvation Army Church, Stanley Street, Nelson, BB9 7EL

Salvation Army operate a basic emergency food bank on Tuesdays and Friday from **2pm – 3pm**. Luncheon club every Thursday from **12.30pm – 1.30pm**

### Christ Church, Carr Road, Nelson, BB9 7EN

Christ Church offers a community food pantry from 1pm until 3pm on Wednesdays. Come along for access to a warm and welcome space, have a brew and meet your household needs for £4 per shop.

[www.burnleyandpendlemethodistcircuit.com/christ-church](http://www.burnleyandpendlemethodistcircuit.com/christ-church)

Email: [aandjparker@gmail.com](mailto:aandjparker@gmail.com)

### Brierfield Methodist Church, Colne Road, Brierfield, BB9 5NS

Food bank is open from **10.30am-11.45am** every Thursday.

Food bank is sustained by food donations and monetary donations through the Church.

## Warm and welcome space and extended family support

### Pendle Family Hubs

Warm and welcome spaces continue to be open across all of our centres. You can help yourself to a drink, toast, soup and/or porridge.

See [www.lancashire.gov.uk/children-education-families/family-hubs](http://www.lancashire.gov.uk/children-education-families/family-hubs) or email [pendlefamiliahub@lancashire.gov.uk](mailto:pendlefamiliahub@lancashire.gov.uk) for more information

For information about support available visit [www.pendle.gov.uk/communitysupporthub](http://www.pendle.gov.uk/communitysupporthub)

# Pendle School Holiday Food Support



Funded by  
UK Government

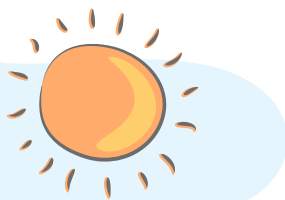
Lancashire  
County  
Council



Pendle  
Borough Council



**We understand that school holidays can put extra pressure on family budgets, especially when food costs increase and children are at home more often.**



Many families in receipt of free school meals have previously accessed school holiday food vouchers to help them through the holidays. From April 2026, national changes mean that school holiday food vouchers can no longer be provided in this way.

This change affects councils across England, including Pendle. We know this may be worrying, and we want families to know that we recognise the impact this may have on households.

Pendle Borough Council has produced this booklet to help families access practical food support during school holidays. You will find a directory of local options including community cafés, food pantries, local supermarkets, low-cost food providers and digital apps such as *Too Good To Go*.

These are local services that families can use to help reduce food costs or access free or affordable meals for children.

We also want to reassure parents and carers that support is still available for families in crisis. If you are unable to feed your family or are facing immediate hardship, you may be able to apply for a Crisis Payment delivered locally through Citizens Advice East Lancashire. Support is also available through several community organisations throughout Pendle.

Pendle Borough Council is committed to supporting families through the cost of living pressures. Please reach out early if you are struggling.

**Help is available, and this guide is here to support you.**

## Mobile App

### Too good to go app

Mobile app to connect anyone to supermarkets and restaurants that have unsold or surplus food. Customers can purchase a 'goody bag' for a set price and are allocated a time to collect. You are unable to choose what is in the bag, however, our food vendor will usually state, breakfast items, or baked goods etc.

Users must register to use the service. A mobile phone with an Internet connection running Android or iOS is needed. [www.toogoodtogo.com/en-gb](http://www.toogoodtogo.com/en-gb)

## Supermarket Café

### ASDA Colne Café

Children eat for £1 - no need for an adult to buy a meal. Available to all - see instore for opening times.

### Morrisons Café, Nelson

Children under 16 eat for free when adults purchase a meal for over £5. Available to all - see in-store for opening times.

## Community Café Emergency Food Support

### Open Door Centre, 1 Great George Street, Colne, BB8 0SY

Children eat for free all year round. Adults who are struggling can also eat for free. Centre also provides emergency food support such as food parcels tailored to your needs, and can provide toiletries and other household essentials. Attend the centre, call **01282 860342** or [www.opendoorcentre.org.uk](http://www.opendoorcentre.org.uk)

### Curry on the Street, 58 Railway Street, Nelson, BB9 9EH

Children eat for free all year round. Adults who are struggling can also eat for free. Centre also provides emergency food support such as food parcels tailored to your needs, and can provide toiletries and other household essentials. Attend the centre or visit [www.curryonthestreet.co.uk](http://www.curryonthestreet.co.uk)

### Loaves and Fishes Café, 11 Church Street, Barnoldswick, BB18 5UR

Low cost hot food and emergency food parcels. Attend the café during opening hours **Monday - Friday 9.30am - 4.30pm** or visit [www.cots-ministries.co.uk/whats-on/#barnoldswick](http://www.cots-ministries.co.uk/whats-on/#barnoldswick)

## Community Grocery

### Pendle Food For All- The Zone, Nelson, BB9 8EL

For £6 you can shop from the pantry for all of your household essentials.

Drop-In on Thursday morning from **10.30am - 12.30pm & 1pm - 2pm** (doors open from 9am for free warm drinks).

**Pendle Family Hub (The Zone), Leeds Road, Nelson, BB9 8EL.**

### St Bartholmews Community Grocery, Church Street, Colne, BB8 0LQ

For £5 you can shop from the pantry for all of your household essentials.

Open every Friday from **9.30am - 11.30am.**

Call: **07526 297991** or visit [www.achurchnearyou.com](http://www.achurchnearyou.com)