



Pendle Local Plan Fourth Edition

Publication Policies Map – Schedule of Proposed Changes

September 2025

Introduction

This document details any changes made to the Local Plan Publication Policies Map (CD/01/) that the Inspector has identified as necessary in order to ensure that the Pendle Local Plan Fourth Edition is 'sound'. It should be read alongside the Schedule of Proposed Main Modifications, Schedule of Proposed Additional (Minor) Modifications, Sustainability Appraisal Addendum and Habitats Regulations Assessment Addendum.

The Council is inviting comments on this document, as well as those above, which will then be passed onto the Inspector. The consultation runs from 9:00am Friday 12th September to 5pm Friday 24th October 2025.

Each proposed change to the Policies Map is given a MAP reference number. This reference number should be quoted in any representation made about proposed changes to the Policies Map. The proposed amendments are listed in plan order. The schedule details and illustrates the proposed amendment to the policies map. It also sets out the justification for this amendment.

Mapping Terms of Use

© Crown copyright and database rights 2025 Ordnance Survey Licence No. 100019669. You are permitted to use this data solely to enable you to respond to, or interact with, the organisation that provided you with this data. You are not permitted to copy, sub-licence, distribute or sell any of this data to third parties in any form.

Mod Ref: MAP01**Policy / Allocation / Designation**

Policy SP013 (as amended):
Transport and Connectivity

Policy Text Part 2

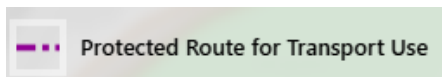
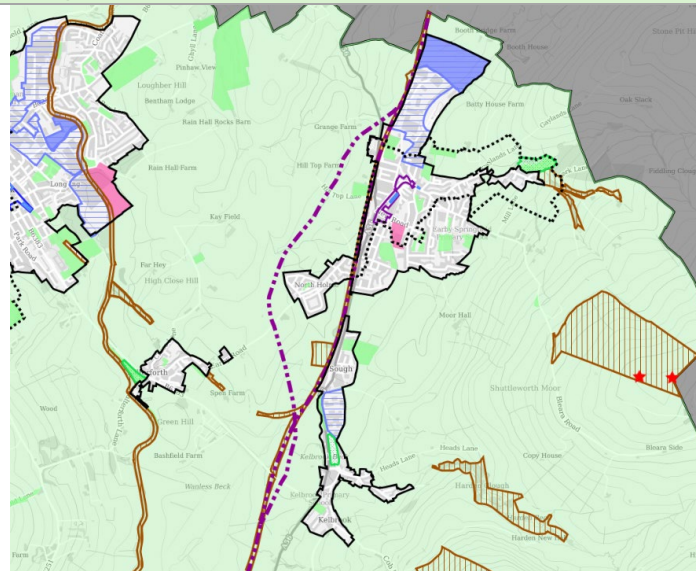
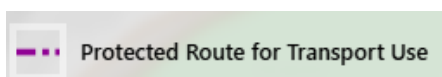
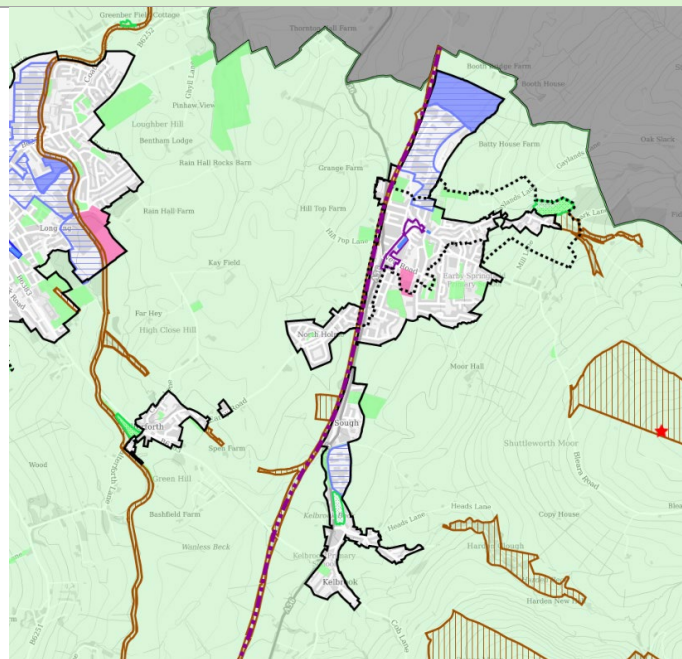
Protected Route for Transport
Use.

Detail of Change

The amendment removes
the protected transport
route shown to the west of
Earby, Kelbrook and Sough,
retaining that only of the
former Colne to Skipton
Railway Line.

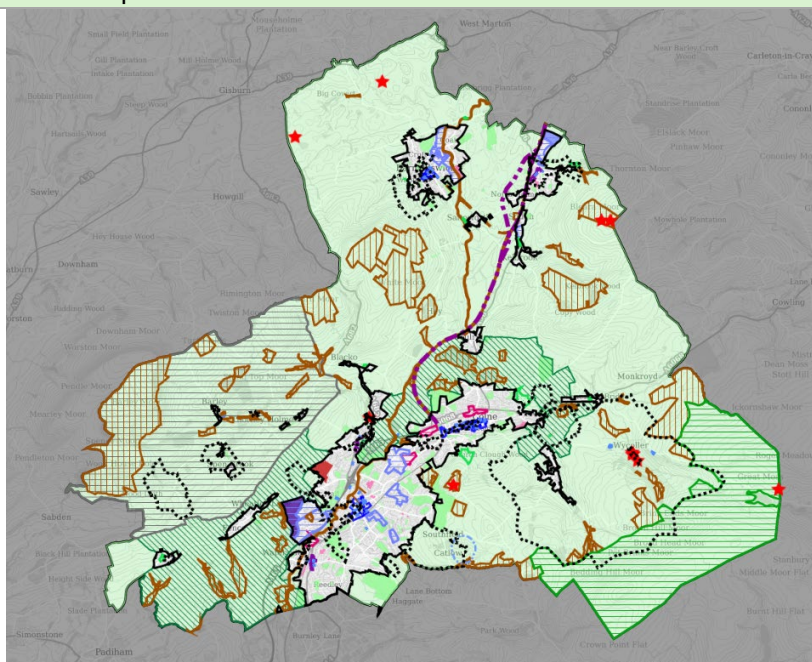
Reason for Change

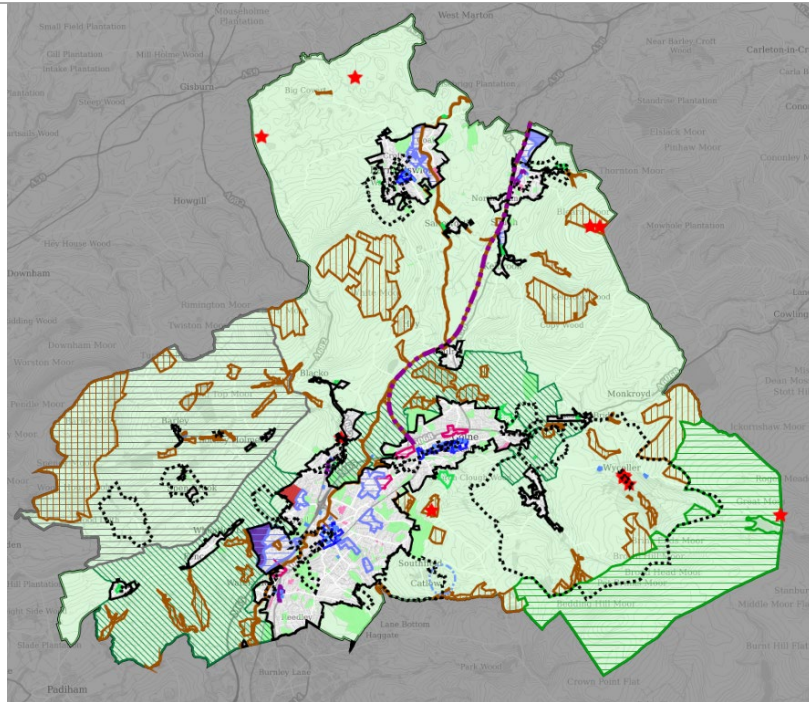
Insufficient evidence is
available to support
protecting this route during
the plan period. The
proposal as submitted is
not therefore justified.

Publication Policies Map Extract**Policies Map Revision**

Mod Ref: MAP02

Policy / Allocation / Designation	Detail of Change	Reason for Change
Policy DM06: Green Infrastructure Policy Text Part 1 Green Infrastructure Strategy	<p>The amendment inserts layers from the Green Infrastructure Strategy onto the Policies Map.</p> <p>The Green Infrastructure Strategy is incorporated as an invisible layer on the Policies Map which users will interact with when clicked on. A link will take users to a separate map which shows the Green Infrastructure Strategy in full. This will be made available to access directly from other parts of the Council's website.</p>	To show illustrate the Green Infrastructure Strategy on the Policies Map and ensure that Policy DM06 is effective.

Publication Policies Map Extract**Policies Map Revision**

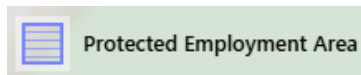
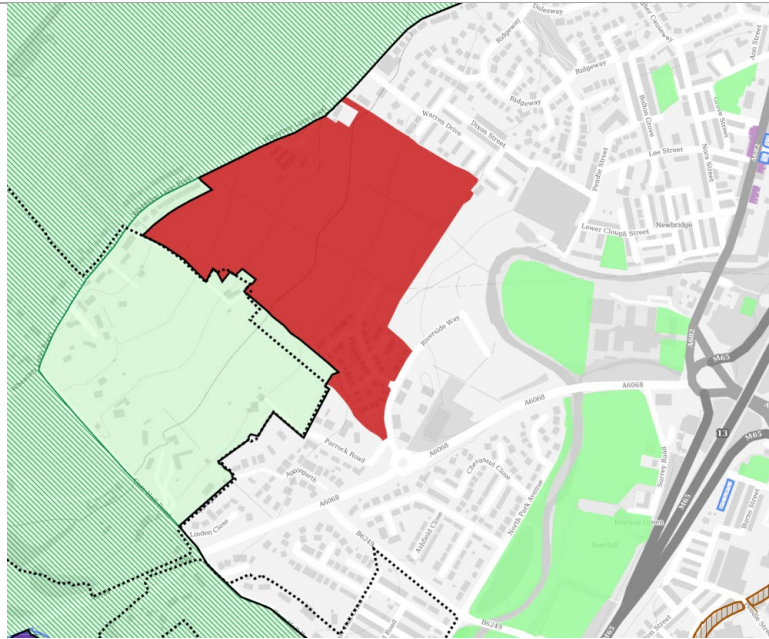


Layers not visible and show only when map is interacted with.

Mod Ref: MAP03

Policy / Allocation / Designation	Detail of Change	Reason for Change
<p>Policy DM41: Protected Employment Sites</p> <p>Policy Text Part 1 and Paragraph 7.22 of the Supporting Text</p> <p>Protected Employment Site, ID Riverside Business Park, Barrowford</p>	<p>The amendment addresses a mapping error at publication stage which missed Riverside Business Park, Barrowford as a Protected Employment Site.</p>	<p>To show Riverside Business Park as a Protected Employment Site, consistent with the evidence base (the Employment Land Review contained within 2023 HEDNA) and ensure that Policy DM41 is effective.</p>

Publication Policies Map Extract



Policies Map Revision

