

Barrowford Neighbourhood Development Plan Habitat Regulations Assessment Addendum

Alongside the SEA screening process there is a need to assess whether the Neighbourhood Plan would have an adverse impact upon internationally designated wildlife sites, as required by the European Habitats Directive.

In carrying out the screening assessment, the following requirements, as set out in the European Commission guidance have been addressed:

1. Description of the plan
2. Characteristics of the European site
3. Assessment of significance.

Stage 1: Description of the plan

The Parish

Barrowford is located within Pendle, just off junction 13 of the M65. The Parish is made up of 4 wards: Carr Hall, Newbridge, Central and Higherford. Barrowford adjoins the Trough of Bowland Area of Outstanding Beauty, which includes Pendle Hill and the villages of Barley, Roughlee and Newchurch.

The Parish Council, as a qualifying body, applied for the whole parish to be designated a neighbourhood planning area. Pendle Borough Council approved the area as a neighbourhood planning area on the 22nd October 2015. This designation allows the local community to come together, through the preparation of the neighbourhood development plan, to set out how the future development of the area up to 2030 should be shaped.

Barrowford is one of the older established towns and villages within Pendle. Historically, it relied on the textile industry for employment, and until the early 1990s, this industry was probably the town's largest employer. With the demise of textiles and the loss of large-scale employment opportunities, Barrowford has diversified into tourism and niche shopping outlets, with smaller scale manufacturing and service businesses being incorporated into the remaining former mills. The village, though large, still identifies itself as a village and seeks to retain those ideals.

Cultural heritage is a strong factor in the local character of the residents of Barrowford and their desire to retain a village identity. The Parish boasts one of the oldest Public Houses in the country, the White Bear Inn, trading since 1667. There are 34 statutory listed buildings within the Parish.

Approximately 5 kilometres to the south east of the Neighbourhood Area (at its nearest point) is the South Pennine Moors Site of Special Scientific Interest (SSSI) the largest area of unenclosed moorland in the north of England. Extensive areas of blanket bog occur on the upland plateaux and are punctuated by species rich acidic flushes and mires. There are also wet and dry heaths and acid grasslands. Three habitat types which occur on the site are rare enough within Europe to be listed on Annex 1 of the EC Habitats and Species Directive (92/43) EEC. This mosaic of habitats supports a moorland breeding bird community which, because of the range of species and number of breeding birds it contains, is designated as a Special Protection Area (SPA) in recognition of its regional, national and international importance.

The Plan

The Vision for the Barrowford is:

“In 2030 Barrowford will be a vibrant, sustainable community which embodies the feel and values of a large village with many historic features. It will comprise a wide variety of housing types suiting the needs of all sections of society and offer increased opportunities for higher paid employment. Development of niche shopping and enhanced nightlife will confirm Barrowford as a growth centre for tourism and leisure within Pendle and make it a well-known visitor destination both locally and regionally.”

The key objectives of the plan are to:

Housing – to achieve a level of new housing which is appropriate to the village and its level of public services and infrastructure.

Health, Education and Infrastructure – to provide an appropriate level of services and provision to serve the village.

Travel and Transport – to achieve better connectivity within and outside the NDP area.

Business & Retail – to support and allow for the growth of new business and retail.

Sport, Leisure & Green Space – to protect and enhance open spaces both informal and formal as assets for the community to enjoy.

Landscape & Natural Environment – to enhance and conserve the natural environment. See policies

Heritage & Conservation – to enhance and conserve heritage assets and designate Newbridge as a new character area.

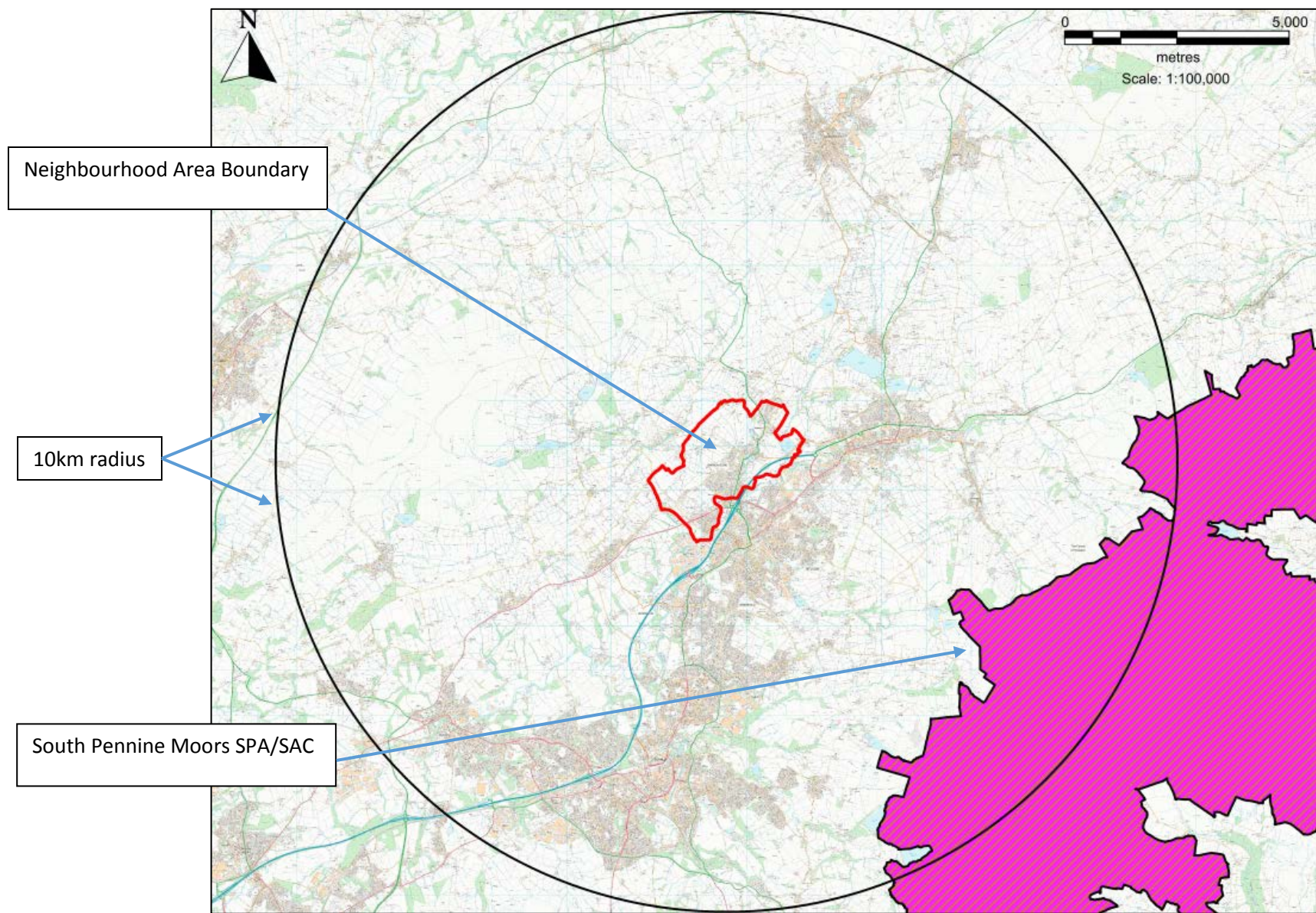
Stage 2: Characteristics of the European Site(s)

Recognising that the Barrowford Neighbourhood Plan proposes no development sites and includes a set of development management policies, HRA screening has only considered those European sites within a 10km radius of the Neighbourhood Plan area. Figure 1.

No parts of the South Pennine Moors Special Area of Conservation (SAC) and Special Protection Area (SPA) lie within the boundary of the Neighbourhood Area.

The following table considers the specific characteristics of these European Sites, outlining the reasons for their designation and identifying any particular site vulnerabilities.

Figure 1 – Barrowford Neighbourhood Area and Protected Sites



Assessment of Likely Environmental Impacts on European Sites

European Site	Reason for Designation	Conservation Objectives	Site Vulnerability
South Pennine Moors SAC [UK0030280]	<p>Features that are the primary reason for selection include the presence of European dry heath (4030), blanket bog (7130), old sessile oak woods with <i>Ilex</i> and <i>Blechnum</i>, (91A0).</p> <p>Qualifying features that are not a primary reason for selection include northern Atlantic wet heaths with <i>Erica tetralix</i> (4010) and transition mires and quaking bogs (7140).</p>	<ul style="list-style-type: none"> To maintain the current extent of blanket bog habitats. For there to be no loss of ancient semi natural woodland stands. To maintain the current extent of dry heath habitats. To maintain the current extent of wet heath habitats. 	<ul style="list-style-type: none"> Recreational pressure resulting in physical damage to habitats, trampling, erosion, fragmentation and accidental fires. Overgrazing by sheep can result in direct damage to vegetation and burning as a tool for grouse moor management can cause habitat damage. Heathland and blanket bog are vulnerable to changes in hydrological conditions such as agricultural drainage causing changes in the water table. Nitrogen enrichment from air pollution can lead to changes in the vegetation while the application of fertilisers and pesticides can also potentially damage habitats.
South Pennine Moors SPA [UK9007021]	<p>Supports breeding populations of golden plover <i>Pluvialis apricaria</i>, merlin <i>Falco columbarius</i>, short eared owl <i>Asio flammeus</i> (Article 4.1 of 79/409/EEC) and dunlin <i>Calidris alpina schinzii</i> (Article 4.2 of 79/409/EEC)</p>	<p>To maintain the mosaic of upland habitats including acid grassland, bog, bracken, heathlands, fen, rivers and streams. The extent of these habitats should be maintained unless loss is as a result of restoration to another notified habitat type.</p>	<ul style="list-style-type: none"> Habitat Loss - Breeding bird species are susceptible to habitat loss and degradation. This could be caused by many factors including recreational pressure, overgrazing, poor management and hydrological changes. Agricultural intensification around the edge of the moors can result in a reduction in feeding habitat for birds. Increased visitor numbers also have the potential to lead to a rise in nesting

Stage 3: Assessment of Significance

The intention is for the Barrowford Neighbourhood Plan to reinforce the Pendle Local Plan Core Strategy 2011-2030 by ensuring that development takes place in a sustainable manner and that key natural and built heritage assets of the area are protected. As such it is unlikely to increase the vulnerability of any European Sites through pollution, visitor disturbance and/or recreation (see table below).

European Site	Vulnerabilities				
	Habitat Loss	Impact on Protected Species	Air Quality	Water Quality and Quantity	Invasive Species
South Pennine Moors SAC [UK0030280]	The Barrowford Neighbourhood Plan: <ul style="list-style-type: none"> Allocates no sites for development and will therefore not have an adverse effect on the integrity of the European Site due to housing or other development. Sets development management criteria for new housing development within the defined settlement boundaries. 				
South Pennine Moors SPA [UK9007021]					
	<ul style="list-style-type: none"> Includes policies to support appropriate development of local business. Designates new Local Green Space, which help to conserve and enhance local biodiversity. Includes policies to protect landscape views and green infrastructure. 				

It is recognised that both Merlin *Falco columbarius* and Golden Plover *Pluvialis apricaria* spend some of their time feeding outside the SPA on adjacent areas of land. The Barrowford Neighbourhood Plan proposes no development that will impact on areas of land that are likely to be used for this purpose.

HRA Screening Conclusion

The results of the assessment suggest that Barrowford Neighbourhood Plan is unlikely to have any significant effect on the European Sites identified and that a full Appropriate Assessment is not required.