





# Collection Calendar 2023/24

Your bin collection day is Tuesday

	 General waste	 Glass / plastic / cans / foil	 Paper and cardboard	 Garden waste
Dec 2023	5 / 19	27	12	
Jan 2024	3 / 16 / 30	23	9	
Feb 2024	13 / 27	20	6	
Mar 2024	12 / 26	19	5	5 / 19
Apr 2024	9 / 23	16	2 / 30	2 / 16 / 30
May 2024	7 / 21	14	28	14 / 28
June 2024	4 / 18	11	25	11 / 25
July 2024	2 / 16 / 30	9	23	9 / 23
Aug 2024	13 / 27	6	20	6 / 20
Sept 2024	10 / 24	3	17	3 / 17
Oct 2024	8 / 22	1 / 29	15	1 / 15 / 29
Nov 2024	5 / 19	26	12	12 / 26



**Please note:**

Change of day due to Christmas and New Year holidays.

Separating your waste for recycling is a legal requirement. Failure to do so could lead to legal action being taken under **Section 46 of the Environmental Protection Act 1990.**

Graphic Design by Pendle Council Communications Team. ijb 12443 10/23

**IMPORTANT PLEASE READ AND KEEP**

# Pendle recycles

**YOUR BIN  
COLLECTION DAY IS  
TUESDAY**

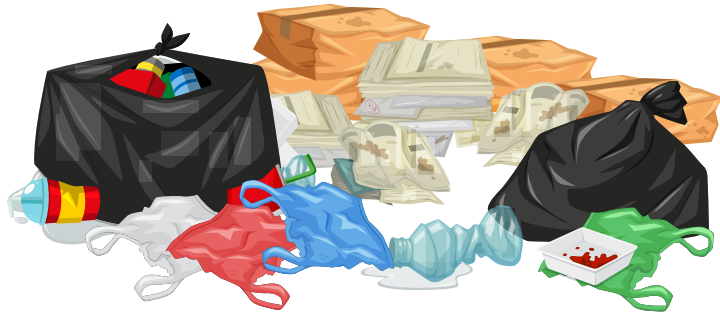
Your **2023/24**  
recycling & refuse  
collections  
calendar



**Zone 7**

[www.pendle.gov.uk/recyclingandrefuse](http://www.pendle.gov.uk/recyclingandrefuse)  
01282 661661





# BIN IT DON'T DUMP IT!

For information of what and where, visit  
[www.pendle.gov.uk/binit](http://www.pendle.gov.uk/binit)

**REMEMBER!** If you are caught fly-tipping **YOU WILL BE FINED!**

## Garden Waste

Subscribe to our Garden Waste Scheme. Collections are fortnightly. They start in July, but do **NOT** take place in December, January and February and then resume in March. Sign up to the Garden Waste Scheme: [www.pendle.gov.uk/gardenwaste](http://www.pendle.gov.uk/gardenwaste)

## Bulky Waste Collection

Items such as furniture (beds, sofas) and white goods (washing machines, cookers, fridges and freezers) can be removed as part of our Bulky Household Waste Collection Service.

We also provide a collection service for DIY items such as doors, bathroom suites, kitchen units, bags of household waste, timber, bricks and rubble for both domestic and commercial customers.

There is a charge for this. Find out more here:  
[www.pendle.gov.uk/bulkywaste](http://www.pendle.gov.uk/bulkywaste)

Use your local Household Waste Recycling Centre to dispose of a wide range of materials, including electronic equipment and fuel. There is one in Barnoldswick and one in Burnley. Find out more here:  
[www.lancashire.gov.uk/waste](http://www.lancashire.gov.uk/waste)



## WHICH BIN DO I USE?



**NO PLASTIC BAGS**

**NO PLASTIC BAGS**

**NO PLASTIC BAGS**

## CHRISTMAS TREES

Recycle your real tree at your local Household Waste Recycling Centre or put it out with your grey bin on your January collection day.



## HOUSEHOLD BATTERIES ONLY

Put used batteries in a clear plastic bag and leave **ON TOP OF THE LID OF YOUR BLUE or BROWN RECYCLING BIN** on your recycling day.

**DO NOT PUT INSIDE YOUR BIN.**

