

Pendle Borough Council

Habitat Regulations Assessment Screening Report

Local Development Framework Core Strategy
Preferred Options

December 2010

Introduction

1. The purpose of a Habitat Regulations Assessment is to assess the impacts of a land use plan or project against the conservation objectives of a European Site. The assessment must determine whether the plan would adversely affect the integrity of the site in terms of its nature conservation objectives.
2. Following the European Court Judgement (ECJ) of 20th October 2005 Habitat Regulations Assessments must now be prepared for land use planning documents within the UK where these have implications for sites designated as a **Special Protection Area (SPA)**, a **Special Area of Conservation (SAC)** or under Regulation 10 of the 1994 Habitat Regulations and hereafter referred to as **European Sites**.
3. The need to consider whether an Habitat Regulations Assessment is required arises because Pendle Borough has a part of a European Site within its boundary and several others close by outside its boundary. The Pendle Borough Council emerging **Core Strategy Preferred Options Development Plan Document** is not directly connected with or necessary for the management of the sites for nature conservation purposes. The precautionary principle requires that the conservation objectives of Natura 2000¹ should prevail where there is uncertainty. Accordingly, there is a possibility that the emerging Pendle Borough Council Core Strategy Preferred Options DPD may, either alone or in combination with Plans or Projects including those in other districts, have a significant effect upon a European Site.

Methodology

4. Guidance on the methodology for appropriate assessments is contained within PPS9: "Biodiversity and Geological Conservation" and the accompanying Circular 06/2005: "Biodiversity and Geological Conservation – Statutory Obligations and their impact within the planning system". However, this advice predates the ECJ judgement and therefore reflects the application of the Habitats Directives to plans and projects as determined by the UK government rather than that required by the October 2005 judgement.
5. The Department for Communities and Local Government has recently produced draft guidance on the application of the Habitats Directive to Development Plans. Whilst regard will be had to "Planning for the Protection of European sites: Appropriate Assessment Guidance for Regional Spatial Strategies and Local Development Documents" August 2006, at this time that document is not considered to properly reflect the process that should be followed. In particular that document fails to properly address screening which may obviate the need for an Appropriate Assessment.
6. The EC publication "Assessment of plans and projects significantly affecting Natura 2000 sites – Methodological guidance on the provisions of Article 6(3) and (4) of the Habitats Directive 92/43/EEC" (November 2001) is a comprehensive approach to Appropriate Assessment. Again this guidance is aimed at projects rather than land use or development plan documents.

¹ Natura 2000 is a project by the European Union and each of its member states to protect the environment. The title refers to the network of areas designated to conserve natural habitats and species of wildlife which are rare, endangered or vulnerable in the European Community. The term Natura 2000 comes from the 1992 EC Habitats Directive, it symbolises the conservation of precious natural resources for the year 2000 and beyond.

7. Regard will also be had to The Conservation of Habitats and Species Regulations 2010 in so far as these are current UK government guidance on the application of the Habitats Directive.

8. The Habitats and Species Regulations 2010 paragraph 61 requires that:

"61.—(1) A competent authority, before deciding to undertake, or give any consent, permission or other authorisation for, a plan or project which-

(a) is likely to have a significant effect on a European Site or a European offshore marine site (either alone or in combination with other plans or projects), and

(b) is not directly connected with or necessary to the management of that Site,

must make an appropriate assessment of the implications for that Site in view of that Site's conservation objectives."

9. Paragraph 22 of Circular 06/2005 allows a Planning Authority to consider issuing a consent for a project in accordance with Paragraph 48 of Habitat Regulations (now paragraph 61 of Habitats and Species Regulations 2010) subject to conditions or other restrictions which ensure that Site integrity is not adversely affected. PPS 22 and its companion guide set out the circumstances where planning permission may or may not be granted for renewable energy development where it is likely to have an adverse effect on a European Site.

10. European guidance on Habitat Regulations Assessment (HRA) recommends a process of up to four stages:

- a) **Screening.** Determining whether the plan 'in combination' is likely to have a significant effect on a European Site.
- b) **Appropriate Assessment.** Determining whether, in view of the European Site's conservation objectives, the plan 'in combination' would have an adverse effect (or risk of this) on the integrity of the Site. If not, the plan can proceed.
- c) **Assessment of alternative solutions.** Where the plan is assessed as having an adverse effect (or risk of this) on the integrity of a European Site, there should be an examination of alternatives.
- d) **Assessment where no alternative solutions** remain and where adverse impacts remain.

This document addresses the first step in the above four stage process.

Screening

11. Screening comprises four steps :

- a) Determining whether the plan or project is directly connected with or necessary for the management of a European Site.
- b) Describing the project or plan and any others that in combination have the potential to significantly affect a European Site.
- c) Identifying the potential effects on a European Site.
- d) Assessing the significance of any effects.

12. Screening is a rough sieve to identify a short-list of European Sites which the emerging Pendle Borough Council Core Strategy Preferred Options DPD could possibly affect. Elements of the DPD which, either alone or 'in combination', may affect a Site are then screened against the features of interest of the short-listed Sites. This process enables those elements of the DPD which will not have a likely significant effect to be 'screened out', and identifies those elements of the DPD for which avoidance or mitigation will be required. Measures to enable avoidance of, or mitigation for, any likely significant effect can then be incorporated into the DPD at this stage by, for example, changing policy wording, and therefore no further assessment will be required at this stage.

Step a) Determining whether the plan or project is directly connected with or necessary for the management of a European Site

13. This part of the screening process is more readily applicable to site specific projects. However, it is the case that the Core Strategy Preferred Options DPD is not directly connected with or necessary for the management of a European Site though policies in it may be applicable to European Sites. Such policies however are for the benefit and protection of such European Sites.

Sites which may be affected.

14. European Sites (Natura 2000 sites) are **Special Protection Areas** (SPA) classified under the EC Birds Directive 1979, **Special Areas of Conservation** (SAC) and candidate Special Areas of Conservation (cSAC) designated under the EC Habitats Directive 1992. **Ramsar** sites are wetlands of international importance designated under the Ramsar Convention. Natural England advises that as a matter of policy, the Government expects public authorities to treat all Ramsar Sites and potential SPA's (pSPA) as if they were fully designated European Sites for the purposes of considering development proposals that may affect them (PPS 9 para 6).

15. There are five European Sites which may be affected by the Core Strategy Preferred Options DPD. The Sites were identified in consultation with Natural England and using selection criteria such as distance from Borough boundary and connectivity eg water courses. Some of the Sites comprise two different designations (such as SPA and SAC) and are shown on **maps at Appendix 1** and in the table below:

Site name	Designation	Distance (Km)
South Pennine Moors Phase 2	SPA	Within Borough
South Pennine Moors	SAC	Within Borough
Ribble and Alt Estuaries	SPA	38.4
Ribble and Alt Estuaries	Ramsar	38.4
North Pennine Moors	SAC	10.8
North Pennine Moors	SPA	10.8
North Pennine Dales Meadows	SAC	13.2
Bowland Fells	SPA	17.0

[Distances are measured from Borough boundary to nearest boundary of site]

Step b) Describing the project or plan and any others that in combination have the potential to significantly affect a European Site

16. The **Core Strategy Preferred Options** follows on from the **Issues and Options DPD**. The Issues and Options document was taken through the Habitat Regulations Assessment Screening process in April 2008 and the conclusion, confirmed by Natural England, was that it was not likely to have a significant effect upon a European Site but that further Habitat Regulations Assessment would be required at subsequent DPD stages of the LDF process. This report fulfils that further assessment requirement for the next stage of the LDF.
17. The Preferred Options DPD is the next stage and contains the Spatial Vision which leads to eleven Strategic Objectives which guided the preparation of Spatial Strategy which includes detailed Spatial Policies. The policies have been written to ensure that the Strategic Objectives as well as the eight Sustainable Community Strategy Priority Goals are met. The Core Strategy does not include site specifics which will be in the Land-Use Allocations DPD and in any Area Action Plan DPD's which may be prepared. Where appropriate, more detailed policies will be provided in subsequent DPDs and Supplementary Planning Documents (SPDs) which will have to be subject to their own Habitat Regulations Assessment. The Core Strategy main role is to set out strategic guidance and principles for development across the Borough.

Table 1. Description of Proposal	
Location	Borough wide.
Distance from designated boundary	Only one of these Sites, the South Pennine Moors SAC/SPA, is within the Borough boundary and it is only a small northern portion (9.1%) of the Site. Others range in distance from 10.8 to 38.4 Km measured from Borough boundary to nearest boundary of Site.
Site (Borough) area	169.52 Km ²
Brief Description	<p>A copy of the Local Development Framework Core Strategy Preferred Options document is appended.</p> <p>This document sets out for consultation the Preferred Options available to Pendle Borough Council in its final Core Strategy DPD and contains the Spatial Vision which leads to eleven Strategic Objectives which guided the preparation of Spatial Strategy which includes detailed Spatial Policies. The policies have been written to ensure that the Strategic Objectives as well as the eight Sustainable Community Strategy Priority Goals are met. This is the penultimate stage of the Local Development Framework process before it is submitted to the Secretary of State. Government guidance dictates the process through which our various evidence bases are evaluated.</p>
Is the proposal directly connected with or necessary to the management of a European Site?	No, though Options in it may be applicable to European Sites. Such Options however are for the benefit and/or protection of the Sites. Some Options have incidental benefits for some Sites.

18. The Core Strategy Preferred Options Strategic Objectives and Spatial Strategy are at Appendix 2. Other plans or projects which were considered 'in combination' are shown at Appendix 3.

Step c) Identifying the potential effects on a European Site

19. This step should be undertaken in stages. Firstly, the European Sites as listed at paragraph 15 above should be described and their condition assessed (see table 2 below). Secondly, because Habitat Regulations Assessment should determine whether, in view of the site's conservation objectives, a plan or project is likely to affect the site, the conservation objectives should be identified for each site (see table 3 below). The source-pathway-receptor approach is used to assess whether an activity will have a likely significant effect on a site's conservation objectives. The information in tables number 2 and 3 is taken from Joint Nature Conservation Committee and Natura 2000 data forms.

Table 2. Description of European Site	
Name	South Pennine Moors SAC and SPA
Unitary Authority/County	Lancashire County Council, North Yorkshire, West Yorkshire and Greater Manchester
Site Description	<p>SAC: The site covers the key moorland blocks of the Southern Pennines from Ilkley Moor in the north to the Peak District in the south. The moorlands are on a rolling dissected plateau formed from rocks of Millstone Grit at altitudes of between 300 and 600 metres and a high point of over 630 metres at Kinder Scout. The greater part of the gritstone is overlain by blanket peat with the coarse gravely mineral soils occurring only on the lower slopes. The moorlands as a whole support a breeding bird community of national and international importance.</p> <p>SPA: The site is the largest unenclosed moorland within West Yorkshire and contains the most diverse and extensive examples of upland plant communities in the county. Extensive areas of blanket bog occur on the upland plateaux and are punctuated by species rich acidic flushes and mires. There are also wet and dry heaths and acid grasslands.</p>
Qualifying features	<p>SAC: The site hosts the following habitats listed in Annex I under article 4(4) of the Directive (92/43/EEC): Blanket bogs; European dry heaths; Northern Atlantic wet heaths with <i>Erica tetralix</i> (wet heathland with cross-leaved heath); Old sessile oak woods with <i>Ilex</i> and <i>Blechnum</i> in the British Isles (western acidic oak woodland) and Transition mires and quaking bogs (very wet mires often identified by an unstable 'quaking' surface).</p> <p>SPA: Three habitat types which occur on the site are rare enough within Europe to be listed on Annex I of the EC Habitats and Species Directive (92/43)EEC. These communities are typical of and represent the full range of upland vegetation classes found in the South Pennines. This mosaic of habitats supports a moorland breeding bird assemblage which, because of the range of species and number of breeding birds it contains, is of regional and national importance. The large numbers of breeding Merlin (<i>Falco columbarius</i>), Golden Plover (<i>Pluvialis apricaria</i>) and Twite (<i>Carduelis flavirostris</i>) are of international importance.</p>
Non-Qualifying species of interest	
Unit size	SAC: 64983.13 hectares. SPA: 21049.95 hectares
Condition	Maintenance of the eco-systems on which the birds depend relies on appropriate grazing levels and burning regimes, and overgrazing by sheep is a key pressure. Management of grazing is further complicated by the presence of a large number of commons within the SPA. Pressures outside the site, in particular the loss of bird feeding areas through agricultural intensification, increase the vulnerability of the bird populations. Status of units within the Pendle boundary is Unfavourable Recovering as assessed by Natural England (compiled November 2010).
83.67% of total site meets Public Service Agreement target	

Name	North Pennine Moors SAC and SPA
Unitary Authority/County	Lancashire County Council and North Yorkshire County Council
Site Description <u>Comprises these SSSI's:</u> West Nidderdale, Barden and Blubberhouses Moors	SAC: The site covers the key moorland blocks of the Northern Pennines from Embsay Moor in the south through the Yorkshire Dales to Cumbria and Northumberland in the north. SPA: The site is largely heather moorland, either as blanket bog or drier heathland, with smaller associated areas of wetland, grassland, bracken, scrub, woodland and cliff. The habitats and qualifying breeding bird populations are mostly dependant upon stock grazing and burning at sympathetic levels.
Qualifying features	SAC: The site hosts the following habitats listed in Annex I under article 4(4) of the Directive (92/43/EEC): Blanket bogs (priority feature); Petrifying springs with tufa formation (priority feature); European dry heaths; Juniperus communis formations on heaths or calcareous grasslands; Siliceous rocky slopes with chasmophytic vegetation and Old sessile oak woods with Ilex and Blechnum in the British Isles (western acidic oak woodland). SPA: During the breeding season the area regularly supports Hen Harrier (Circus cyaneus) 2.2% of the GB breeding population, Merlin (Falco columbarius) 10.5%, Peregrine (Falco peregrinus) 1.3% and Golden Plover (Pluvialis apricaria) at least 6.2%.
Non-Qualifying species of interest	
Unit size	SAC: 103109.42 hectares. SPA: 147246.41 hectares
Condition 68.20% meets PSA target	The habitats and qualifying breeding bird populations are mostly dependant upon stock grazing and burning at sympathetic levels. Over-grazing, over-burning and other forms of intensive agricultural or sporting management eg drainage may be damaging.

Name	North Pennine Dales Meadows SAC
Unitary Authority/County	Lancashire County Council and North Yorkshire
Site Description <u>Comprises these SSSI's:</u> Bell Sykes Meadows, Langcliff Cross Meadow and Myttons Meadows	SAC: A series of isolated fields within several north Pennine and Cumbrian valleys. The site encompasses the range of variation exhibited by mountain hay meadows in the UK and contains the major part of the remaining UK resource of this habitat type.
Qualifying features	SAC: A wide range of rare and local meadow species are contained within the meadows, including Globeflower (Trollius europaeus), the Lady's Mantles (Alchemilla acutiloba, A. Monticola and Spiguel (Meum athamanticum). The site contains Molinia meadows on calcareous, peaty or clayey-silt-laden soils for which the area is considered to support a significant presence and mountain hay meadows for which this is one of only two known outstanding localities in the UK and which is considered to be rare as its total extent in the UK is estimated to be less than 1000 hectares.
Non-Qualifying species of interest	
Unit size	SAC: 497.09 hectares.
Condition Bell Sykes Meadows, Langcliff Cross Meadow and Myttons Meadows 100%, 100% & 90.02% respectively meets PSA target	These grasslands are dependant upon traditional agricultural management, with hay-cutting and no or minimal use of agro-chemicals. Such management is no longer economic.

Name	Bowland Fells SPA
Unitary Authority/County	Lancashire County Council
Site Description	SPA: The site is upland fell comprising mostly heath and scrub (50%) with bogs, marshes, water fringed vegetation and fen (30%); dry grassland (19.9%) and broad-leaved deciduous woodland (0.1%).
Qualifying features	SPA: The expansive blanket bog and heather dominated moorland provides suitable habitat for a diverse range of upland breeding birds. Under Article 4.1 during the breeding season the area regularly supports 1.3% of the GB breeding population of Hen Harrier (Circus cyaneus) and 1.5 % of the GB breeding population of Merlin (Falco columbaris). Under Article 4.2 during the breeding season the area regularly supports 7.6% of the GB breeding population of Lesser Black-backed Gull (Larus fuscus).
Non-Qualifying species of interest	
Unit size	SPA: 16002.31 hectares
Condition 97.16% meets PSA target	Favourable nature conservation status of the site depends on appropriate levels of sheep grazing, sympathetic moorland burning practice, sensitive water catchment land management practices and on going species protection.

Name	Ribble and Alt Estuaries SPA and Ramsar
Unitary Authority/County	Lancashire County Council and Merseyside
Site Description	<p>SPA: Habitat classes comprise tidal river and estuary with mud flats, sand flats and lagoons (82%); salt marshes, salt pastures and salt steppes (17%) and bogs, marshes, water fringed vegetation and fen (1%).</p> <p>Ramsar: A large area including two estuaries which form part of the chain of west coast sites which fringe the Irish Sea. The site is formed by extensive sand and mudflats backed, in the north, by the salt marsh of the Ribble Estuary and, to the south, the sand dunes of the Sefton Coast.</p>
Qualifying features	<p>SPA: Under Article 4.1 and 4.2 qualification, the area supports a range of birds either for the breeding season, for over-wintering, on passage or assemblage.</p> <p>Ramsar: The tidal flats and salt marsh support internationally important populations of waterfowl in winter and the sand dunes support vegetation communities and amphibian populations of international importance.</p>
Non-Qualifying species of interest	
Unit size	SPA: 12412.31 hectares Ramsar: 13464.10 hectares.
Condition 95.31% meets PSA target	<p>Overall, the dunes, intertidal flats and salt marsh enjoy a relatively robust status and a favourable condition. However, the site is, in places, subject to pressure from recreation, built development (including coastal defence), wildfowling and industry including sand-winning. Although there is little evidence of sea-level rise so far, the extent and distribution of habitats remains vulnerable to changes in the physical environment, either natural or man-made.</p>

Table 3. The Conservation Objectives of the sites	
South Pennine Moors	<p>To maintain*, in favourable condition, the habitats for the populations of Annex 1 species (Merlin, Golden Plover, Short-eared Owl) of European importance, with particular reference to:</p> <ul style="list-style-type: none"> • Upland moorland <p>To maintain*, in favourable condition, the habitats for the populations of the migratory bird species (Dunlin) of European importance, with particular reference to:</p> <ul style="list-style-type: none"> • Upland moorland <p>To maintain*, in favourable condition, the:</p> <ul style="list-style-type: none"> • Blanket bog • European dry heath • Northern Atlantic wet heaths with <i>Erica tetralix</i>
North Pennine Moors	<p>To maintain*, in favourable condition, the habitats for the populations of Annex 1 species (Golden Plover, Hen Harrier, Merlin and Peregrine) of European importance, with particular reference to:</p> <ul style="list-style-type: none"> • Upland moorland <p>To maintain*, in favourable condition, the habitats of the migratory bird species (Curlew) of European importance, with particular reference to:</p> <ul style="list-style-type: none"> • Upland moorland • Upland pasture <p>To maintain*, in favourable condition, the:</p> <ul style="list-style-type: none"> • Blanket bog; • Petrifying springs with tufa formation; • Alkaline fen; • European dry heath; • Northern Atlantic wet heaths with <i>Erica tetralix</i>; • Habitat for <i>Saxifraga hirculus</i> • Semi-natural dry grasslands and scrubland facies on calcareous substrates; • Siliceous alpine and boreal grasslands. <p>To maintain*, in favourable condition, the habitat for the population of:</p> <ul style="list-style-type: none"> • Marsh saxifrage (<i>Saxifraga hirculus</i>)
Ribble and Alt Estuaries	<p>To maintain*, in favourable condition, the habitats for the populations of Annex I species (golden plover, Bewick's swan, whooper swan and bar-tailed godwit) of European importance, with particular reference to:</p> <ul style="list-style-type: none"> • Intertidal sand and mudflats • saltmarsh • marshy grassland <p>To maintain*, in favourable condition, the habitats for the populations of migratory bird species (pink-footed goose, shelduck, wigeon, teal, pintail, oystercatcher, grey plover, knot, sanderling, dunlin, redshank and black-tailed godwit) of European importance, with particular reference to:</p> <ul style="list-style-type: none"> • Intertidal sand and mudflat • saltmarsh • marshy grassland <p>To maintain*, in favourable condition, the habitats for the populations of waterfowl that contribute to the wintering waterfowl assemblage of European importance, with particular reference to:</p> <ul style="list-style-type: none"> • Intertidal sand and mudflat • saltmarsh • marshy grassland

Habitat Regulations Assessment Screening Report

10

North Pennine Dales Meadows	<p>To maintain*, in favourable condition, the:</p> <ul style="list-style-type: none"> • Upland hay meadows
Bowland Fells	<p>To maintain*, in favourable condition, the habitats for the populations of Annex 1 bird species (Breeding Hen Harrier and Merlin) of European importance, with particular reference to:</p> <ul style="list-style-type: none"> • Upland heathland • Blanket bog • Acid grassland <p>To maintain*, in favourable condition, the habitats for the populations of migratory bird species (Breeding Lesser Black-backed Gull) of European importance, with particular reference to:</p> <ul style="list-style-type: none"> • Upland heathland • Blanket bog • Acid grassland

[* maintenance implies restoration if the feature is not currently in favourable condition]

Step d) Assessing the significance of any effects.

20. In undertaking this assessment, advice was taken from Natural England on operations which are likely to damage the special interest of each European Site. The list of such operations for each Site is at Appendix 4. Any plan or project activity which did not involve an operation listed as being likely to be damaging to the special interest of the site was assessed as being not likely to have a significant effect on a European Site and therefore could be screened out. Environment Agency consulted on likely effects to Ribble & Alt Estuaries who responded that, other than consulting Natural England, they did not have any specific guidance or advice to offer. Table 4 below shows the likely effect of those operations on the European Sites.

4. Screening Assessment Criteria

	Bowland Fells	North Pennine Moors	South Pennine Moors	North Pennine Dales Meadows	Ribble & Alt Estuary
Condition and issues: Assessment of any likely direct, indirect or secondary impacts of the plan either alone or in combination with other plans, on the designated site due to:	Favourable nature conservation status of the site depends on appropriate levels of sheep grazing, sympathetic moorland burning practice, sensitive water catchment land management practices and on going species protection.	The habitats and qualifying breeding bird populations are mostly dependant upon stock grazing and burning at sympathetic levels. Over-grazing, over-burning and other forms of intensive agricultural or sporting management e.g. drainage may be damaging.	Maintenance of the eco-systems on which the birds depend relies on appropriate grazing levels and burning regimes, and overgrazing by sheep is a key pressure. Management of grazing is further complicated by the presence of a large number of commons within the SPA. Pressures outside the site, in particular the loss of bird feeding areas through agricultural intensification, increase the vulnerability of the bird populations. Unfavourable Recovering as assessed by Natural England (November 2010).	These grasslands are dependant upon traditional agricultural management, with hay-cutting and no or minimal use of agro-chemicals. Such management is no longer economic.	Overall, the dunes, intertidal flats and salt marsh enjoy a relatively robust status and a favourable condition. However, the site is, in places, subject to pressure from recreation, built development (including coastal defence), wildfowling and industry including sand-winning.
• Size and scale;	Outside Borough. Due to distance, geography and elevation – None	Outside Borough. Due to distance, geography and elevation – None	None – Objective 10 options and Policies relevant to the effect are suitably worded to prevent or, with mitigation, restrict effects to insignificant	Outside Borough. Due to distance, geography and elevation – None	Site is downstream, Objective 10 options and Policies relevant to the effect are suitably worded to prevent or, with mitigation, restrict effects to insignificant
• Land-take;	Outside Borough – None	Outside Borough – None	None – Objective 10 options and Policies relevant to the effect are suitably worded to prevent or, with	Outside Borough – None	Outside Borough – None

	Bowland Fells	North Pennine Moors	South Pennine Moors	North Pennine Dales Meadows	Ribble & Alt Estuary
			mitigation, restrict effects to insignificant		
• Distance from the designated site and key features of the site;	17 km	10.8 km	Only 9.1% of the site is within Borough boundary	13.2 km	38.4 km.
• Resource requirements (water abstraction etc);	None	None	None	None	Although site is downstream, Objective 10 options and Policies relevant to the effect are suitably worded to prevent or, with mitigation, restrict effects to insignificant
• Emissions (disposal to land, water or air);	None	None	To land – none allowed To water – downstream from site > no effect. By air – prevailing wind is north west therefore passing over site but damage to special interest unlikely or insignificant. Objective 10 options and Policies relevant to the effect are suitably worded to prevent or, with mitigation, restrict effects to insignificant	None	To land – none To water – site downstream, Objective 10 options and Policies relevant to the effect are suitably worded to prevent or, with mitigation, restrict effects to insignificant By air – none. Prevailing wind is north west therefore away from site.
• Excavation requirements;	Outside Borough – None	Outside Borough – None	Objective 10 options and Policies relevant to the effect are suitably worded to prevent or, with mitigation, restrict effects to insignificant	Outside Borough – None	Outside Borough – None
• Duration of construction, operation, decommissioning, etc.;	None	None	Objective 10 options and Policies relevant to the effect are suitably worded to prevent or, with mitigation, restrict effects to insignificant	None	Objective 10 options and Policies relevant to the effect are suitably worded to prevent or, with mitigation, restrict effects to insignificant
• Other.	None	None	None	None	None
Assessment of any likely changes to the site arising as a result of:					
• Reduction of habitat area;	None	None	None – Objective 10 options and Policies	None	None

	Bowland Fells	North Pennine Moors	South Pennine Moors	North Pennine Dales Meadows	Ribble & Alt Estuary
			relevant to the effect are suitably worded to prevent or, with mitigation, restrict effects to insignificant		
• Disturbance to key species;	None	None	None – Objective 10 options and Policies relevant to the effect are suitably worded to prevent or, with mitigation, restrict effects to insignificant	None	None
• Habitat or species fragmentation;	None	None	None – Objective 10 options and Policies relevant to the effect are suitably worded to prevent or, with mitigation, restrict effects to insignificant	None	None
• Reduction in species density;	None	None	None – Objective 10 options and Policies relevant to the effect are suitably worded to prevent or, with mitigation, restrict effects to insignificant	None	None
• Changes in key indicators of conservation value (water quality etc.);	None	None	None – Objective 10 options and Policies relevant to the effect are suitably worded to prevent or, with mitigation, restrict effects to insignificant	None	Unlikely due to distance and wording of Objective 10 Options and Policies relevant to the effect
• Climate change.	None	None	None – Objective 10 options and Policies relevant to the effect are suitably worded to prevent or, with mitigation, restrict effects to insignificant	None	Unlikely due to distance and wording of Objective 10 Options and Policies relevant to the effect
Assessment of any likely impact on the designated site as a whole in terms of:					
• Interference with the key relationships that define the structure of the site;	Due to distance - None	Due to distance - None	Objective 10 options and Policies relevant to the effect are suitably worded to prevent or,	Due to distance - None	Unlikely due to distance and wording of Objective 10 Options and Policies relevant to

	Bowland Fells	North Pennine Moors	South Pennine Moors	North Pennine Dales Meadows	Ribble & Alt Estuary
			with mitigation, restrict effects to insignificant		the effect
<ul style="list-style-type: none"> Interference with key relationships that define the function of the site. 	Due to distance - None	Due to distance - None	Objective 10 options and Policies relevant to the effect are suitably worded to prevent or, with mitigation, restrict effects to insignificant	Due to distance - None	Unlikely due to distance and wording of Objective 10 Options and Policies relevant to the effect
Assessment of significance as a result of the identification of effects set out above in terms of:					
<ul style="list-style-type: none"> Loss; 	None	None	Insignificant/None	None	Insignificant/None
<ul style="list-style-type: none"> Fragmentation; 	None	None	Insignificant/None	None	Insignificant/None
<ul style="list-style-type: none"> Disruption; 	None	None	Insignificant/None	None	Insignificant/None
<ul style="list-style-type: none"> Disturbance; 	None	None	Insignificant/None	None	Insignificant/None
<ul style="list-style-type: none"> Change to key elements of the site (e.g. water quality etc.). 	None	None	Insignificant/None	None	Insignificant/None
Summary:	<p><u>No likely significant effect.</u></p> <p>Site is outside the Borough. Favourable nature conservation status of the Site depends upon activities and/or management which are not affected by LDF Strategic Objectives.</p>	<p><u>No likely significant effect.</u></p> <p>Site is outside the Borough. Favourable nature conservation status of the Site depends upon activities and/or management which are not affected by LDF Strategic Objectives.</p>	<p><u>No likely significant effect.</u></p> <p>Only 9.1% of the Site is within the Borough. Objective 10 options and Policies relevant to the effect, in conjunction with Government guidelines and legislation, are suitably worded to prevent or, with mitigation, restrict effects to insignificant.</p>	<p><u>No likely significant effect.</u></p> <p>Site is outside the Borough. Favourable nature conservation status of the Site depends upon activities and/or management which are not affected by LDF Strategic Objectives.</p>	<p><u>No likely significant effect.</u></p> <p>Site is outside the Borough. Favourable nature conservation status of the Site depends upon activities and/or management which are not affected by LDF Strategic Objectives.</p>

Detail table of Strategic Objectives effect on European Sites.

Pendle's Core Strategy Preferred Options Strategic Objectives and Spatial Strategy are shown at **Appendix 2**. They either have no significant effect in their own right **or** effects will be excluded or mitigated by Policy, existing legislation and/or Government policy guidance which is cited particularly at Strategic Objective 10 under which the Council will not approve any development which cannot demonstrate that it is not likely to have a significant effect upon a European Site. Government legislation, policy and guidance is summarised in the table on page 34.

Potential impacts or effects on any of the five identified European Sites are listed in the following table which should be read in conjunction with the Site specific tables after it and the list of operations likely to damage the special interest of each site at Appendix 4.

Reference	Potential Impact or Effect	Relevance
A	Other supporting habitats	Loss or reduction of other sites used by fauna such as feeding sites through development or agricultural intensification/diversification
B	Recreational/Tourism pressure	Walking/cycling/4X4 vehicle erosion, proliferation or widening of paths or tracks leading to habitat fragmentation. Trampling of vegetation leading to habitat loss. Dogs off leads temporarily disturbing ground nesting birds > loss of eggs or chicks by abandonment or predation.
C	Land take within the site	Habitat loss and fragmentation
D	Water abstraction or drainage	Ground water reduction > flora decline or change particularly bog
E	Water pollution or drainage outfall to site	Only relevant if site is downstream of development or if development is within the site itself
F	Emissions/air pollution	Effect depends upon distance of source from site and prevailing wind
G	Land management practice	Grazing levels, burning regimes, drainage etc
H	Mineral extraction	Excavation damage to the habitat
I	Noise	Recreational disturbance, wind turbine motion
J	Renewables	Wind farm – bird strike, bird displacement, movement barrier to feeding/wintering or other sites, loss of habitat to infrastructure, maintenance visits. Biomass – planting on feeding/other areas

Site Name:	South Pennine Moors		Other plans or projects ‘in combination’: Bradford, Calderdale, Craven, Burnley and Regional Spatial Strategy	
Conditions supporting site integrity	<ul style="list-style-type: none">Maintenance of the eco-systems on which the birds depend relies on appropriate grazing levels and burning regimes, and overgrazing by sheep is a key pressure.Management of grazing is further complicated by the presence of a large number of commons within the SPA.Pressures outside the site, in particular the loss of bird feeding areas through agricultural intensification, increase the vulnerability of the bird populations.			
Strategic Objective	Possible impacts	Likely significant effect alone?	Likely significant effect ‘in combination’	Comments
1 Establish a hierarchy of settlements to assist regeneration by promoting the re-use of existing buildings and Brownfield sites and directing growth to the most sustainable locations	None	Nil	Nil	Urban focus. Objective 3 and 9 will assist.
2 Ensure that the infrastructure is capable of supporting both new and existing development, thereby helping to create sustainable communities	None	Nil	Nil	Site is upstream of potential development sites so no outfall/pollution issues.
3 Promote high quality design in new developments, our streets and public spaces, to create fully accessible, attractive and safe places to live, learn, work, play or visit	None	Nil	Nil	Locally accessible Public Open Space will help ease pressure on rural areas
4 Respond to the causes and potential impacts of climate change through a process of mitigation and adaptation	C, I, J or on other land	Nil Sites of natural heritage importance will be protected and effects excluded or mitigated via Policies such as ENV2 and ENV4 supported by Objective 10 and Government guidelines or legislative requirements and provisions such as in Circular 2/99 which provides for Environmental Impact	Nil Potential effects excluded/mitigated or positive. Pendle South Valley Colne AAP – New residential development; Tourist development; Small wind farm; Improved/extended Public Open Space. Bradford Core Strategy – Support rural economy and diversification; Protect and enhance heritage assets. Calderdale UDP – Safeguard better agricultural land; Telecommunications controlled; Adverse Development near or within SSSI not permitted. Craven Core Strategy – Small to medium	Depends upon scale and location of proposal whether it has potential for indirect effect on external feeding grounds and/or flight paths. The further away and smaller the scale, the less likely the effect. Impacts will be avoided by Policy and Strategic Objective 10. Other plans worded to exclude/mitigate effects or positively affect site.

		Assessment.	<p>renewables may be supported in less environmentally sensitive locations; Wind turbines where no adverse impact; Conservation, restoration and enhancement of environmental assets priority.</p> <p>Burnley Local Plan – Development not permitted where likely to have adverse impact on SPA; Wind farms where no impact on nature conservation; Protected species to be protected.</p> <p>RSS – Local Planning Authorities should give significant weight to the wider environmental, community and economic benefits of proposals for renewable energy schemes, although significant protection is afforded to international designations</p>	
5 Deliver quality housing that is both appropriate and affordable, contributing to the creation of a balanced housing market	A, B, F, I	<p>Nil</p> <p>Sites of natural heritage importance will be protected and effects excluded or mitigated via Policies such as ENV1, ENV2 or ENV4 supported by Objective 10 and Government guidelines or legislative requirements and provisions such as in Circular 2/99 which provides for Environmental Impact Assessment.</p>	<p>Nil</p> <p>Potential effects excluded/mitigated or positive.</p> <p>Pendle Sustainable Community Strategy – Vibrant housing market with mix of high quality and affordable housing.</p> <p>Pendle South Valley Colne AAP – New residential development; Tourist development; Improved/extended Public Open Space.</p> <p>Pendle Draft Conservation Area SPD – Balance competing demands on environment</p> <p>Bradford Core Strategy – Balanced mix of new housing; Use brownfield sites; Low housing demand; Needs of smaller settlements.</p> <p>Calderdale UDP – 85% new dwellings on Brownfield sites; Restrain development outside urban areas via green belt; Adverse Development near or within SSSI not permitted.</p> <p>Craven Core Strategy – 70% of new houses to be on brownfield sites; most development to be concentrated in Skipton as main service centre; Conservation, restoration and enhancement of environmental assets priority.</p> <p>Burnley Local Plan – Development restricted in rural areas; 9.54 Ha allocated for new housing; Development not permitted where likely to have</p>	Depends upon scale and location of proposal whether it has potential for direct, indirect or no effect on site integrity.

			<p>adverse impact on SPA.</p> <p>RSS – Reduce vacancy rates in residential stock and make use of existing stock; Pendle to supply 3420 new residential units by 2021, with at least 65% built on brownfield land; Seek a proportion of affordable housing on all development sites above the relevant thresholds; All major new developments to be located where good access to public transport already exists</p>	
<p>6 Strengthen the local economy by facilitating economic growth, particularly where it supports economic diversification and rural regeneration</p>	A, F, G, J	<p>Nil</p> <p>Sites of natural heritage importance will be protected and effects excluded or mitigated via policies such as SDP1, SDP6 or ENV2 supported by Objective 10 and Government guidelines or legislative requirements.</p>	<p>Nil</p> <p>Potential effects excluded/mitigated or positive.</p> <p>Pendle Sustainable Community Strategy – Create and sustain dynamic, competitive and healthy local economy; Refurbishment of employment space</p> <p>Bradford Core Strategy – Protect existing employment land and premises; Support rural economy and farm diversification.</p> <p>Calderdale UDP – Employment use in Primary Employment Areas; Encourage re-use and adaptation of rural buildings for business; Safeguard better agricultural land.</p> <p>Craven Core Strategy – New retail development encouraged within or on edge of Skipton.</p> <p>Burnley Local Plan – Expansion and improvement of existing employment uses; 57.19 Ha allocated for employment use; Development not permitted where likely to have adverse impact on SPA.</p> <p>RSS - Make the best use of existing resources and infrastructure; Local Authorities to identify Key Service Centres and Local Service Centres; Lancashire wide employment land requirement - districts to work together to disaggregate. Pendle has shortfall of approx 7 ha (Pendle Employment Land Review)</p>	<p>Farming practice generally beyond remit of LPA, e.g. change to biomass not controlled. Other change of use can be controlled. Emissions controlled/mitigated by legislative means</p>

7 Increase the choice, variety and quality of the retail offer and promote uses that contribute to the creation of a well-balanced, safe and socially inclusive night-time economy in our town centres	None	Nil	Nil	Town centre focus
8 Reduce inequalities by ensuring that new community, education and healthcare facilities and their services are fully accessible	None	Nil	Nil	Facilities locations will have an urban focus. Objective 11 will assist.
9 Protect, enhance and improve access to our green open spaces, sport and recreation facilities to improve health and well-being through the promotion of more active lifestyles, encouraging a greater appreciation of the enjoyment they provide and the valuable contribution they make to biodiversity	None	Nil > Positive	Nil > Positive	Beneficial as it takes recreational pressure off the Site.
10 Ensure that new development respects our natural and man-made heritage, by seeking to protect and maintain those sites and habitats which are valued for the positive contribution they make to the character of our landscape, townscape or biodiversity	None	Nil > Positive	Nil > Positive	Positive effect.
11 Deliver a safe, sustainable transport network that improves both internal and external connectivity, reduces the need to travel by car, supports long-term growth and contributes to an improved environment	None	Nil > Positive	Nil > Positive	Potentially positive effect through reduced vehicle emissions.

Site Name:	North Pennine Moors		Other plans or projects ‘in combination’: Craven and RSS	
Conditions supporting site integrity	• The habitats and qualifying breeding bird populations are mostly dependant upon stock grazing and burning at sympathetic levels. Over-grazing, over-burning and other forms of intensive agricultural or sporting management e.g. drainage may be damaging.			
Strategic Objective	Possible impacts	Likely significant effect alone?	Likely significant effect ‘in combination’	Comments
1 Establish a hierarchy of settlements to assist regeneration by promoting the re-use of existing buildings and Brownfield sites and directing growth to the most sustainable locations	None	Nil	Nil	Urban focus. Objective 3 and 9 will assist.
2 Ensure that the infrastructure is capable of supporting both new and existing development, thereby helping to create sustainable communities	None	Nil	Nil	Site is separate water catchment area so no outfall/pollution issues.
3 Promote high quality design in new developments, our streets and public spaces, to create fully accessible, attractive and safe places to live, learn, work, play or visit	None	Nil	Nil	Locally accessible Public Open Space will help ease pressure on rural areas
4 Respond to the causes and potential impacts of climate change through a process of mitigation and adaptation	J	Nil	Unlikely Craven Core Strategy - Small to medium renewables may be supported in less environmentally sensitive locations; Wind turbines where no adverse impact; Conservation, restoration and enhancement of environmental assets priority. RSS – Local Planning Authorities should give significant weight to the wider environmental, community and economic benefits of proposals for renewable energy schemes, although significant protection is afforded to international designations	Site outside Borough so renewables within Borough only have minor potential effect on flight patterns. Major effects national level issue.
5 Deliver quality housing that is both appropriate and affordable, contributing to the creation of a balanced housing market	None	Nil	Nil	

6 Strengthen the local economy by facilitating economic growth, particularly where it supports economic diversification and rural regeneration	A	Nil	Unlikely Pendle Sustainable Community Strategy – Create and sustain dynamic, competitive and healthy local economy; Refurbishment of employment space Craven Core Strategy – New retail development encouraged within or on edge of Skipton. RSS - Make the best use of existing resources and infrastructure; Local Authorities to identify Key Service Centres and Local Service Centres; Lancashire wide employment land requirement - districts to work together to disaggregate. Pendle has shortfall of approx 7 ha (Pendle Employment Land Review)	Farming practice beyond remit of LPA, e.g. change to biomass not controlled. Other change of use can be controlled. Emissions controlled/mitigated by legislative means.
7 Increase the choice, variety and quality of the retail offer and promote uses that contribute to the creation of a well-balanced, safe and socially inclusive night-time economy in our town centres	None	Nil	Nil	Town centre focus
8 Reduce inequalities by ensuring that new community, education and healthcare facilities and their services are fully accessible	None	Nil	Nil	Facilities locations will have an urban focus. Objective 11 will assist.
9 Protect, enhance and improve access to our green open spaces, sport and recreation facilities to improve health and well-being through the promotion of more active lifestyles, encouraging a greater appreciation of the enjoyment they provide and the valuable contribution they make to biodiversity	None	Nil > Positive	Nil > Positive	Will help to ease recreational pressure.

10 Ensure that new development respects our natural and man-made heritage, by seeking to protect and maintain those sites and habitats which are valued for the positive contribution they make to the character of our landscape, townscape or biodiversity	None	Nil > Positive	Nil > Positive	Positive effect.
11 Deliver a safe, sustainable transport network that improves both internal and external connectivity, reduces the need to travel by car, supports long-term growth and contributes to an improved environment	None	Nil > Positive	Nil > Positive	Reduced vehicle emissions beneficial.

Site Name:	Bowland Fells			Other plans or projects 'in combination': Craven, Ribble and RSS
Conditions supporting site integrity	<ul style="list-style-type: none">Favourable nature conservation status of the site depends on appropriate levels of sheep grazing, sympathetic moorland burning practice, sensitive water catchment land management practices and on going species protection.			
Strategic Objective	Possible impacts	Likely significant effect alone?	Likely significant effect 'in combination'	Comments
1 Establish a hierarchy of settlements to assist regeneration by promoting the re-use of existing buildings and Brownfield sites and directing growth to the most sustainable locations	None	Nil	Nil	Urban focus. Objective 3 and 9 will assist.
2 Ensure that the infrastructure is capable of supporting both new and existing development, thereby helping to create sustainable communities	None	Nil	Nil	
3 Promote high quality design in new developments, our streets and public spaces, to create fully accessible, attractive and safe places to live, learn, work, play or visit	None	Nil	Nil	Locally accessible Public Open Space will help ease pressure on rural areas
4 Respond to the causes and potential impacts of climate change through a process of mitigation and adaptation	J	Nil	Unlikely Craven Core Strategy - Small to medium renewables may be supported in less environmentally sensitive locations; Wind turbines where no adverse impact; Conservation, restoration and enhancement of environmental assets priority. Ribble Core Strategy – Conserve wildlife and protected habitats. RSS – Local Planning Authorities should give significant weight to the wider environmental, community and economic benefits of proposals for renewable energy schemes, although significant protection is afforded to international designations	Site outside Borough so renewables within Borough only have minor potential effect on flight patterns. Major effects national level issue.

5 Deliver quality housing that is both appropriate and affordable, contributing to the creation of a balanced housing market	None	Nil	Nil	
6 Strengthen the local economy by facilitating economic growth, particularly where it supports economic diversification and rural regeneration	A	Nil	<p>Unlikely</p> <p>Pendle Sustainable Community Strategy – Create and sustain dynamic, competitive and healthy local economy; Refurbishment of employment space</p> <p>Craven Core Strategy – New retail development encouraged within or on edge of Skipton.</p> <p>Ribble Core Strategy – Promote tourism and farm diversification.</p> <p>RSS - Make the best use of existing resources and infrastructure; Local Authorities to identify Key Service Centres and Local Service Centres; Lancashire wide employment land requirement - districts to work together to disaggregate. Pendle has shortfall of approx 7 ha (Pendle Employment Land Review)</p>	Farming practice beyond remit of LPA, e.g. change to biomass not controlled. Other change of use can be controlled. Emissions controlled/mitigated by legislative means.
7 Increase the choice, variety and quality of the retail offer and promote uses that contribute to the creation of a well-balanced, safe and socially inclusive night-time economy in our town centres	None	Nil	Nil	Town centre focus
8 Reduce inequalities by ensuring that new community, education and healthcare facilities and their services are fully accessible	None	Nil	Nil	Facilities locations will have an urban focus. Objective 11 will assist.
9 Protect, enhance and improve access to our green open spaces, sport and recreation facilities to improve health and well-being through the promotion of more active lifestyles, encouraging a greater appreciation of the enjoyment they provide and the valuable contribution they make to biodiversity	None	Nil > Positive	Nil > Positive	Will help to ease recreational pressure.

10 Ensure that new development respects our natural and man-made heritage, by seeking to protect and maintain those sites and habitats which are valued for the positive contribution they make to the character of our landscape, townscape or biodiversity	None	Nil > Positive	Nil > Positive	Positive effect.
11 Deliver a safe, sustainable transport network that improves both internal and external connectivity, reduces the need to travel by car, supports long-term growth and contributes to an improved environment	None	Nil > Positive	Nil > Positive	Reduced vehicle emissions beneficial.

Site Name:	North Pennine Dales Meadows		Other plans or projects ‘in combination’: Craven, Ribble and RSS	
Conditions supporting site integrity	<ul style="list-style-type: none">These grasslands are dependant upon traditional agricultural management, with hay-cutting and no or minimal use of agro-chemicals. Such management is no longer economic.			
Strategic Objective	Possible impacts	Likely significant effect alone?	Likely significant effect ‘in combination’	Comments
1 Establish a hierarchy of settlements to assist regeneration by promoting the re-use of existing buildings and Brownfield sites and directing growth to the most sustainable locations	None	Nil	Nil	Urban focus. Objective 3 and 9 will assist.
2 Ensure that the infrastructure is capable of supporting both new and existing development, thereby helping to create sustainable communities	None	Nil	Nil	
3 Promote high quality design in new developments, our streets and public spaces, to create fully accessible, attractive and safe places to live, learn, work, play or visit	None	Nil	Nil	Locally accessible Public Open Space will help ease pressure on rural areas
4 Respond to the causes and potential impacts of climate change through a process of mitigation and adaptation	None	Nil	Nil	Major effects national level issue.
5 Deliver quality housing that is both appropriate and affordable, contributing to the creation of a balanced housing market	None	Nil	Nil	
6 Strengthen the local economy by facilitating economic growth, particularly where it supports economic diversification and rural regeneration	None	Nil	Nil	Farming practice beyond remit of LPA, e.g. change to biomass not controlled.

7 Increase the choice, variety and quality of the retail offer and promote uses that contribute to the creation of a well-balanced, safe and socially inclusive night-time economy in our town centres	None	Nil	Nil	Town centre focus
8 Reduce inequalities by ensuring that new community, education and healthcare facilities and their services are fully accessible	None	Nil	Nil	Facilities locations will have an urban focus. Objective 11 will assist.
9 Protect, enhance and improve access to our green open spaces, sport and recreation facilities to improve health and well-being through the promotion of more active lifestyles, encouraging a greater appreciation of the enjoyment they provide and the valuable contribution they make to biodiversity	None	Nil > Positive	Nil > Positive	Will help to ease recreational pressure.
10 Ensure that new development respects our natural and man-made heritage, by seeking to protect and maintain those sites and habitats which are valued for the positive contribution they make to the character of our landscape, townscape or biodiversity	None	Nil > Positive	Nil > Positive	Positive effect.
11 Deliver a safe, sustainable transport network that improves both internal and external connectivity, reduces the need to travel by car, supports long-term growth and contributes to an improved environment	None	Nil > Positive	Nil > Positive	Reduced vehicle emissions beneficial.

Site Name:	Ribble and Alt Estuaries			Other plans or projects 'in combination': Ribble, Burnley and RSS
Conditions supporting site integrity	<ul style="list-style-type: none"> Overall, the dunes, intertidal flats and salt marsh enjoy a relatively robust status and a favourable condition. However, the site is, in places, subject to pressure from recreation, built development (including coastal defence), wildfowling and industry including sand-winning. 			
Strategic Objective	Possible impacts	Likely significant effect alone?	Likely significant effect 'in combination'	Comments
1 Establish a hierarchy of settlements to assist regeneration by promoting the re-use of existing buildings and Brownfield sites and directing growth to the most sustainable locations	D, E	Nil	Nil	Legislative controls and good practice standards for works will remove or mitigate. Estuary is tidal and wide catchment mean any effect of abstraction likely to be insignificant.
2 Ensure that the infrastructure is capable of supporting both new and existing development, thereby helping to create sustainable communities	D, E	Nil	Nil	Legislative controls and good practice standards for works will remove or mitigate. Estuary is tidal and wide catchment mean any effect of abstraction likely to be insignificant.
3 Promote high quality design in new developments, our streets and public spaces, to create fully accessible, attractive and safe places to live, learn, work, play or visit	None	Nil	Nil	
4 Respond to the causes and potential impacts of climate change through a process of mitigation and adaptation	None	Nil	Nil	Strategic Objective addresses issues which may be effects. Major effects national level issue.
5 Deliver quality housing that is both appropriate and affordable, contributing to the creation of a balanced housing market	D, E	Nil	Nil	Legislative controls and good practice standards will remove or mitigate. Estuary is tidal and wide catchment mean any effect of abstraction likely to be insignificant.
6 Strengthen the local economy by facilitating economic growth, particularly where it supports	D, E	Nil	Nil	Legislative controls and good practice standards will

economic diversification and rural regeneration				remove or mitigate. Estuary is tidal and wide catchment mean any effect of abstraction likely to be insignificant.
7 Increase the choice, variety and quality of the retail offer and promote uses that contribute to the creation of a well-balanced, safe and socially inclusive night-time economy in our town centres	D, E	Nil	Nil	Legislative controls and good practice standards will remove or mitigate. Estuary is tidal and wide catchment mean any effect of abstraction likely to be insignificant.
8 Reduce inequalities by ensuring that new community, education and healthcare facilities and their services are fully accessible	None	Nil	Nil	
9 Protect, enhance and improve access to our green open spaces, sport and recreation facilities to improve health and well-being through the promotion of more active lifestyles, encouraging a greater appreciation of the enjoyment they provide and the valuable contribution they make to biodiversity	None	Nil > Positive	Nil > Positive	Will help to ease recreational pressure.
10 Ensure that new development respects our natural and man-made heritage, by seeking to protect and maintain those sites and habitats which are valued for the positive contribution they make to the character of our landscape, townscape or biodiversity	None	Nil > Positive	Nil > Positive	Positive effect.
11 Deliver a safe, sustainable transport network that improves both internal and external connectivity, reduces the need to travel by car, supports long-term growth and contributes to an improved environment	None	Nil > Positive	Nil > Positive	Reduced vehicle emissions beneficial.

Summary Table of Likely Significant Effects 'in combination'.

Core Strategic Objectives	South Pennine Moors	North Pennine Moors	Bowland Fells	North Pennine Dales Meadows	Ribble & Alt Estuaries
1	Nil	Nil	Nil	Nil	Nil
2	Nil	Nil	Nil	Nil	Nil
3	Nil	Nil	Nil	Nil	Nil
4	Nil	Unlikely	Unlikely	Nil	Nil
5	Nil	Nil	Nil	Nil	Nil
6	Nil	Unlikely	Unlikely	Nil	Nil
7	Nil	Nil	Nil	Nil	Nil
8	Nil	Nil	Nil	Nil	Nil
9	Nil/Positive	Nil/Positive	Nil/Positive	Nil/Positive	Nil/Positive
10	Nil/Positive	Nil/Positive	Nil/Positive	Nil/Positive	Nil/Positive
11	Nil/Positive	Nil/Positive	Nil/Positive	Nil/Positive	Nil/Positive

Key:

Positive	Effects are beneficial
Nil	No or insignificant effect
Unlikely	No likely significant effect due to avoidance or mitigation

Conclusion

Appendix 4 provides detail of operations which would be likely to harm the special interest of the sites. Reference to Table 4 and the Strategic Objective Tables above (page 15 on) shows how the Strategic Objectives, either alone or 'in combination', are unlikely to involve any operations listed at Appendix 4 and are therefore unlikely to have a significant effect on any of the short-listed sites. Some Strategic Objectives will have a positive effect on such sites.

Only 9.1% of one of the short-listed European Sites, the South Pennine Moors SAC/SPA, is within the Borough boundary. The other Sites are an absolute minimum of 10.8 Km distant from Borough boundary to Site boundary and therefore, through the evaluation process detailed above and summarised in the table above, it is concluded that **any effects of the Pendle Borough Council LDF Core Strategy Preferred Options DPD upon European Sites are not likely to be significant** and therefore the Sites can be screened out as being unlikely to be affected.

Further Appropriate Assessment of this DPD is therefore not necessary.

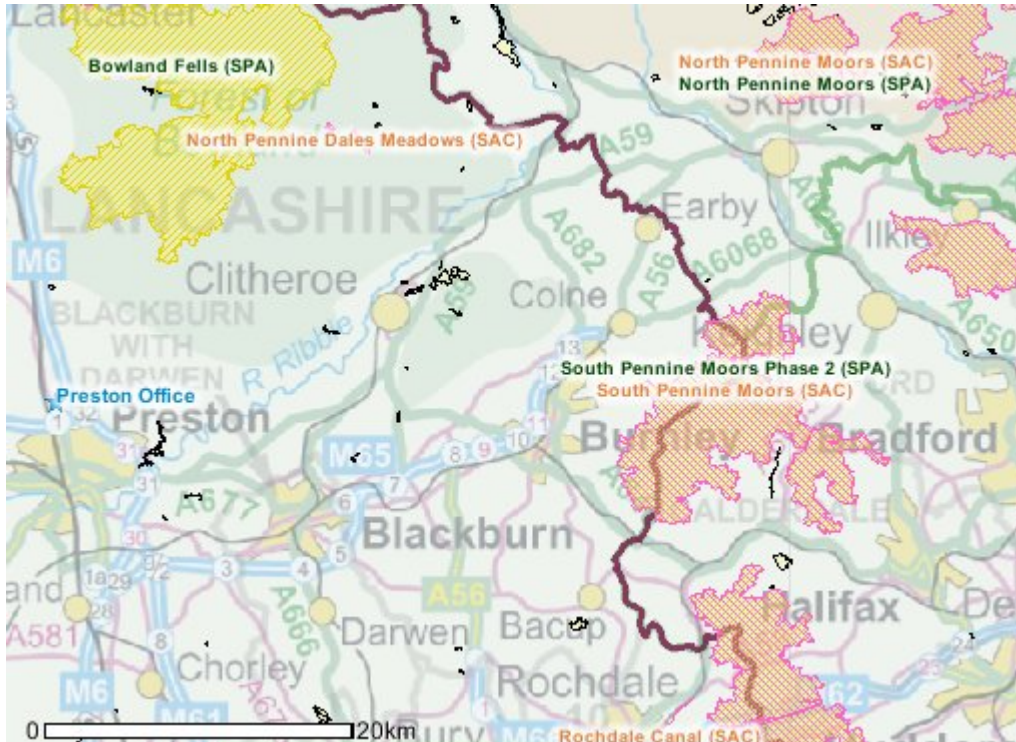
On the basis of the information contained in Parts 1 to 4 of tables above including consultation with Natural England it is the Borough Council's opinion that the proposed plan to which this screening opinion relates:

- a. is not directly connected with or necessary to the management of the site, and**
- b. is not likely to have a significant effect on a European Site (in combination with other plans or projects).**

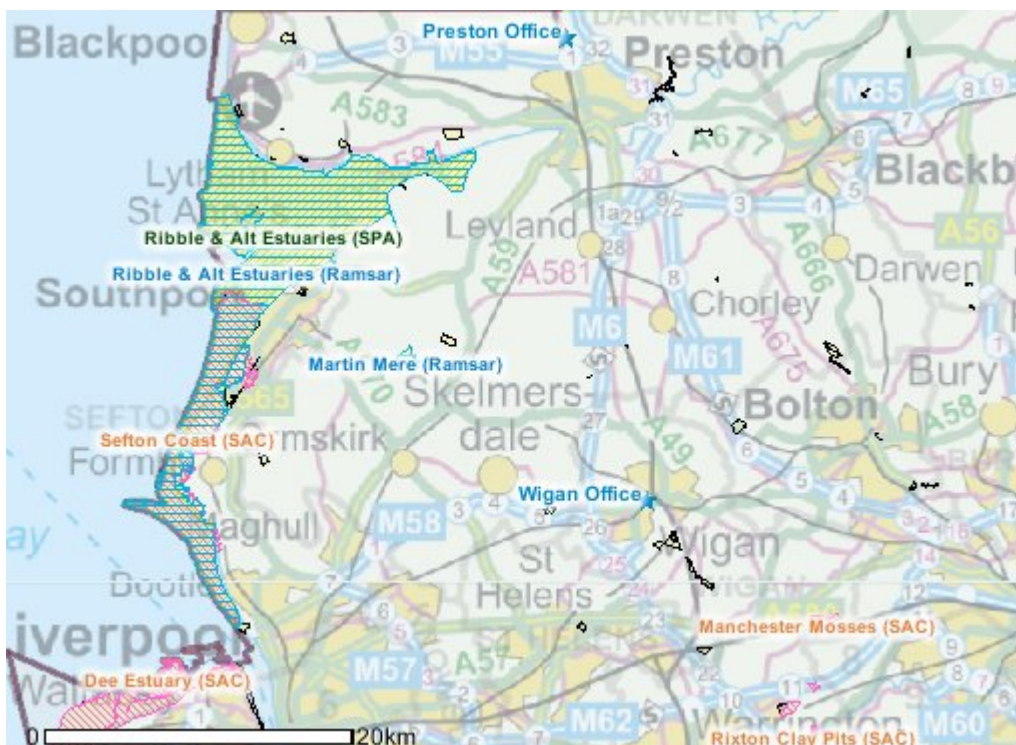
Accordingly, an "appropriate assessment" will not be required of those effects under Regulation 61, 62, 67 and 68 of The Conservation of Habitats and Species Regulations 2010 before the Council decides to undertake, or give any consent, permission or other authorisation for this plan.

Appendix 1 – Maps.

Map showing European Sites within or nearby Pendle Borough.



Map showing more distant Ribble & Alt Estuary European Site.



Appendix 2 – Pendle Core Strategy – Strategic Objectives.

- 1. Establish a hierarchy of settlements to assist regeneration by promoting the re-use of existing buildings and Brownfield sites and directing growth to the most sustainable locations.**
- 2. Ensure that the infrastructure is capable of supporting both new and existing development, thereby helping to create sustainable communities.**
- 3. Promote high quality design in new developments, our streets and public spaces, to create fully accessible, attractive and safe places to live, learn, work, play or visit.**
- 4. Respond to the causes and potential impacts of climate change through a process of mitigation and adaptation.**
- 5. Deliver quality housing that is both appropriate and affordable, contributing to the creation of a balanced housing market.**
- 6. Strengthen the local economy by facilitating economic growth, particularly where it supports economic diversification and rural regeneration.**
- 7. Increase the choice, variety and quality of the retail offer and promote uses that contribute to the creation of a well-balanced, safe and socially inclusive night-time economy in our town centres.**
- 8. Reduce inequalities by ensuring that new community, education and healthcare facilities and their services are fully accessible.**
- 9. Protect, enhance and improve access to our green open spaces, sport and recreation facilities to improve health and well-being through the promotion of more active lifestyles, encouraging a greater appreciation of the enjoyment they provide and the valuable contribution they make to biodiversity.**
- 10. Ensure that new development respects our natural and man-made heritage, by seeking to protect and maintain those sites and habitats which are valued for the positive contribution they make to the character of our landscape, townscape or biodiversity.**
- 11. Deliver a safe, sustainable transport network that improves both internal and external connectivity, reduces the need to travel by car, supports long-term growth and contributes to an improved environment.**

Strategic Objective 10 – Government Legislation, Policy and Guidance.

What are we already required to do?	
<ul style="list-style-type: none"> • Every public body must, in exercising its functions, have regard, so far as is consistent with the proper exercise of those functions, to the purpose of conserving biodiversity. 	<ul style="list-style-type: none"> • Natural Environment and Rural Communities Act 2006 (HM Government)
<ul style="list-style-type: none"> • Avoid disturbance of protected species. 	<ul style="list-style-type: none"> • Wildlife and Countryside Act 1981, as revised December 2004 (HM Government)
<ul style="list-style-type: none"> • Reconcile the need for economic growth with the need to protect the natural and historic environment. 	<ul style="list-style-type: none"> • PPS1: delivering Sustainable Development (Communities and Local Government, 2005)
<ul style="list-style-type: none"> • Local authorities should take steps to further the conservation of habitats and species of principal importance through their planning function. 	<ul style="list-style-type: none"> • PPS9: Biodiversity and Geological Conservation (Communities and Local Government, 2004)
<ul style="list-style-type: none"> • Restricts development by requiring consideration of whether a development proposal, in isolation, or in combination with other projects is likely to affect a European protected site, by requiring that an assessment is carried to determine the implications of the development for the site's conservation objectives. 	<ul style="list-style-type: none"> • Circular 06/2005: Biodiversity and geological conservation – statutory obligations and their Impact within the planning system
<ul style="list-style-type: none"> • Where a proposal for development is likely to adversely affect the integrity of a European protected site, or the effects of the proposal on such a site are uncertain, planning authorities should not allocate the site for that type of development. 	<ul style="list-style-type: none"> • Circular 06/2005: Biodiversity and geological conservation – statutory obligations and their Impact within the planning system
<ul style="list-style-type: none"> • When granting planning permission for any development, local planning authorities are under a duty, where appropriate, to impose planning conditions to ensure adequate provision is made for the protection or planting of trees, and to make Tree Preservation Orders (TPOs) as appear necessary in the circumstances. 	<ul style="list-style-type: none"> • Circular 06/2005: Biodiversity and geological conservation – statutory obligations and their Impact within the planning system
<ul style="list-style-type: none"> • The removal of important hedgerows in the countryside (excluding garden hedges and those under 30 years of age) should be controlled through a system of notification. 	<ul style="list-style-type: none"> • The Hedgerows Regulations 1997 (SI 1997/1160)
<ul style="list-style-type: none"> • The nature, size and location of development should take account of its potential impact on the aquatic environment. 	<ul style="list-style-type: none"> • Water Environment (Water Framework Directive) (England and Wales) Regulations 2003
<ul style="list-style-type: none"> • Ensure effective protection for all aspects of the historic built environment, giving special protection towards those areas and buildings of recognised importance. 	<ul style="list-style-type: none"> • PPG15: Planning and the Historic Environment (Communities and Local Government, 1994) • Circular 01/2001 • Circular 09/2005
<ul style="list-style-type: none"> • There is no need for any exceptional, substantial change to the Green Belt and its boundaries in Lancashire before 2011. <p>After that date the presumption will still be against exceptional substantial strategic change to the Green Belt. However, an investigation into the need for change and options for implementation will inform future reviews of the RSS.</p>	<ul style="list-style-type: none"> • Proposed Changes to the Draft Regional Spatial Strategy (Government Office for the North West and North West Regional Assembly, 2008)

Spatial Strategy

Pendle forms an important gateway between Lancashire and Yorkshire, but currently connections between them are poor. Lobbying the appropriate bodies and bidding for funding will primary objectives in helping to deliver a sustainable transport network and improved local connectivity. Better Trans-Pennine links are a vital element in our long-term strategy to fuel sustainable economic growth in both Pendle and Pennine Lancashire.

Our strategy considers the role of the three clearly identifiable spatial areas in Pendle, namely the M65 Corridor, the West Craven Towns and Rural Pendle. Within each of these areas there are a range of different sized settlements, and each performs a different function. The interactions between these spatial areas, and the settlements within them, have made Pendle the place it is today and are the key factor in shaping the place it will become in the future. This Spatial Strategy sets out how these places will change over the next 15 years, to help deliver a better future for Pendle and its residents.

M65 Corridor

The M65 Corridor contains four adjoining settlements: Nelson, Colne, Brierfield and Barrowford. Over the next 15 years the majority of development will be directed towards this area to meet demand and support regeneration. Improvements to the transport network together with new housing and employment opportunities will help to support the economic growth in this densely populated corridor.

In Nelson, Colne and Brierfield targeted redevelopment and consolidation within the inner urban areas will actively help to regenerate these towns, especially in terms of renovated properties and new housing provision. Nelson town centre provides an opportunity for further office development, which will help to fuel a retail revival in the Borough's administrative centre. In Colne additional retail and leisure developments will compliment the existing, diverse and well established range of niche and locally owned businesses.

Barrowford will play a supporting role to the larger towns of Nelson and Colne. New employment opportunities, such as those provided by the Riverside Business Park, will be key to the growth in the M65 Corridor. The development of housing, retail and other services in Barrowford will be on a scale appropriate to its size and function.

West Craven Towns

The West Craven Towns of Barnoldswick and Earby are the main settlements in the north of the Borough. Growth in this part of Pendle will support and diversify the existing economic base and compliment development in the M65 Corridor.

The Rolls Royce plants in Barnoldswick are an important focus for the large concentration of high value advanced engineering businesses throughout Pennine Lancashire. Their continued presence and future success is vital for both the sub-regional and local economy. This does not diminish the need to further diversify the local economic base and reduce the over-dependence on the manufacturing sector, to ensure that the local economy is more resilient to any future economic downturns. Existing employment sites offer redevelopment potential and a limited amount of new housing will help to support the projected population growth in the town.

In West Craven, Earby, like Barrowford in the M65 Corridor, will play a supporting role to its larger neighbour. Opportunities exist at the West Craven Business Park for additional employment on a scale appropriate to the size of the town. New housing and retail development will be limited to support the projected levels of employment and population growth.

Rural Areas

A number of villages and hamlets are located in the rural belt that separates the M65 Corridor from the West Craven Towns. Here the strategy focuses on the protection of the areas natural and built heritage, developing sustainable tourism, supporting farm diversification and meeting local needs. The Rural Areas will see minimal growth with development in the open countryside further restricted by Green Belt and AONB designations.

Some of the larger villages are capable of supporting additional services and housing provision e.g. Trawden, Foulridge, Fence and Kelbrook. In these villages development will again be on a scale that meets the needs of their residents and where appropriate will support the needs of those in neighbouring smaller villages.

Appendix 3 – Plans or Projects considered ‘in combination’

LA District	Plan / Programme	Stage	Relevant	Options / actions to be considered for cumulative impact
Pendle	Our Pendle Our Future: Pendle's Sustainable Community Strategy	Adopted	Yes	<ul style="list-style-type: none"> • Support confident communities that are socially cohesive, creative, tolerant and considerate of the needs of all. • Create and sustain a dynamic, competitive and healthy local economy – providing the jobs of the future and the talents and skills to fill them. • Create a vibrant housing market offering a mix of high quality and affordable housing for all. • Create a Borough in which people feel safe and crime continues to fall. • Improve health and well-being – help people to live long, healthy and independent lives. • Care for our environment – deepen our understanding and respect for our surroundings. • Care for our future – give our children and young people the best start in life and the opportunity to achieve their full potential. • Improve quality of life for older people – help them live their lives in the way they choose and to support their independent and active living.
	Bradley Area Action Plan DPD	Submission	Yes	<ul style="list-style-type: none"> • Residential clearance (135 units) and new build (up to 141 units), including new affordable housing provision. • New residential development on former Riverside Mills site, resulting in the loss of employment land in a Protected Employment Area. • Increased open space provision alongside Walverden Water. • Provision of new community facilities at 'The Hub' on Leeds Road.
	South Valley Area Action Plan DPD	Issues & Options	Yes	<ul style="list-style-type: none"> • New residential development (up to 373 new build) • Refurbishment of employment space

LA District	Plan / Programme	Stage	Relevant	Options / actions to be considered for cumulative impact
Pendle (continued)				<ul style="list-style-type: none"> • Loss of employment space • Tourist development • Small windfarm • Managed woodland • Youth facilities • Improved / extended open space
	Brierfield Canal Corridor SPD	Adopted	Yes	<ul style="list-style-type: none"> • Residential clearance (138 units) and new build (102 units) • Enhanced open space provision • Redevelop former textile mill (Lob Lane Mill) for residential use
	Brierfield Railway Street Neighbourhood SPD	Issues & Options	Yes	<ul style="list-style-type: none"> • Residential and business demolition (58 units) • Residential development (around 150 new units) • Create natural/wildflower area • Increased open space • Relocation of retail units • Increased car parking
	Conservation Area Design & Development Guidance SPD	Adopted	Yes	<ul style="list-style-type: none"> • Promote good design and layout in Conservation Areas • Encourage sustainable use, sourcing and disposal of materials • Improve connectivity and access for all • Balance competing demands on the environment with the need to protect and enhance the urban and natural fabric.
	Design Principles SPD	Adopted	Yes	<ul style="list-style-type: none"> • Promote good design and layout in householder developments, new shop-fronts and advertising • Encourage energy efficient extensions • Balance competing demands on the environment with the need to protect and enhance the urban and natural fabric.

LA District	Plan / Programme	Stage	Relevant	Options / actions to be considered for cumulative impact
Bradford	Core Strategy DPD	Issues & Options (Topic Papers)	Yes	<ul style="list-style-type: none"> • Create a balanced mix of new housing • Consider redevelopment of employment land for housing • Addressing low housing demand • Addressing the needs of smaller settlements • Identify land for employment • Protection of existing employment land and premises • Support the rural economy and farm diversification. • Improve accessibility to jobs, services and facilities • Efficient movement of freight • New community facilities to be accessible by public transport • Improve access to green space and recreation facilities • Provide all sections of the community with access to retail, community and cultural facilities. • Protection and enhancement of heritage assets. • Balancing the need for regeneration and flood risk
	City Centre Area Action Plan DPD	Issues and Options	No	<ul style="list-style-type: none"> • Local impact.
	Sustainable Design Guide SPD	Adopted	No	<ul style="list-style-type: none"> • Local impact.
	Bradford City Centre Design Guide	Adopted	No	<ul style="list-style-type: none"> • Local impact.
	Open Space & Built Recreation Facilities SPD	Draft	No	<ul style="list-style-type: none"> • Local impact.
	Planning Obligations SPD	Adopted	No	<ul style="list-style-type: none"> • Local impact.

LA District	Plan / Programme	Stage	Relevant	Options / actions to be considered for cumulative impact
Bradford (continued)	City Centre Affordable Housing SPD	Adopted	No	• Local impact.
	Planning for Crime Prevention SPD	Adopted	No	• Local impact.
	Shopfront Design Guide SPD	Draft	No	• Local impact.
	Menston Housing Sites SPD	Adopted	No	• Local impact.

LA District	Plan / Programme	Stage	Relevant	Options / actions to be considered for cumulative impact
Calderdale	Unitary Development Plan	Adopted	Yes	<ul style="list-style-type: none"> • Support employment use in Primary Employment Areas • Provide 120 hectares of employment land between 2001 and 2016, 2.91 ha in Todmorden (on previously developed land) • Supports hotels, motels and other visitor accommodation in the area around Todmorden • The re-use and adaptation of rural buildings for commercial or business use is encouraged. • Safeguards better quality agricultural land • Provision will be made for 6,750 additional dwellings by 2016; 85% to be built on previously developed land. This includes 1.66 ha in Todmorden to provide approximately 68 homes. • Todmorden is identified as a town centre, capable of accommodating new retail development. • Open space, sport and recreation facilities are to be protected • Telecommunications are controlled to ensure they do not have an unacceptable effect on the surroundings • Create or extend schools in areas of need • The Plan seeks to restrain development outside the urban areas through the general extent of the Green Belt • Development in the area around Todmorden is restricted, although infill and extensions in the settlements are permitted • Development within or in the vicinity of a SSSI which is likely to have an adverse effect on it will not be permitted • Provision for a continuing supply of minerals including aggregates • A number of archaeological sites are found within the SPA

LA District	Plan / Programme	Stage	Relevant	Options / actions to be considered for cumulative impact
Calderdale (continued)	Core Strategy DPD	Refined Issues and Options	Yes	<ul style="list-style-type: none"> • Employment – Create 610 new jobs per annum. Use existing allocations, with significant levels of new office development in Halifax town centre and Brighouse/Elland. Restrain development outside urban areas • Housing numbers – Build 12,000+ new homes (net) (670 per annum) by 2026 • Retailing – Focus on Halifax with limited growth in Todmorden and Sowerby Bridge • Rural employment – limited scope for carefully managed tourism initiatives • Protection of open space • South Pennine Moors – protect and enhance the natural environment • Todmorden Curve – no support for reinstatement
	Land Allocations & Designations DPD	Call for Sites (Reg. 25)	Yes	<ul style="list-style-type: none"> • None at this time
	Provision of Affordable Housing in New Development SPD	Adopted	No	<ul style="list-style-type: none"> • Local impact
	Developer Contributions Towards Meeting Open Space, Sport and Recreation Facilities SPD	Adopted	No	<ul style="list-style-type: none"> • Local impact
	Developer Contributions Towards Meeting Education Needs SPD	Adopted	No	<ul style="list-style-type: none"> • Local impact
	Managing Housing Supply SPD	Withdrawn	No	<ul style="list-style-type: none"> • None. • Issues addressed in Core Strategy.
	Central Elland SPD	Adopted	No	<ul style="list-style-type: none"> • Local impact.

LA District	Plan / Programme	Stage	Relevant	Options / actions to be considered for cumulative impact
Calderdale (continued)	Halifax Town Centre SPD	Draft	No	• Local impact.
	Holmes Road SPD	Draft	No	• Local impact.

LA District	Plan / Programme	Stage	Relevant	Options / actions to be considered for cumulative impact
Craven	Core Strategy DPD	Preferred Options	Yes	<ul style="list-style-type: none"> • Encourage the provision of new community infrastructure – including site allocations. • Safeguard the Skipton to Colne railway line. Consider whether part of the route may help re-align sections of the A56. • All new development to use sustainable forms of construction • Renewable energy <ul style="list-style-type: none"> ○ At least 10% of all energy on business and residential new build schemes and conversions to be from CHP or on site renewables. ○ Small to medium scale renewable schemes may be supported in the less environmentally sensitive locations ○ Large scale proposals, such as wind turbines will only be supported where there is no adverse impact on communities or the environment – requires liaison with adjoining authorities. • Most development to be concentrated in Skipton, which is defined as the main service centre. Cross Hills is a local service centre. • 3,300 new homes to be built by 2021, 70% on previously developed land, 35% in Skipton and 26% in Cross Hills/Glusburn/Sutton. • At least 60% of new homes to be affordable (43% social, 17% intermediate) • 37.5 ha of new employment land to be provided. Skipton to accommodate 16.89 ha, 11.25ha in Cross Hills/Glusburn/Sutton. • Encourage high quality and sustainable tourist facilities. • New retail development encouraged within, or on the edge of, Skipton. • Outside defined settlements, the conservation, restoration and enhancement of environmental assets will be given priority.
	Site Allocations DPD	Call for Sites (Reg 25)	Yes	<ul style="list-style-type: none"> • None at this time.

LA District	Plan / Programme	Stage	Relevant	Options / actions to be considered for cumulative impact
Burnley	Burnley Local Plan	Adopted	Yes	<ul style="list-style-type: none"> • Development restricted in rural areas. • 6.77ha allocated across the Borough for mixed use development (some now developed out). • All development to be assessed in terms of noise, light, air, water, groundwater and soil pollution. • All new buildings to consider energy efficiency measures, including CHP. • 57.19 ha of land allocated for employment uses across 17 sites. • Expansion and improvement of existing employment uses. • Major retail development confined to Burnley and Padiham centres. • 9.54 ha allocated for new housing. Affordable housing will be sought on sites of 25 dwellings or more. • Comprehensive regeneration in South West Burnley, Burnley Wood, Daneshouse and Stoneyholme. • Development will not be permitted where it is likely to have an adverse impact on the South Pennines SPA. • Protected species to be protected. • Wind farms are supported provided there is no impact on nature conservation. Other forms of renewables e.g. biomass will also be supported. • Support for major sports facilities. • Support for enhancement, consolidation and improvement of existing schools. • Support improvements to existing bus and rail stations (Burnley bus station now complete). • Former Rose Grove-Padiham rail line protected for future transport use, either cycleway/footpath/bridleway, or rapid transit guided bus.

LA District	Plan / Programme	Stage	Relevant	Options / actions to be considered for cumulative impact
Burnley (continued)	Core Strategy DPD	Issues and Options	Yes	<ul style="list-style-type: none"> • None at this time. • Work on this DPD had not commenced in January 2011.
	Site Allocations DPD	Issues and Options	Yes	<ul style="list-style-type: none"> • None at this time. • Work on this DPD had not commenced in January 2011.
	General Development Control Policies DPD	-	No	<ul style="list-style-type: none"> • None at this time. • Work on this DPD had not commenced in January 2011.
	Burnley Wood and Healey Wood Area Action Plan DPD	Withdrawn	No	<ul style="list-style-type: none"> • Local impact. Urban focus, small area of change. • AAP withdrawn on 10/02/11.
	Piccadilly / Trafalgar Area Action Plan DPD	-	No	<ul style="list-style-type: none"> • Merged with South West Burnley AAP (see below).
	South West Burnley and Trinity Area Action Plan DPD	Withdrawn	No	<ul style="list-style-type: none"> • Local impact. Urban focus, small area of change. • AAP withdrawn on 10/02/11.
	Daneshouse, Duke Bar and Stoneyholme Area Action Plan DPD	Withdrawn	No	<ul style="list-style-type: none"> • Local impact. Urban focus, small area of change. • AAP withdrawn on 10/02/11.
	Padiham Area Action Plan DPD	Withdrawn	No	<ul style="list-style-type: none"> • Local impact. Urban focus, small area of change. • AAP withdrawn on 10/02/11.
	Burnley Town Centre Area Action Plan DPD	Issues and Options	No	<ul style="list-style-type: none"> • Local impact. Urban focus, small area of change. • Work on this SPD had not commenced in January 2011.
	Burnley Town Centre Public Realm Strategy SPD	Issues and Options	No	<ul style="list-style-type: none"> • Local impact. Urban focus, small area of change. • Work on this SPD had not commenced in January 2011.
	Saunder Bank Development Brief SPD	-	No	<ul style="list-style-type: none"> • Local impact. Urban focus, small area of change. • Work on this SPD had not commenced in January 2011.

LA District	Plan / Programme	Stage	Relevant	Options / actions to be considered for cumulative impact
Burnley (continued)	Burnley Wood Development Brief SPD	Issues and Option	No	<ul style="list-style-type: none"> Local impact. Urban focus, small area of change.
	South West Burnley Development Brief SPD	-	No	<ul style="list-style-type: none"> Local impact. Urban focus, small area of change. Work on this SPD had not commenced in January 2011.
	Daneshouse Development Brief SPD	-	No	<ul style="list-style-type: none"> Local impact. Urban focus, small area of change. Work on this SPD had not commenced in January 2011.
	Canalside Conservation Area Appraisal Management Plan SPD	-	No	<ul style="list-style-type: none"> Local impact. Urban focus, small area of change. Work on this SPD had not commenced in January 2011.

LA District	Plan / Programme	Stage	Relevant	Options / actions to be considered for cumulative impact
Ribble Valley	Core Strategy	Issues and Options	Yes	<ul style="list-style-type: none"> • Consider locating all new development in the main settlements of Clitheroe, Longridge and Whalley. • Some development in Wilpshire. • Businesses should be located in accessible locations. • Provide affordable housing as part of all new residential developments. • New development to be energy efficient and minimise environmental impact. • Conservation of wildlife and protected habitats. • Promote tourism and farm diversification.
	Housing & Economic Development DPD	-	Yes	<ul style="list-style-type: none"> • None at this time. • Work on this DPD had not commenced in January 2011.

LA District	Plan / Programme	Stage	Relevant	Options / actions to be considered for cumulative impact
North West	Regional Spatial Strategy	Adopted	Yes	<ul style="list-style-type: none"> • Make best use of existing resources and infrastructure. • Focus investment and sustainable development in the city of Preston and three towns of Blackburn, Burnley and Blackpool. • Local Planning Authorities to identify Key Service Centres and Local Service Centres. • No need for substantial strategic change to Green Belt . • Lancashire wide employment land requirement - districts to work together to disaggregate. Pendle has shortfall of approx 7 ha (Pendle Employment Land Review) • Burnley is a higher tier retail centre than Nelson and Colne. • Ensure there is adequate provision of health care, education, sport, recreation and cultural facilities for all the community. • Reduce vacancy rates and make best use of existing housing stock. • Pendle to supply 3,420 new dwellings by 2021, with at least 65% built on Brownfield land. • Seek a proportion of affordable housing on all development sites above relevant thresholds. • All major new developments to be located where good access to public transport already exists. • Give priority to conserving and enhancing areas, sites, features and species of international, national, regional and importance for their value to the landscape, natural and historic environment. • North West to double its installed CHP capacity by 2010. • Sets targets for the energy to be used in new development to come from decentralised and renewable sources. • Local Planning Authorities to give significant weight to the wider environmental, community and economic benefits of proposals for

LA District	Plan / Programme	Stage	Relevant	Options / actions to be considered for cumulative impact
				renewable energy schemes, although significant protection is afforded to international designations.

Appendix 4 – Operations likely to damage the special interest of a site.

Site Name:		Bowland Fells	
O LD1005542			
Ref No.		Type of Operation	
1	Cultivation, including ploughing, rotavating, harrowing, and re-seeding.		
2	Grazing. The introduction of grazing and changes in the grazing regime (including type of stock, intensity or seasonal pattern of grazing).		
3	The introduction of stock feeding and changes in stock feeding practice.		
4	The introduction of mowing or other methods of cutting vegetation and changes in the mowing or cutting regime.		
5	Application of manure, fertilisers and lime.		
6	Application of pesticides, including herbicides (weedkillers).		
7	Dumping, spreading or discharge of any materials.		
8	Burning and changes in the pattern or frequency of burning.		
9	The release into the site of any wild, feral or domestic animal*, plant or seed.		
10	The killing or removal of any wild animal*, including pest control.		
11	The destruction, displacement, removal or cutting of any plant or plant remains, including tree, shrub, herb, moss, lichen and turf.		
12	The introduction of tree and/or woodland management+ and changes in tree and/or woodland management+.		
13a	Drainage (including moor-gripping and the use of mole, tile, tunnel or other artificial drains).		
13b	Modification of the structure of watercourses (e.g. rivers, streams, springs, ditches and drains), including their banks and beds, as by re-alignment, re-grading and dredging.		
13c	Management of aquatic and bank vegetation for drainage purposes.		
14	The changing of water levels and tables and water utilisation (including irrigation, storage and abstraction from existing water bodies and through boreholes).		
15	Infilling of ditches, dykes, drains, pools or marshes.		
16a	The introduction of freshwater fishery production and/or management and changes in freshwater fishery production and management, including sporting fishing and angling.		
20	Extraction of minerals, including peat, shingle, topsoil, subsoil and spoil.		
21	Construction, removal or destruction of roads, tracks, walls, fences, hardstands, banks, ditches or other earthworks, or the laying, maintenance or removal of pipelines and cables, above or below ground.		
22	Storage of materials on the site.		
23	Erection of permanent or temporary structures, or the undertaking of engineering works, including drilling.		
24	Modification of natural or man-made features, clearance of boulders, large stones, loose rock or scree and battering, buttressing or grading rock-faces and cuttings, infilling of quarries.		
26	Use of vehicles likely to damage or disturb the flora and fauna.		
27	Recreational or other activities likely to damage the flora and fauna.		
28	The introduction of game or waterfowl management and changes in game and waterfowl management and hunting practices.		
<div>* 'animal' includes any mammal, reptile, amphibian, bird, fish or invertebrate. + including afforestation, planting, clear and selective felling, thinning, coppicing, modification of the stand or underwood, changes in species composition, cessation of management.</div>			

Site Name:	South Pennine Moors
O LD1007196	
Ref No.	Type of Operation
1	Cultivation, including ploughing, rotavating, harrowing, and re-seeding.
2	Grazing. The introduction of grazing and changes in the grazing regime (including type of stock, intensity or seasonal pattern of grazing).
3	The introduction of stock feeding and changes in stock feeding practice.
4	The introduction of mowing or other methods of cutting vegetation and changes in the mowing or cutting regime (including hay making to silage).
5	Application of manure, fertilisers and lime.
6	Application of pesticides, including herbicides (weedkillers).
7	Dumping, spreading or discharge of any materials.
8	Burning and changes in the pattern or frequency of burning.
9	The release into the site of any wild, feral or domestic animal*, plant or seed.
10	The killing or removal of any wild animal*, including pest control.
11	The destruction, displacement, removal or cutting of any plant or plant remains, including tree, shrub, herb, moss, lichen and turf.
12	The introduction of tree and/or woodland management+ and changes in tree and/or woodland management+.
13a	Drainage (including moor-gripping and the use of mole, tile, tunnel or other artificial drains).
13b	Modification of the structure of watercourses (eg streams, springs, ditches, dykes and drains), including their banks and beds, as by re-alignment, re-grading and dredging.
13c	Management of aquatic and bank vegetation for drainage purposes.
14	The changing of water levels and tables and water utilisation (including irrigation, storage and abstraction from existing water bodies and through boreholes).
15	Infilling of ditches, dykes, drains, pools or marshes.
16a	The introduction of freshwater fishery production and/or management and changes in freshwater fishery production and management, including sporting fishing and angling.
20	Extraction of minerals, including peat, topsoil and subsoil.
21	Construction, removal or destruction of roads, tracks, walls, fences, hardstands, banks, ditches or other earthworks, or the laying, maintenance or removal of pipelines and cables, above or below ground.
22	Storage of materials on the site.
23	Erection of permanent or temporary structures, or the undertaking of engineering works, including drilling.
24	Modification of natural or man-made features, clearance of boulders, large stones, loose rock or scree and battering, buttressing or grading rock-faces, infilling of pits and quarries.
26	Use of vehicles likely to damage or disturb the vegetation or breeding birds.
27	Recreational or educational activities likely to damage the vegetation or breeding birds.
28	The introduction of game or waterfowl management and changes in game and waterfowl management and hunting practices.
<p>* 'animal' includes any mammal, reptile, amphibian, bird, fish or invertebrate. + including afforestation, planting, clear and selective felling, thinning, coppicing, modification of the stand or underwood, changes in species composition, cessation of management.</p>	

Habitat Regulations Assessment Screening Report

53

Site Name:		Ribble Estuary
O LD1004299		
Ref No.	Type of Operation	
1	Cultivation, including ploughing, rotavating, harrowing, and re-seeding.	
2	The introduction of grazing and changes in the grazing regime (including type of stock, intensity or seasonal pattern of grazing and cessation of grazing).	
3	The introduction of stock feeding and changes in stock feeding practice.	
4	The introduction of mowing or other methods of cutting vegetation and changes in the mowing or cutting regime (including hay making to silage and cessation).	
5	Application of manure, fertilisers and lime.	
6	Application of pesticides, including herbicides (weedkillers).	
7	Dumping, spreading or discharge of any materials.	
8	Burning and changes in the pattern or frequency of burning.	
9	The release into the site of any wild, feral or domestic animal*, plant or seed.	
10	The killing or removal of any wild animal*.	
11	The destruction, displacement, removal or cutting of any plant or plant remains, including shrub, herb, hedge, dead or decaying wood, moss, lichen, fungus, leaf-mould and turf.	
12	The introduction of tree and/or woodland management+ and changes in tree and/or woodland management+.	
13a	Drainage (including the use of mole, tile, tunnel or other artificial drains).	
13b	Modification of the structure of watercourses (eg rivers, streams, springs, ditches, dykes and drains), including their banks and beds, as by re-alignment, re-grading and dredging.	
13c	Management of aquatic and bank vegetation for drainage purposes.	
14	The changing of water levels and tables and water utilisation (including irrigation, storage and abstraction from existing water bodies and through boreholes).	
15	Infilling of ditches, dykes, drains, ponds, pools, marshes or pits.	
16a	The introduction of freshwater fishery production and/or management and changes in freshwater fishery production and management, including sporting fishing and angling.	
16b	Changes in coastal fishing practice or fisheries management and seafood or marine life collection, including the use of traps or fish cages.	
17	Reclamation of land from sea, estuary or marsh.	
18	Bait digging in inter-tidal areas.	
19	Erection of sea defences or coast protection works, including cliff or landslip drainage or stabilisation measures.	
20	Extraction of minerals, including shingle, sand and gravel, topsoil and subsoil.	
21	Construction, removal or destruction of roads, tracks, walls, fences, hardstands, banks, ditches or other earthworks, or the laying, maintenance or removal of pipelines and cables, above or below ground.	
22	Storage of materials on the site.	
23	Erection of permanent or temporary structures, or the undertaking of engineering works, including drilling.	
24	Modification of natural or man-made features including coastal embankments and training walls.	
25	Removal of geological specimens, including rock samples, minerals and fossils.	
26	Use of vehicles or craft likely to damage or disturb features of interest.	

Habitat Regulations Assessment Screening Report

54

27	Recreational or other activities likely to damage the soil, flora and fauna.
28	The introduction of game or waterfowl management and changes in game and waterfowl management and hunting practices.
<small>* 'animal' includes any mammal, reptile, amphibian, bird, fish or invertebrate. + including afforestation, planting, clear and selective felling, thinning, coppicing, modification of the stand or underwood, changes in species composition, cessation of management.</small>	

Site Name:	North Pennine Moors Comprising West Nidderdale, Barden and Blubberhouses Moors, North Yorkshire
O LD2000321	
Ref No.	Type of Operation
1	Cultivation and other ground disturbance (including repeated vehicle rutting of open land).
2	Grazing, including changes in the grazing regime.
3	Stock feeding.
5	Application of manure, slurry, fertilisers, lime and pesticides, including herbicides (weedkillers).
8	The cutting or burning of vegetation.
10	The killing or removal of any wild animal except those game and pest species which may be legally taken.
12	Tree and woodland planting or management.
13	Drainage (including moor-gripping and any other modification of the water table).
20	Extraction of minerals, including peat and soil.
21	Construction of any structure (including tracks, fences), but excluding the maintenance of existing structures.
27	Recreational events within the bird breeding season (March – July inclusive).

Site Name:	North Pennine Dales Meadows Bell Sykes Meadows, Lancashire
O LD1004299	
Ref No.	Type of Operation
15	Infilling or digging of ditches, dykes, drains, ponds, pools, marshes or pits.
20	Extraction of minerals, including peat, hard rock, topsoil, subsoil and spoil.
21	Destruction, construction, removal, re-routing or re-grading of roads, tracks, walls, fences, hardstands, banks, ditches or other earthworks, including soil or soft rock exposures or the laying, maintenance or removal of pipelines and cables, above or below ground.
22	Storage of material.
23	Erection of permanent or temporary structures, or the undertaking of engineering works, including drilling.
26	Use of vehicles.
27	Recreational activities.
28	Introduction of game management and hunting practices and alterations to game and management and hunting practices.

Habitat Regulations Assessment Screening Report

55

Site Name:		North Pennine Dales Meadows Langcliff Cross Meadow
O LD1003896		
Ref No.	Type of Operation	
1	Cultivation, including ploughing, rotavating, harrowing, and re-seeding.	
2	The introduction of grazing and changes in the grazing regime (including type of stock, intensity or seasonal pattern of grazing and cessation of grazing).	
3	The introduction of stock feeding and changes in stock feeding practice.	
4	The introduction of mowing or other methods of cutting vegetation and changes in the mowing or cutting regime (including hay making to silage and cessation).	
5	Application of manure, fertilisers and lime.	
6	Application of pesticides, including herbicides (weedkillers).	
7	Dumping, spreading or discharge of any materials.	
8	Burning and changes in the pattern or frequency of burning.	
9	The release into the site of any wild, feral or domestic animal*, plant or seed.	
10	The killing or removal of any wild animal*, including pest control.	
11	The destruction, displacement, removal or cutting of any plant or plant remains, including tree, herb or turf.	
12	The introduction of tree and/or woodland management+ and changes in tree and/or woodland management+.	
13a	Drainage (including the use of mole, tile, tunnel or other artificial drains).	
14	The changing of water levels and tables and water utilisation (including irrigation, storage and abstraction from existing water bodies and through boreholes).	
15	Infilling of marshes.	
20	Extraction of minerals, including topsoil and subsoil.	
21	Construction, removal or destruction of roads, tracks, walls, fences, hardstands, banks, ditches or other earthworks, or the laying, maintenance or removal of pipelines and cables, above or below ground.	
22	Storage of materials on the site.	
23	Erection of permanent or temporary structures, or the undertaking of engineering works, including drilling.	
26	Use of vehicles likely to damage or disturb the flora.	
27	Recreational or other activities likely to damage the flora.	
28	The introduction of game or waterfowl management and changes in game and waterfowl management and hunting practices.	
<div>* 'animal' includes any mammal, reptile, amphibian, bird, fish or invertebrate. + including afforestation, planting, clear and selective felling, thinning, coppicing, modification of the stand or underwood, changes in species composition, cessation of management.</div>		

Habitat Regulations Assessment Screening Report

56

Site Name:		North Pennine Dales Meadows Myttons Meadows
O LD1002614		
Ref No.	Type of Operation	
1	Cultivation, including ploughing, rotavating, harrowing, and re-seeding.	
2	The introduction of grazing and changes in the grazing regime (including type of stock, intensity or seasonal pattern of grazing and cessation of grazing).	
3	The introduction of stock feeding and changes in stock feeding practice.	
4	The introduction of mowing or other methods of cutting vegetation and changes in the mowing or cutting regime (including hay making to silage and cessation).	
5	Application of manure, fertilisers and lime.	
6	Application of pesticides, including herbicides (weedkillers).	
7	Dumping, spreading or discharge of any materials.	
8	Burning and changes in the pattern or frequency of burning.	
9	The release into the site of any wild, feral or domestic animal*, plant or seed.	
10	The killing or removal of any wild animal*, including pest control.	
11	The destruction, displacement, removal or cutting of any plant or plant remains, including tree, shrub, herb, hedge, moss and turf.	
12	The introduction of tree and/or woodland management+ and changes in tree and/or woodland management+.	
13a	Drainage (including the use of mole, tile, tunnel or other artificial drains).	
13b	Modification of the structure of watercourses (eg streams, springs, ditches), including their banks and beds, as by re-alignment, re-grading and dredging.	
13c	Management of aquatic and bank vegetation for drainage purposes.	
14	The changing of water levels and tables and water utilisation (including irrigation, storage and abstraction from existing water bodies and through boreholes).	
15	Infilling of ditches or marshes.	
20	Extraction of minerals, including topsoil and subsoil.	
21	Construction, removal or destruction of roads, tracks, walls, fences, hardstands, banks, ditches or other earthworks, or the laying, maintenance or removal of pipelines and cables, above or below ground.	
22	Storage of materials on the site.	
23	Erection of permanent or temporary structures, or the undertaking of engineering works, including drilling.	
26	Use of vehicles likely to damage or disturb features of interest.	
27	Recreational, educational or other activities likely to damage features of interest.	
28	The introduction of game or waterfowl management and changes in game and waterfowl management and hunting practices.	
<div>* 'animal' includes any mammal, reptile, amphibian, bird, fish or invertebrate. + including afforestation, planting, clear and selective felling, thinning, coppicing, modification of the stand or underwood, changes in species composition, cessation of management.</div>		